

2653 N. Clark Street

CHICAGO, IL 60614 | LAKEVIEW

For Lease

RETAIL SPACE



- ▶ Up to ±4,912 SF available:
 - Retail 1 - 2,682 SF - Black Iron Available (can be demised)
 - Retail 2 - 667 SF
 - Retail 3 - 1,340 SF - Black Iron Available
- ▶ Corner location just 1 block south of the highly trafficked Clark / Broadway / Diversey intersection
- ▶ Heavy pedestrian traffic along Clark Street
- ▶ Less than ½ mile from the Diversey CTA Brown & Purple Line 'L' station (1.7M annual riders) and the North Pond Nature Sanctuary in Lincoln Park
- ▶ Nearby retailers include Target, CVS, Trader Joe's, Nando's Peri Peri, Banana Republic, Express, Urban Outfitters, Stan's Donuts and more

DEMOGRAPHIC SUMMARY

	.25 Mi	.50 Mi	1 Mi
Estimated Population	11,923	34,735	89,170
Adj. Daytime Population	7,833	23,901	64,876
Estimated Households	7,905	21,992	50,493
Estimated Average Household Income	\$120,551	\$136,562	\$159,357

DOUG RENNER

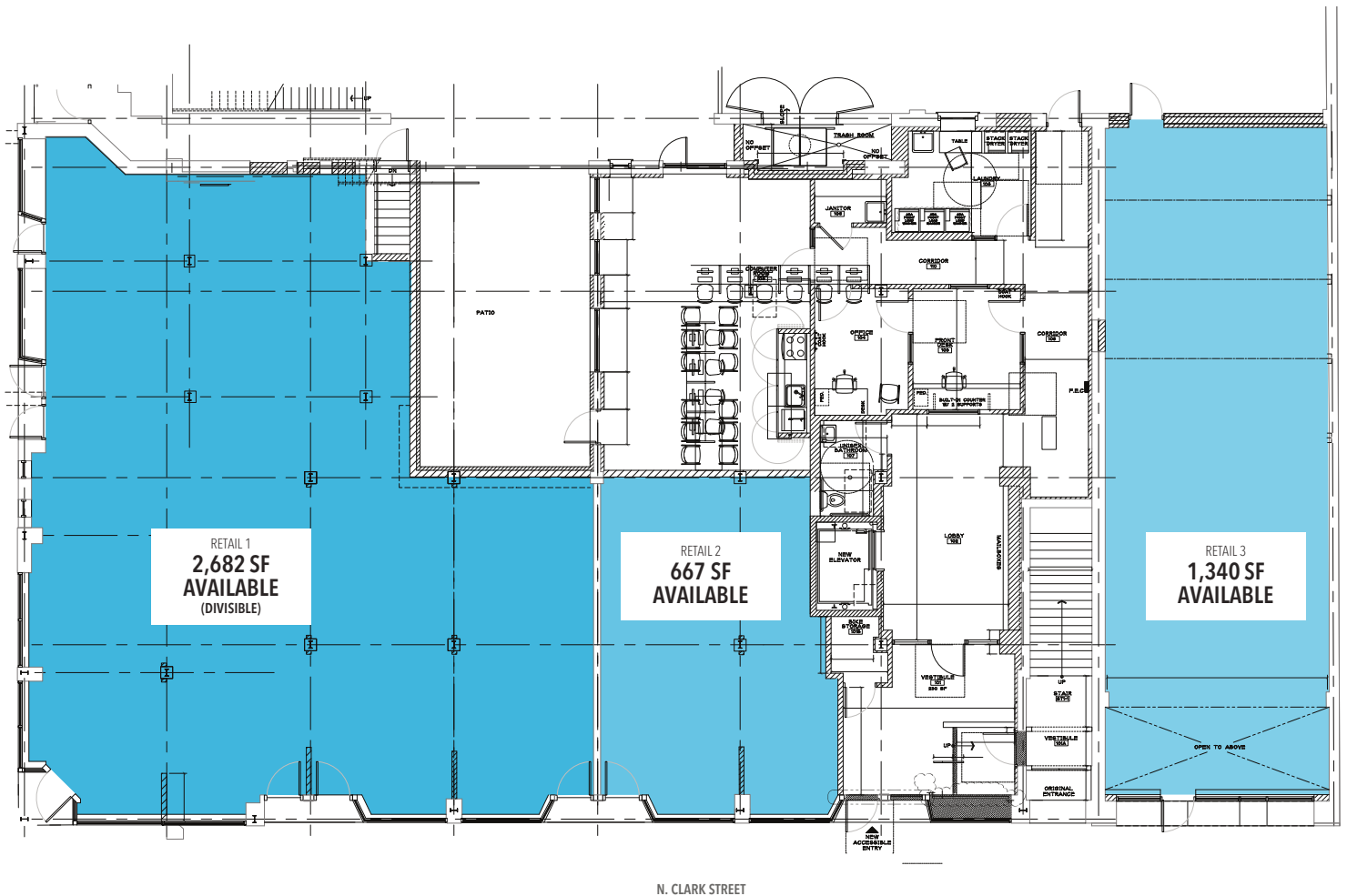
doug.renner@baumrealty.com

312.275.3137



© 2023 All information supplied is from sources deemed reliable and is furnished subject to errors, omissions, modifications, removal of the listing from sale or lease, and to any listing conditions, including the rates and manner of payment of commissions for particular offerings, the terms of which are available to principals or duly licensed brokers. Any square footage dimensions set forth are approximate.

SITE PLAN



DOUG RENNER

doug.renner@baumrealty.com

312.275.3137



© 2023 All information supplied is from sources deemed reliable and is furnished subject to errors, omissions, modifications, removal of the listing from sale or lease, and to any listing conditions, including the rates and manner of payment of commissions for particular offerings, the terms of which are available to principals or duly licensed brokers. Any square footage dimensions set forth are approximate.

2653 N. Clark Street
Chicago, IL

