

100 NORTH LASALLE CHICAGO

RETAIL SPACE AVAILABLE IN PRIME LOOP LOCATION



100 NORTH LASALLE

RETAIL SPACE AVAILABLE IN PRIME LOOP LOCATION



- ▶ **Prime Loop location**; directly across the street from City Hall and The County Building
- ▶ **872 SF ground floor & 8,008 SF second floor retail** space available for lease
- ▶ Street ground floor on the Washington Boulevard side of the property provides access to 2nd floor space above Qdoba and Pret A Manger
- ▶ Over 400 employees in the building with 164,000+ SF office space
- ▶ Neighboring retailers include Qdoba, Pret a Manger, Einstein Bagels, Dunkin' Donuts, Almagamated Bank, Hanna's Bretzel, Zoup and Luke's Lobster

DEMOGRAPHIC SUMMARY

	.25 MILE	.50 MILE	1 MILE
Estimated Population (2014)	9,573	34,008	85,265
Estimated Average Household Income (2014)	\$162,142	\$148,565	\$139,389
Adj. Daytime Demographics Age 16 Years or Over	33,926	129,695	400,220

BUILDING INFORMATION:

Size: 26 floors
 Year Built: 1984
 Renovated: 1997, 2013
 Retail Co-tenants: Qdoba, Pret A Manger

For more information contact:

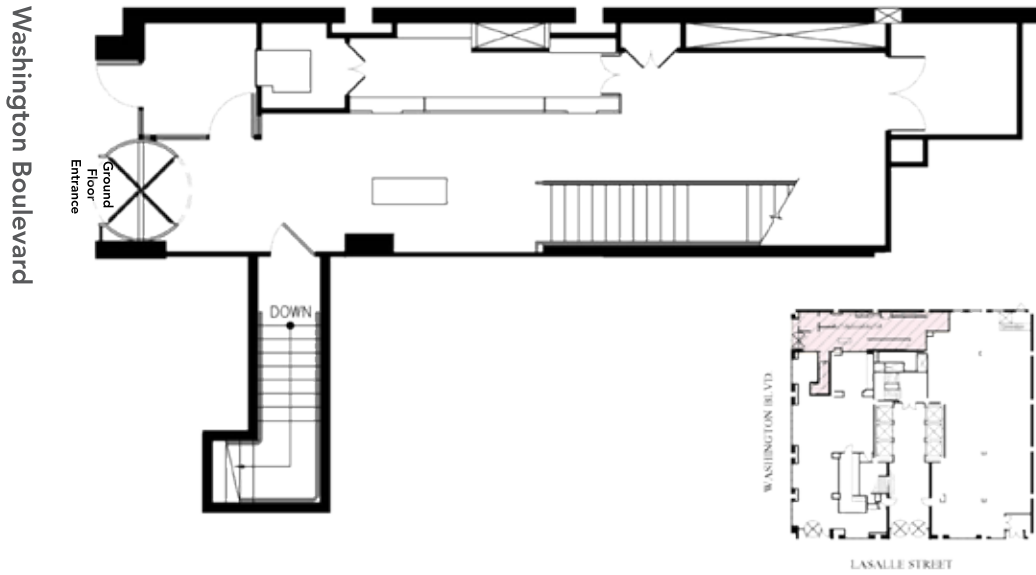
DOUG RENNER 312.275.3137 doug.renner@baumrealty.com
ALLEN JOFFE 312.275.3120 allen@baumrealty.com



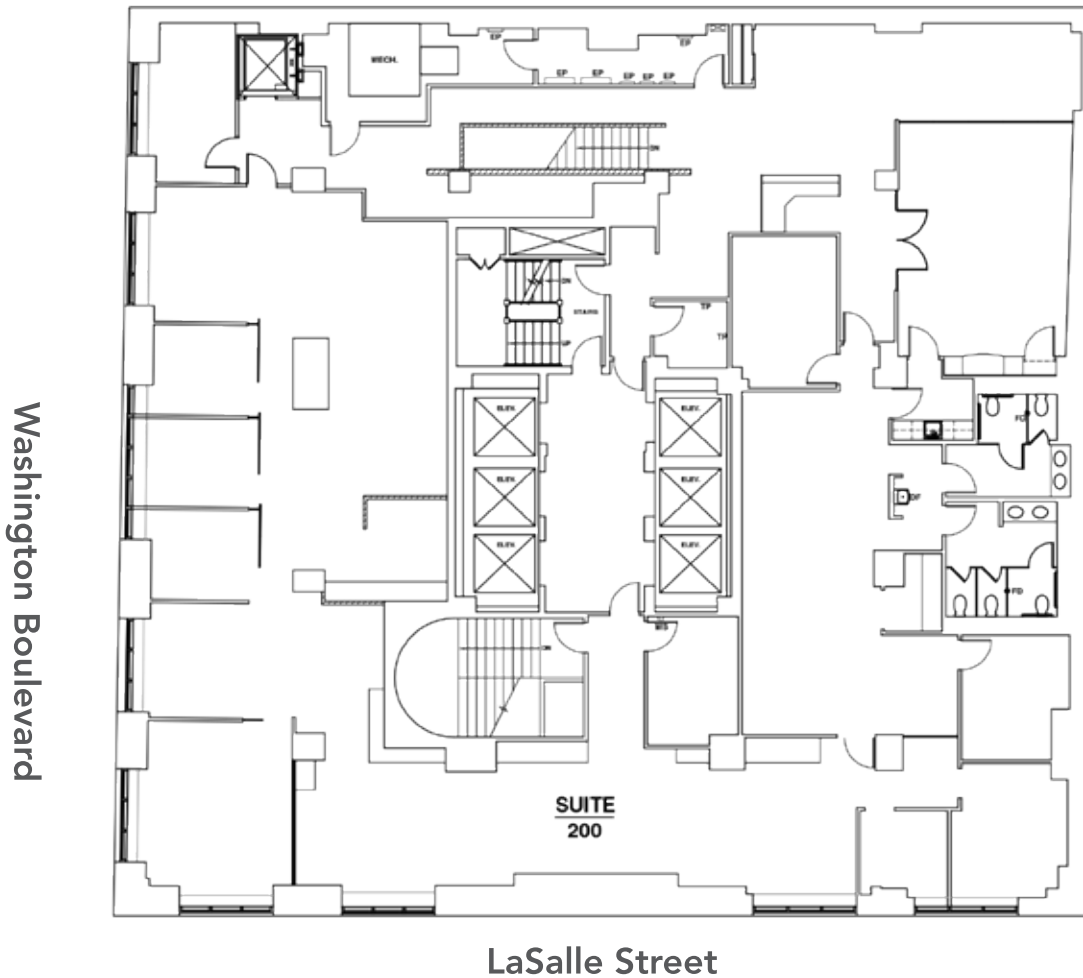
100 NORTH LASALLE

SITE PLAN

GROUND FLOOR



SECOND FLOOR



For more information contact:

DOUG RENNER 312.275.3137

doug.renner@baumrealty.com

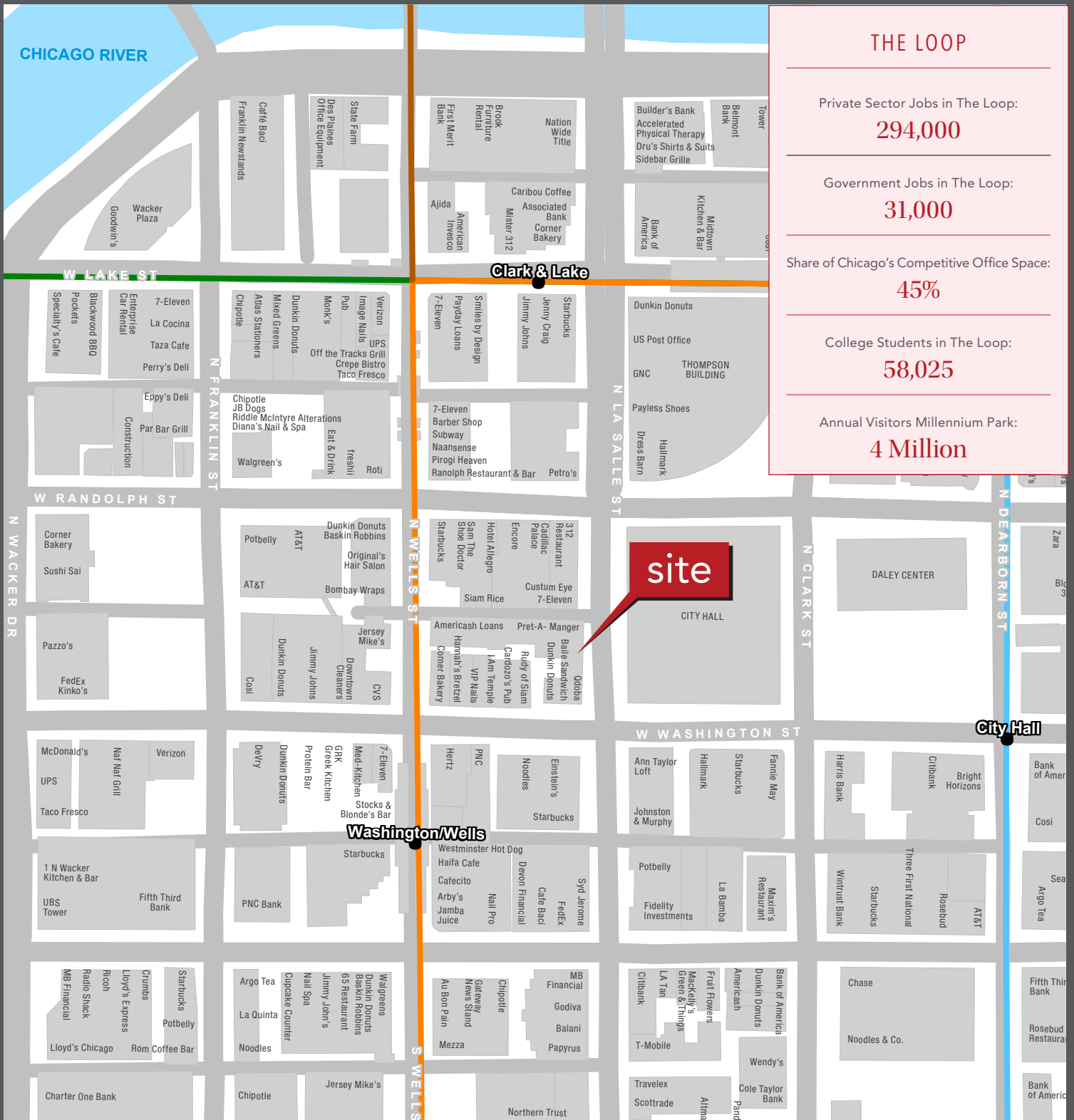
ALLEN JOFFE 312.275.3120

allen@baumrealty.com



100 NORTH LASALLE

RETAIL SPACE AVAILABLE IN PRIME LOOP LOCATION



THE LOOP

Private Sector Jobs in The Loop:

294,000

Government Jobs in The Loop:

31,000

Share of Chicago's Competitive Office Space:

45%

College Students in The Loop:

58,025

Annual Visitors Millennium Park:

4 Million

For more information contact:

DOUG RENNER 312.275.3137 doug.renner@baumrealty.com

ALLEN JOFFE 312.275.3120 allen@baumrealty.com

©2016 All information supplied is from sources deemed reliable and is furnished subject to errors, omissions, modifications, removal of the listing from sale or lease, and to any listing conditions, including the rates and manner of payment of commissions for particular offerings, the terms of which are available to principals or duly licensed brokers. This information may include estimates and projections with respect to future events, and these future events may or may not actually occur. Such estimates and projections reflect various assumptions concerning anticipated results. While we believe these assumptions are reasonable, there can be no assurance that any of these estimates and projections will prove to have been correct. Therefore, actual results may vary materially from these forward-thinking estimates and projections. Any square footage dimensions set forth are approximate.

