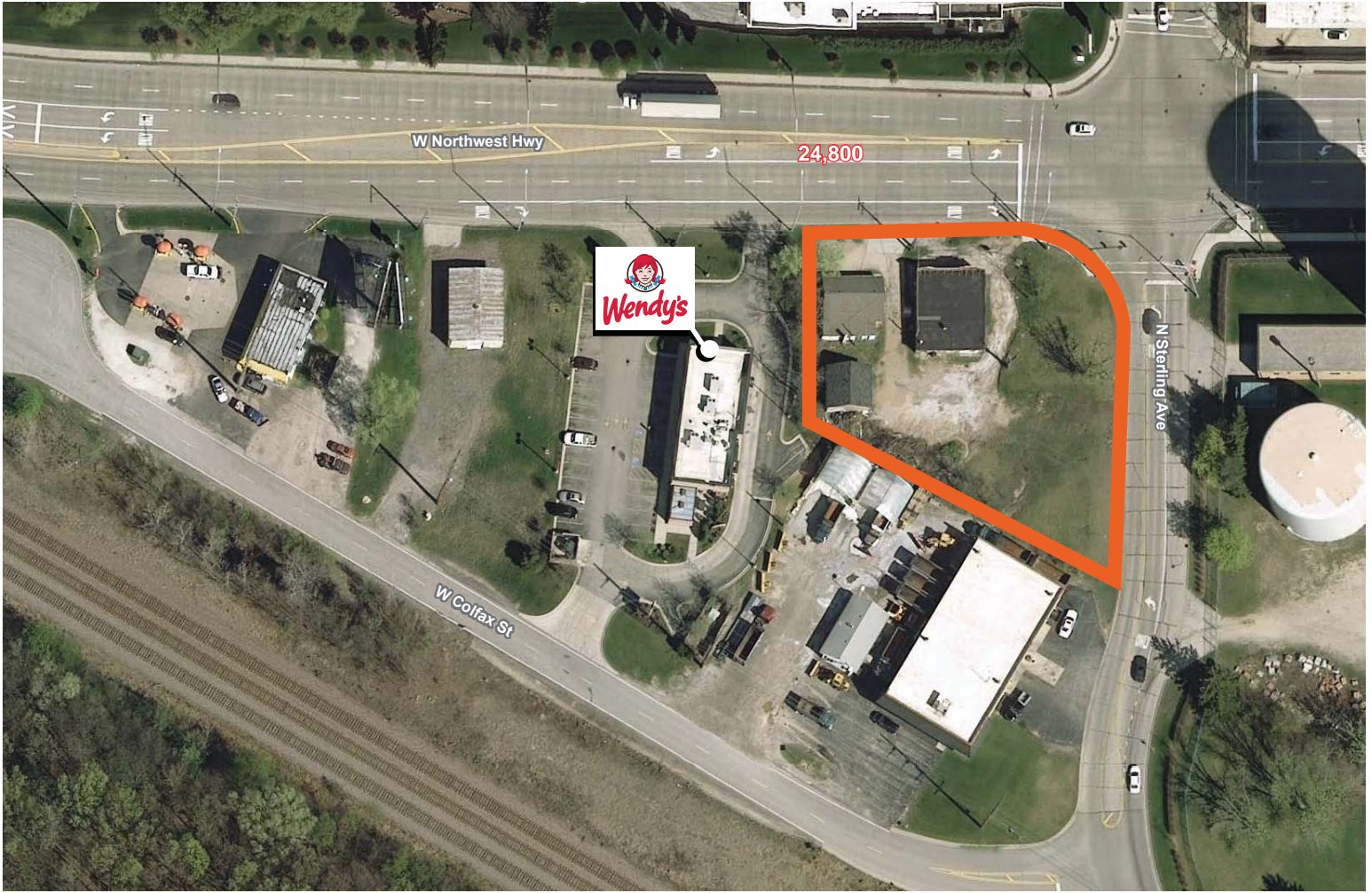


For Sale

Asking Price: \$300,000

1201 W. Northwest Highway

Palatine, IL 60067



- ±28,000 SF for sale
- Corner location positioned at the stoplight intersection of N. Sterling Avenue & W. Northwest Highway
- Over 150,000 consumers within 5 miles
- 24,800 vehicles per day on W. Northwest Highway
- Located next to Wendy's and across from office park, large apartment complex and YMCA

DEMOGRAPHIC SUMMARY

	RADIUS		
	1 MILE	3 MILES	5 MILES
AVERAGE HHI	\$103,563	\$124,841	\$120,258
DAYTIME POPULATION	5,024	46,473	153,875
RESIDENTIAL POPULATION	9,525	72,621	192,612

TRAFFIC COUNTS

W. NORTHWEST HIGHWAY	24,800 VPD
----------------------	------------

Trevor Jack
312.275.3128
trevor@baumrealty.com



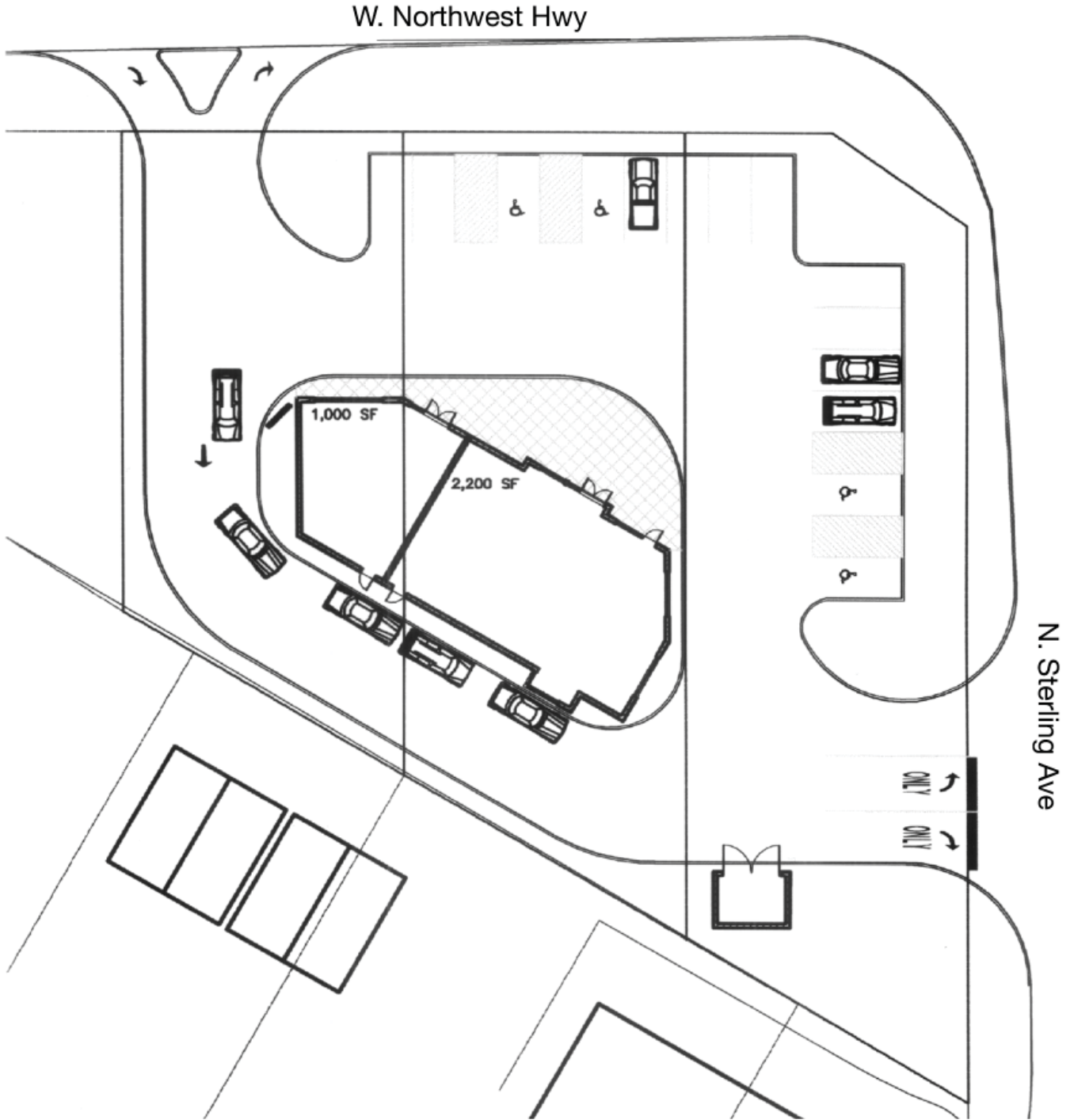
For Sale

Asking Price: \$300,000

1201 W. Northwest Highway

Palatine, IL 60067

PROPOSED SITE PLAN



Trevor Jack
312.275.3128
trevor@baumrealty.com





Baum Realty Group
1030 W. Chicago Ave.
Chicago, IL 60642
312.666.3000
www.baumrealty.com

1201 W. Northwest Hwy. Palatine, IL

