

For Lease

Retail Space

1400 N. Milwaukee Avenue

Chicago, IL 60622 | Wicker Park



- ±2,602 SF available
- Outdoor seating potential
- Existing, large blade signage
- 10 retail parking spaces located under the 'L'
- Located along the magnetic Milwaukee Avenue corridor attracting national tenants such as American Apparel, Steve Madden, Levi's, Urban Outfitters, and Crossroads Trading Co.
- Within walking distance to the Damen and Division Blue Line CTA stops
- 35,000 weekly pedestrians and 10,400 VPD along Milwaukee Avenue

- Neighboring tenants include Walgreens, Kanela, 7-Eleven and Cumin
- Located in Wicker Park, which was 4th in Forbes' 'hippest' neighborhood list in 2015

DEMOGRAPHIC SUMMARY

	RADIUS		
	.25 MILES	.5 MILES	1 MILE
AVERAGE HHI	\$139,726	\$129,565	\$118,970
DAYTIME POPULATION	3,298	10,958	36,786
RESIDENTIAL POPULATION	4,817	19,308	56,996

Trevor Jack
312.275.3128
trevor@baumrealty.com

Mark Fredericks
312.275.3109
mark@baumrealty.com

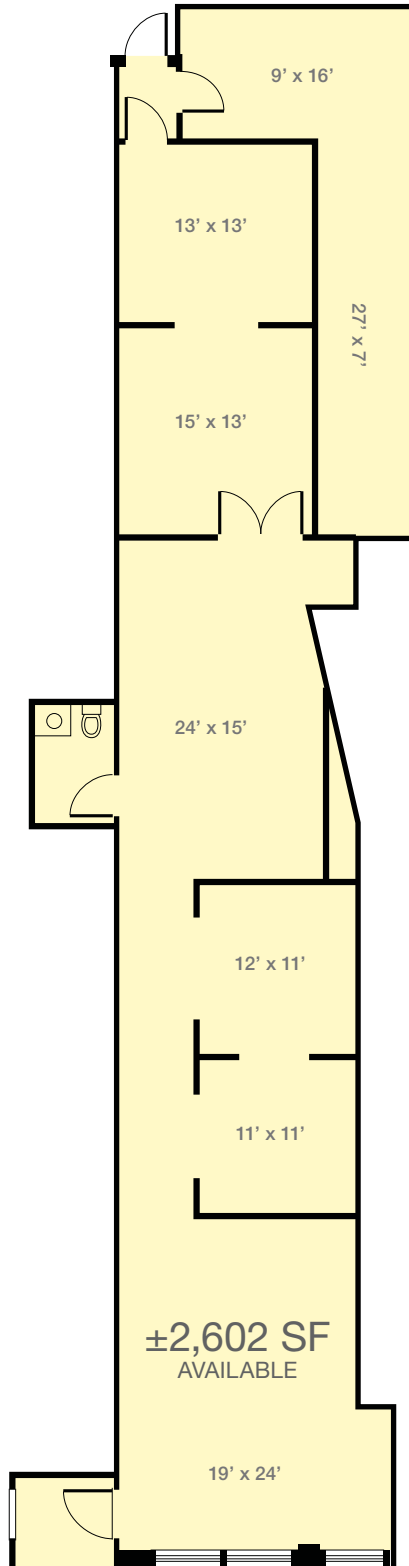


For Lease

Retail Space

1400 N. Milwaukee Avenue

Chicago, IL 60622 | Wicker Park



N MILWAUKEE AVENUE



Trevor Jack
312.275.3128
trevor@baumrealty.com

Mark Fredericks
312.275.3109
mark@baumrealty.com



