

1820 W. Hubbard Street

CHICAGO, IL 60622 | KINZIE CORRIDOR LOFT BUILDING

For Lease

2ND FLOOR CREATIVE OFFICE



BUILDING INFORMATION

LEASE RATE: \$18 Modified Gross

AVAILABLE SPACE: 2,184 SF

BUILDING SIZE: 115,580 SF

TAXES & OPEX \$2.58 / SF

ZONING: PMD-4 - Office / Industrial

CEILING HEIGHT: 12'

LOADING: Common loading area

SITE HIGHLIGHTS

- ▶ 2,184 SF rarely available 2nd floor creative office space
- ▶ Recent build-out includes new flooring, two (2) glass partitioned offices, conference room and kitchenette
- ▶ Abundant natural light
- ▶ Exposed brick
- ▶ Recently updated brick and timber loft building with a solid mix of tenants, and a youthful vibe
- ▶ Close to Grand Avenue and Ashland Avenue transportation arteries

ARI TOPPER, CFA
ari@baumrealty.com
312.275.3113



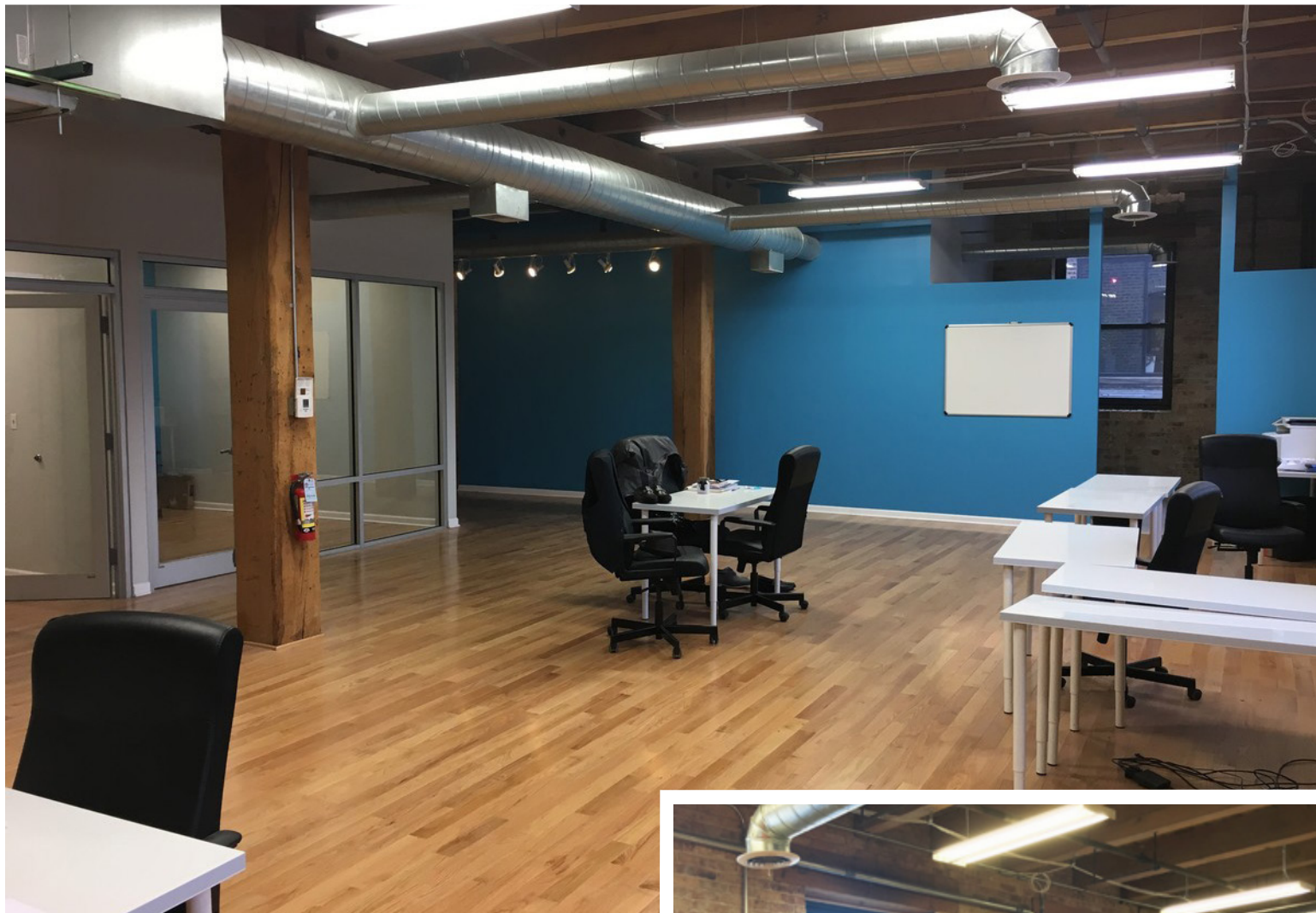
© 2018 All information supplied is from sources deemed reliable and is furnished subject to errors, omissions, modifications, removal of the listing from sale or lease, and to any listing conditions, including the rates and manner of payment of commissions for particular offerings, the terms of which are available to principals or duly licensed brokers. This information may include estimates and projections with respect to future events, and these future events may or may not actually occur. Such estimates and projections reflect various assumptions concerning anticipated results. While we believe these assumptions are reasonable, there can be no assurance that any of these estimates and projections will prove to have been correct. Therefore, actual results may vary materially from these forward-thinking estimates and projections. Any square footage dimensions set forth are approximate.

1820 W. Hubbard Street

CHICAGO, IL 60622 | KINZIE CORRIDOR LOFT BUILDING

For Lease

2ND FLOOR CREATIVE OFFICE



ARI TOPPER, CFA
ari@baumrealty.com
312.275.3113



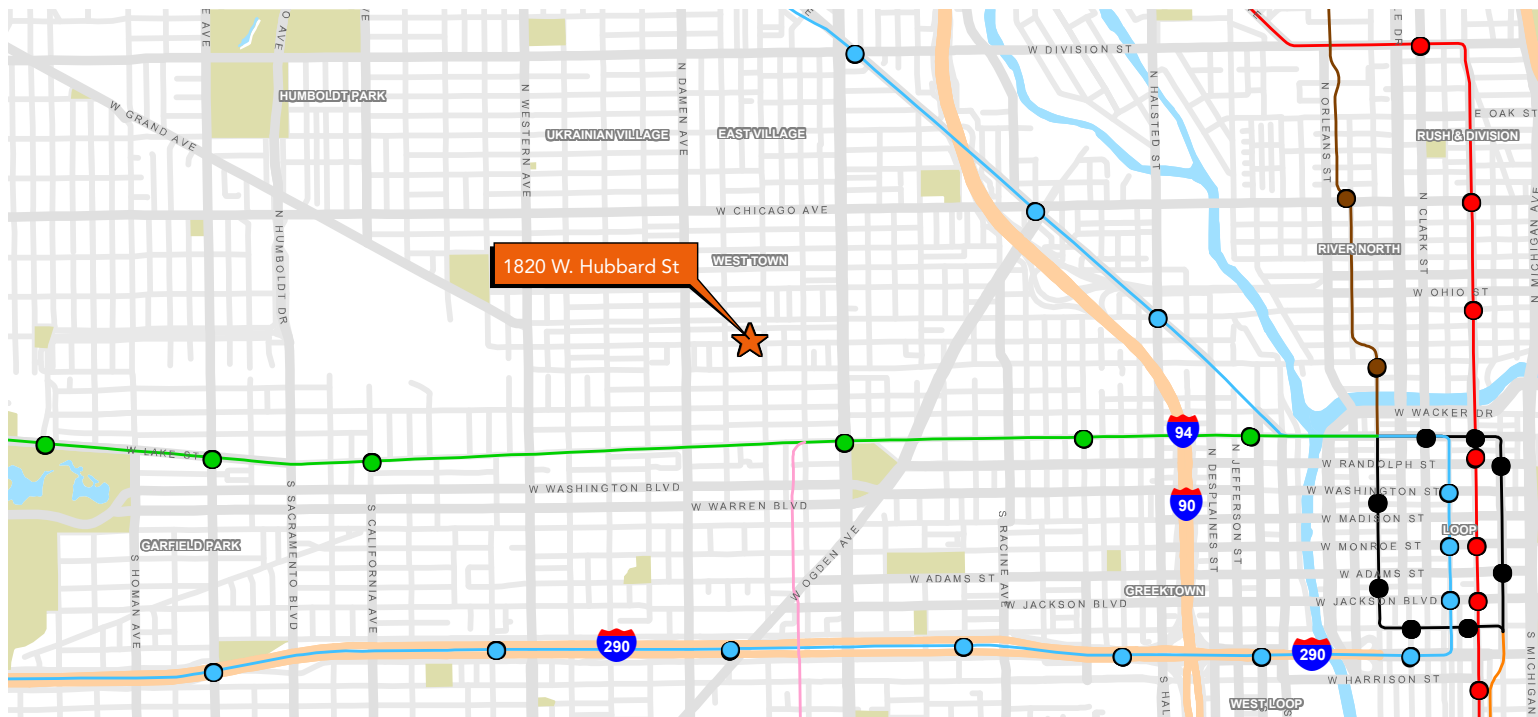
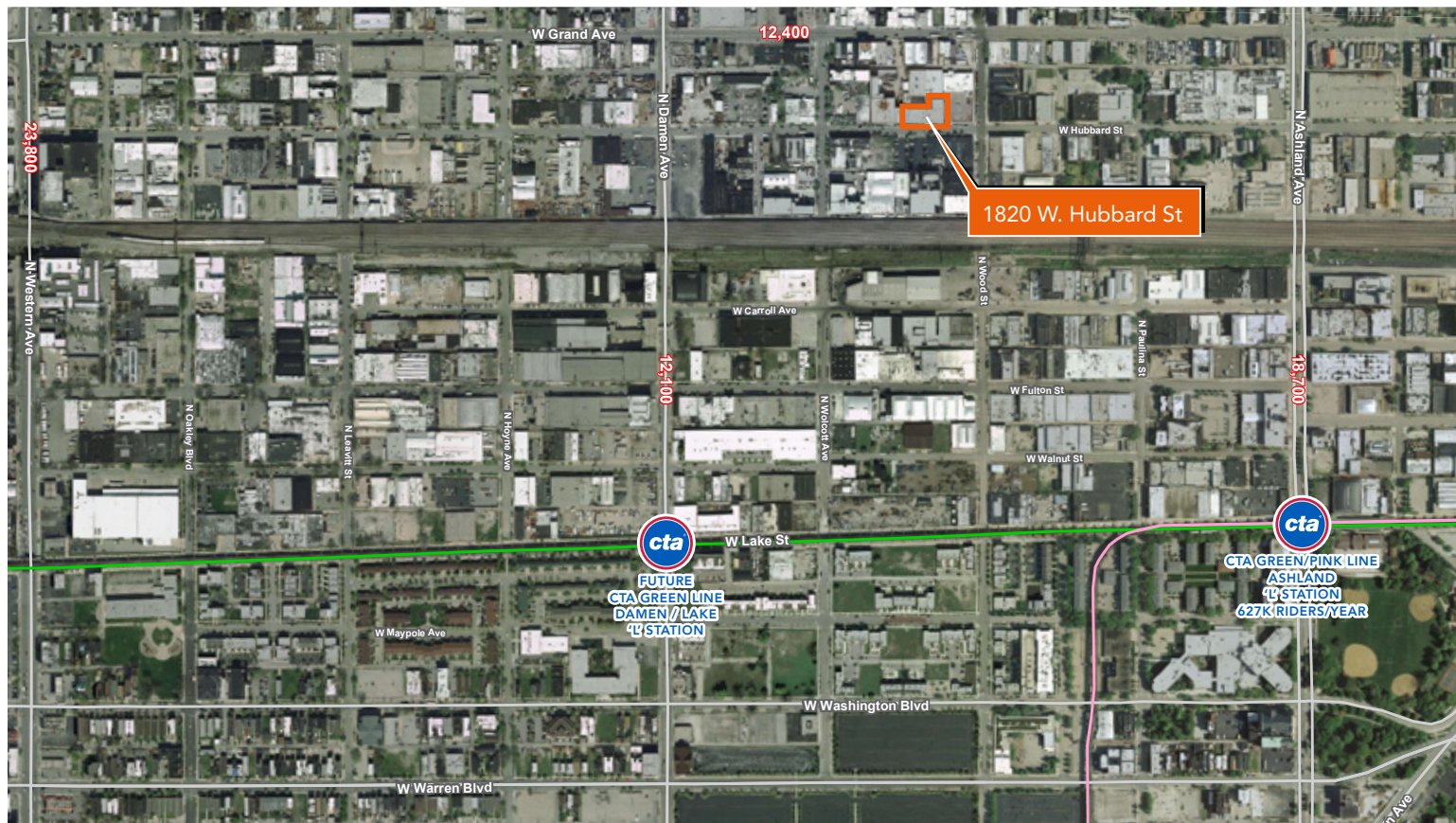
© 2018 All information supplied is from sources deemed reliable and is furnished subject to errors, omissions, modifications, removal of the listing from sale or lease, and to any listing conditions, including the rates and manner of payment of commissions for particular offerings, the terms of which are available to principals or duly licensed brokers. This information may include estimates and projections with respect to future events, and these future events may or may not actually occur. Such estimates and projections reflect various assumptions concerning anticipated results. While we believe these assumptions are reasonable, there can be no assurance that any of these estimates and projections will prove to have been correct. Therefore, actual results may vary materially from these forward-thinking estimates and projections. Any square footage dimensions set forth are approximate.

1820 W. Hubbard Street

CHICAGO, IL 60622 | KINZIE CORRIDOR LOFT BUILDING

For Lease

2ND FLOOR CREATIVE OFFICE



ARI TOPPER, CFA
ari@baumrealty.com
312.275.3113



© 2018 All information supplied is from sources deemed reliable and is furnished subject to errors, omissions, modifications, removal of the listing from sale or lease, and to any listing conditions, including the rates and manner of payment of commissions for particular offerings, the terms of which are available to principals or duly licensed brokers. This information may include estimates and projections with respect to future events, and these future events may or may not actually occur. Such estimates and projections reflect various assumptions concerning anticipated results. While we believe these assumptions are reasonable, there can be no assurance that any of these estimates and projections will prove to have been correct. Therefore, actual results may vary materially from these forward-thinking estimates and projections. Any square footage dimensions set forth are approximate.