

1909-1911 Central Street

Evanston, IL 60201 |

For Lease

Retail Property



- ▶ 1909 Central: ±1,213 SF available
- ▶ 1911 Central: ±1,050 SF available
- ▶ Large storefront windows with great natural light
- ▶ Frontage on Central Street
- ▶ Basement space included at no extra cost
- ▶ Across the street Central Avenue Metra Station
- ▶ Area tenants include Coast Sushi, The Spice Room, United States Postal Service, Chase Bank, Starbucks, JC Licht, Evanston Art Center, Dunkin', and more

DEMOGRAPHICS

	.25 MILE	.5 MILE	1 MILE
Estimated Population	1,666	5,546	19,866
Adj. Daytime Demographics	1,130	3,867	16,726
Estimated Households	628	2,056	7,284
Estimated Average Household Income	\$235,362	\$198,023	\$206,484

CHUCK WHITLOCK

312.275.3133
chuck@baumrealty.com



© 2018 All information supplied is from sources deemed reliable and is furnished subject to errors, omissions, modifications, removal of the listing from sale or lease, and to any listing conditions, including the rates and manner of payment of commissions for particular offerings, the terms of which are available to principals or duly licensed brokers. Any square footage dimensions set forth are approximate.

1909-1911 Central Street

Evanston, IL 60201 |

For Lease

Retail Property



CHUCK WHITLOCK
312.275.3133
chuck@baumrealty.com



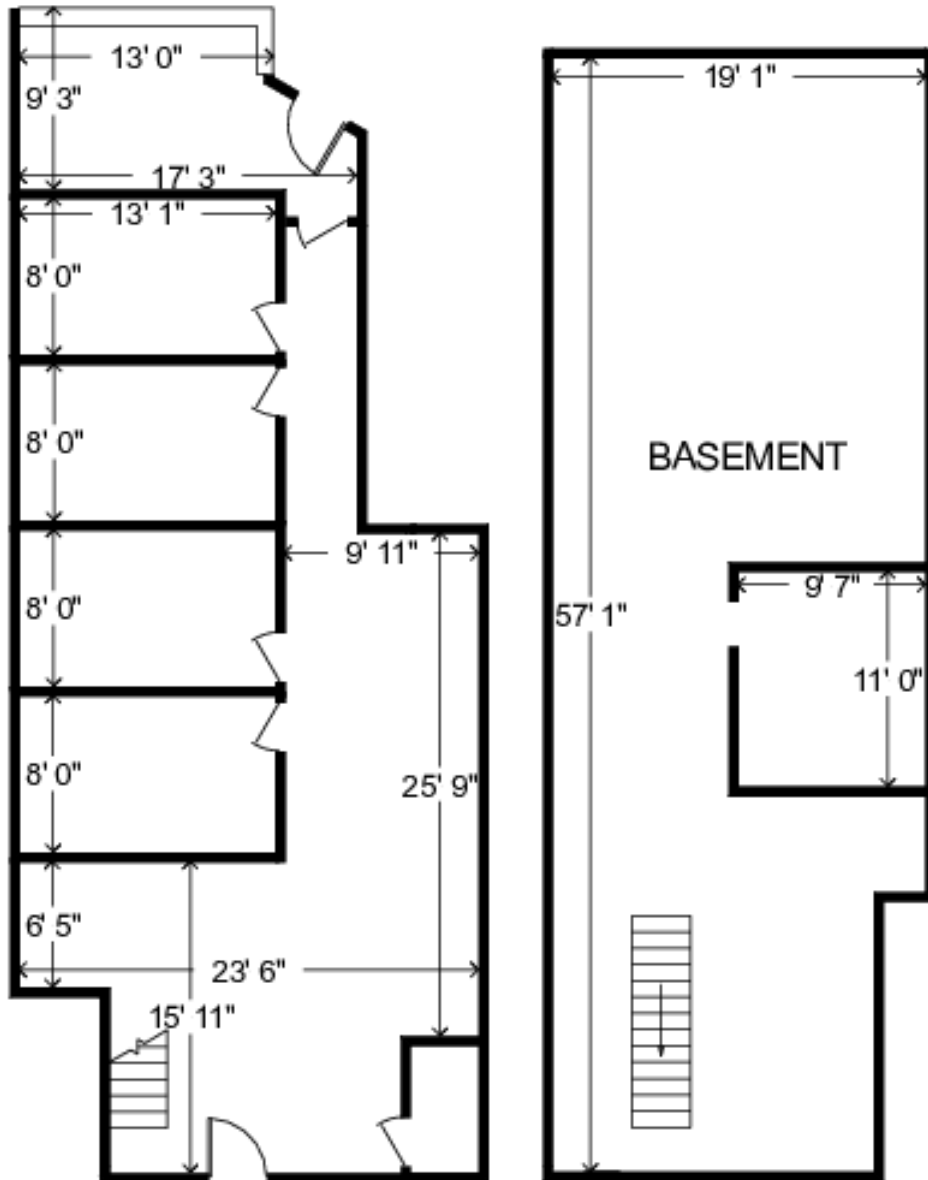
© 2018 All information supplied is from sources deemed reliable and is furnished subject to errors, omissions, modifications, removal of the listing from sale or lease, and to any listing conditions, including the rates and manner of payment of commissions for particular offerings, the terms of which are available to principals or duly licensed brokers. Any square footage dimensions set forth are approximate.

1909-1911 Central Street

Evanston, IL 60201 |

For Lease

Retail Property



1909 Central Street Floor Plan

CHUCK WHITLOCK

312.275.3133

chuck@baumrealty.com



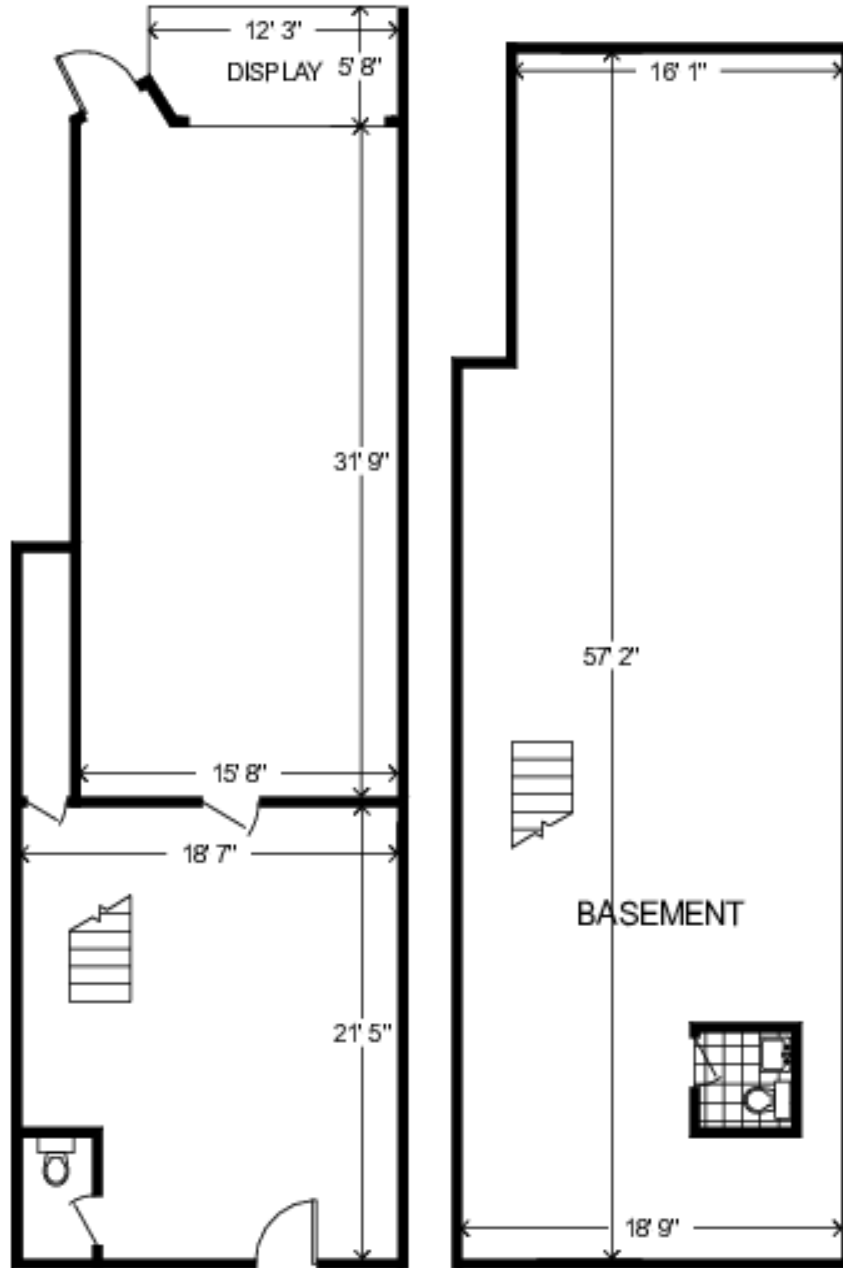
© 2018 All information supplied is from sources deemed reliable and is furnished subject to errors, omissions, modifications, removal of the listing from sale or lease, and to any listing conditions, including the rates and manner of payment of commissions for particular offerings, the terms of which are available to principals or duly licensed brokers. Any square footage dimensions set forth are approximate.

1909-1911 Central Street

Evanston, IL 60201 |

For Lease

Retail Property



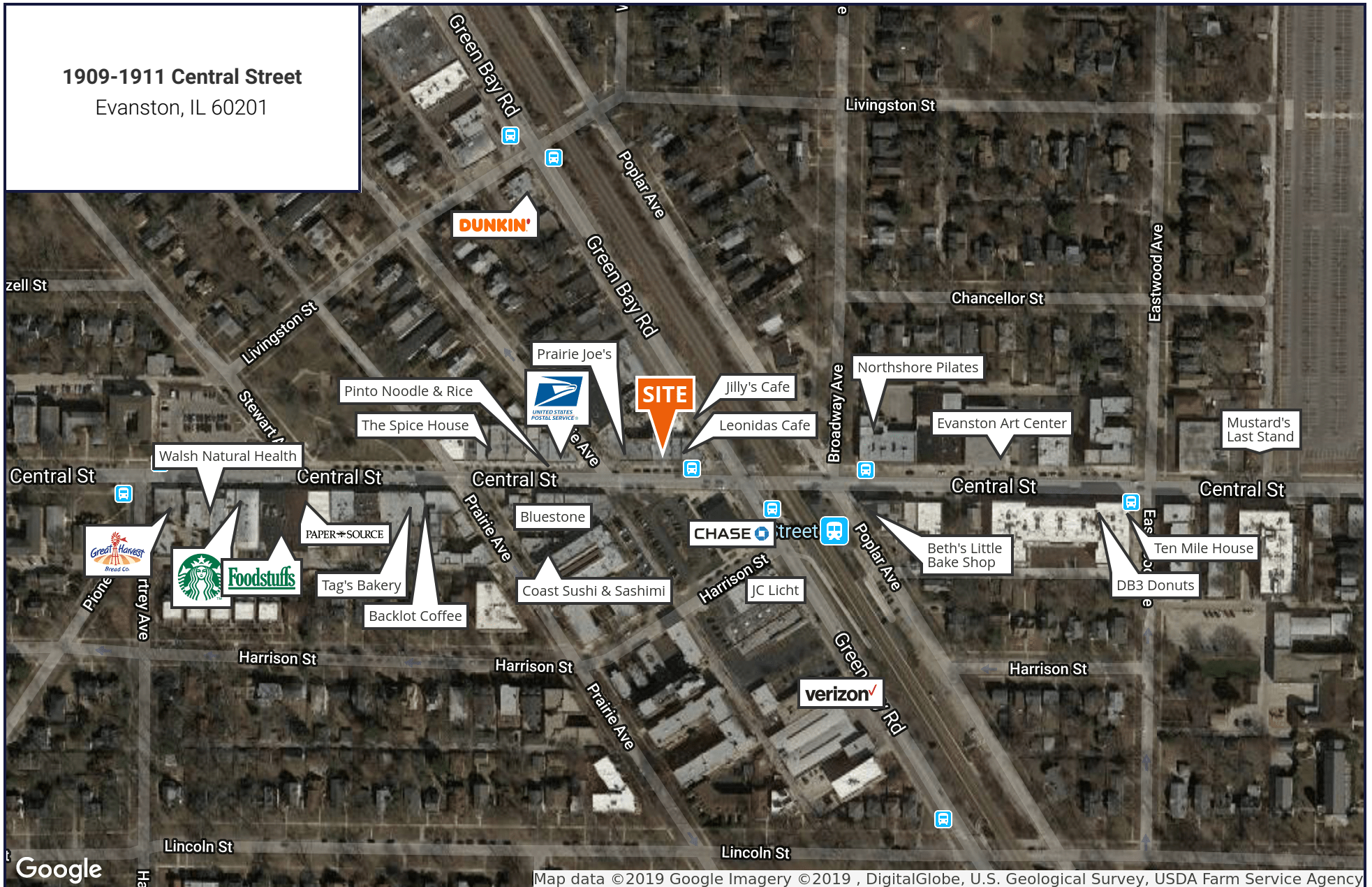
1911 Central Road Floor Plan

CHUCK WHITLOCK
312.275.3133
chuck@baumrealty.com



© 2018 All information supplied is from sources deemed reliable and is furnished subject to errors, omissions, modifications, removal of the listing from sale or lease, and to any listing conditions, including the rates and manner of payment of commissions for particular offerings, the terms of which are available to principals or duly licensed brokers. Any square footage dimensions set forth are approximate.

1909-1911 Central Street
Evanston, IL 60201



© 2018 All information supplied is from sources deemed reliable and is furnished subject to errors, omissions, modifications, removal of the listing from sale or lease, and to any listing conditions, including the rates and manner of payment of commissions for particular offerings, the terms of which are available to principals or duly licensed brokers. Any square footage dimensions set forth are approximate.

