

# For Lease

Retail Space

# 2045 S. Plum Grove Road

Rolling Meadows, IL 60008



- Retail space available for lease at CVS anchored center
- Located at the intersection of Euclid Avenue and Plum Grove Road in Rolling Meadows
- 1,683 - 5,396 SF available
- On-site parking lot
- Area tenants include BMO Harris Bank, Jiffy Lube, The UPS Store and Subway

## DEMOGRAPHIC SUMMARY

	RADIUS		
	1 MILE	3 MILES	5 MILES
AVERAGE HHI	\$125,296	\$103,306	\$102,533
DAYTIME POPULATION	9,317	87,537	246,393
RESIDENTIAL POPULATION	11,431	87,399	258,952

## TRAFFIC COUNTS

S. PLUM GROVE ROAD	11,950 VPD
EUCLID AVENUE	20,800 VPD

Doug Renner  
312.275.3137  
doug.renner@baumrealty.com

Mark Fredericks  
312.275.3109  
mark@baumrealty.com



# For Lease

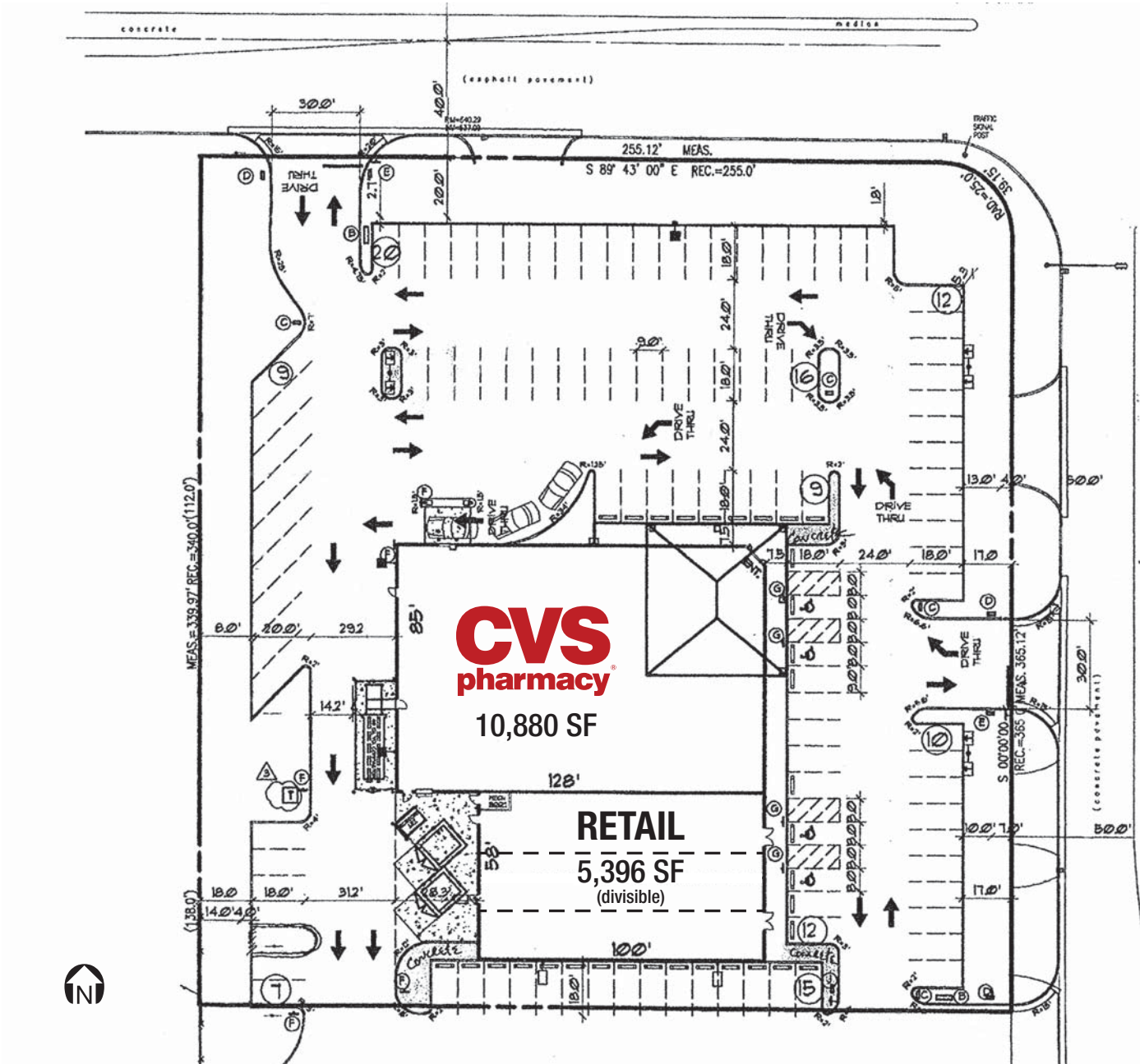
Retail Space

# 2045 S. Plum Grove Road

Rolling Meadows, IL 60008

## EUCLID AVENUE

## S. PLUM GROVE ROAD



Doug Renner  
312.275.3137  
doug.renner@baumrealty.com

Mark Fredericks  
312.275.3109  
mark@baumrealty.com



