

3215 W. Armitage Avenue

LOGAN SQUARE / HUMBOLDT PARK | CHICAGO, IL 60647

For Lease

RETAIL SPACE



► ±1,500 SF storefront available for the first time in 15 years!

- Excellent visibility along Armitage Avenue
- Surrounded by popular dining and nightlife destinations including Giant, Scofflaw, The Moonlighter, Outside Voices, Parson's Chicken & Fish, Dante's Pizzeria, Solemn Oath Brewery Still Life, Best Intentions, and local legend Rosa's Lounge
- Located at the border of Logan Square, named one of the world's coolest neighborhoods by Time Out, and Humboldt Park, recognized as one of Redfin's hottest U.S. neighborhoods

DEMOGRAPHIC SUMMARY

	.25 Mi	.50 Mi	1 Mi
Estimated Population	4,996	18,238	67,218
Adj. Daytime Population	3,158	11,096	43,408
Estimated Households	2,359	8,188	29,593
Estimated Average Household Income	\$126,367	\$129,228	\$130,293

NICOLE CARDOT

nicole@baumrealty.com
312.275.0371

DEENA ZIMMERMAN

deena@baumrealty.com
312.858.3897



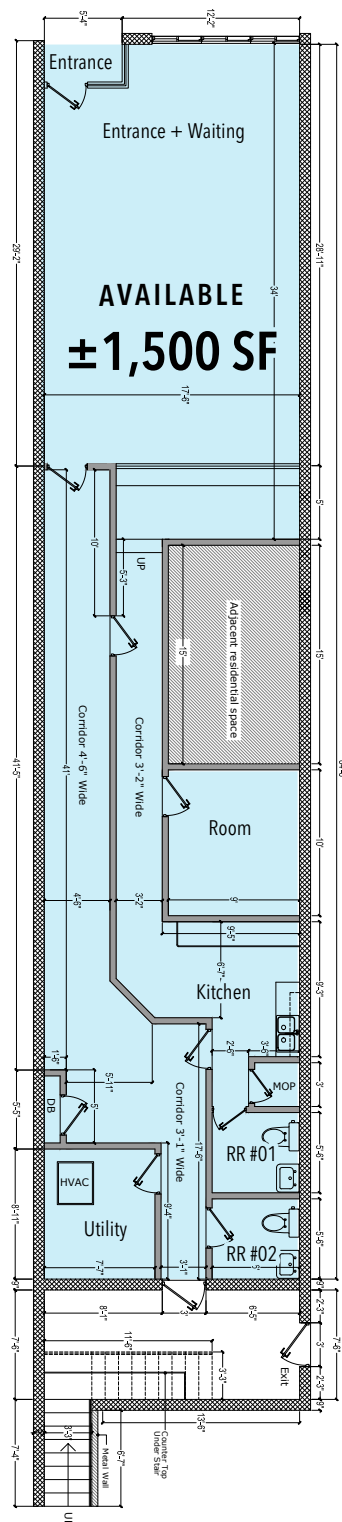
© 2025 All information supplied is from sources deemed reliable and is furnished subject to errors, omissions, modifications, removal of the listing from sale or lease, and to any listing conditions, including the rates and manner of payment of commissions for particular offerings, the terms of which are available to principals or duly licensed brokers. Any square footage dimensions set forth are approximate.

BAUM REALTY GROUP, LLC · 1030 W. CHICAGO AVENUE, SUITE 200 · CHICAGO, IL 60642 · 312.666.3000 · WWW.BAUMREALTY.COM

LOGAN SQUARE / HUMBOLDT PARK | CHICAGO, IL 60647

RETAIL SPACE

W. ARMITAGE AVENUE



312.275.0371

312.858.3897



© 2025 All information supplied is from sources deemed reliable and is furnished subject to errors, omissions, modifications, removal of the listing from sale or lease, and to any listing conditions, including the rates and manner of payment of commissions for particular offerings, the terms of which are available to principals or duly licensed brokers. Any square footage dimensions set forth are approximate.

BAUM REALTY GROUP, LLC · 1030 W. CHICAGO AVENUE, SUITE 200 · CHICAGO, IL 60642 · 312.666.3000 · WWW.BAUMREALTY.COM

3215 W. Armitage Avenue
Chicago, IL

