

For Sale

Land

350 E. North Avenue

Lombard, IL 60148



- 3.31 acres available for sale just off the corner of North Avenue and Grace Street in Lombard, IL
- Heavy traffic volume along North Avenue
- Close proximity to I-355 and I-83
- Area tenants include CVS, Starbucks, Jimmy John's, McDonald's, Dunkin Donuts, Bank of America, Aldi, Portillo's and Target

DEMOGRAPHIC SUMMARY

	RADIUS		
	1 MILE	3 MILES	5 MILES
AVERAGE HHI	\$89,884	\$85,266	\$91,826
DAYTIME POPULATION	12,917	82,697	273,039
RESIDENTIAL POPULATION	7,720	102,615	296,091

TRAFFIC COUNTS

E. NORTH AVENUE	41,600 VPD
-----------------	------------

Doug Renner
312.275.3137
doug.renner@baumrealty.com

Mark Fredericks
312.275.3109
mark@baumrealty.com

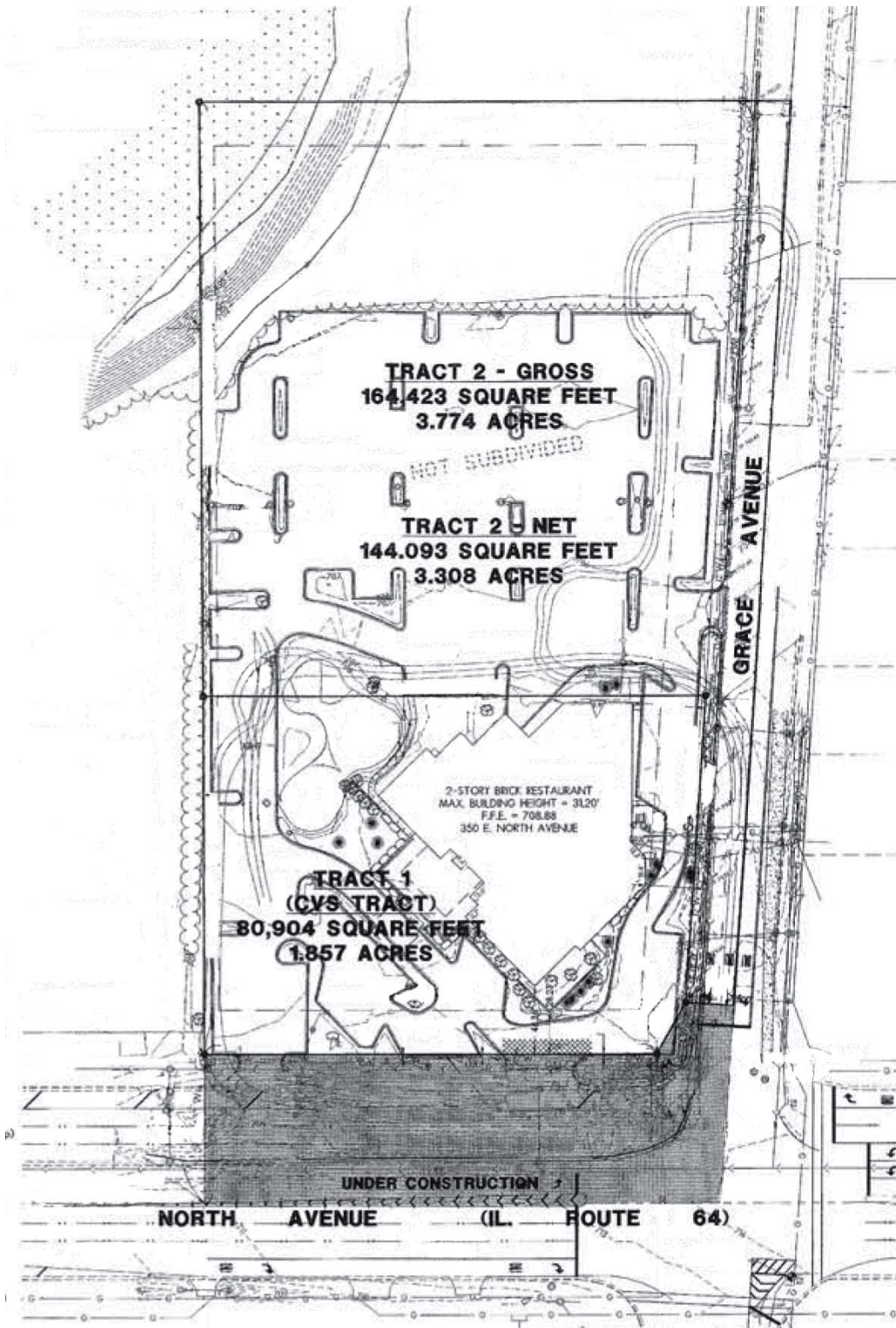


For Sale

Land

350 E. North Avenue

Lombard, IL 60148



Doug Renner
312.275.3137
doug.renner@baumrealty.com

Mark Fredericks
312.275.3109
mark@baumrealty.com



