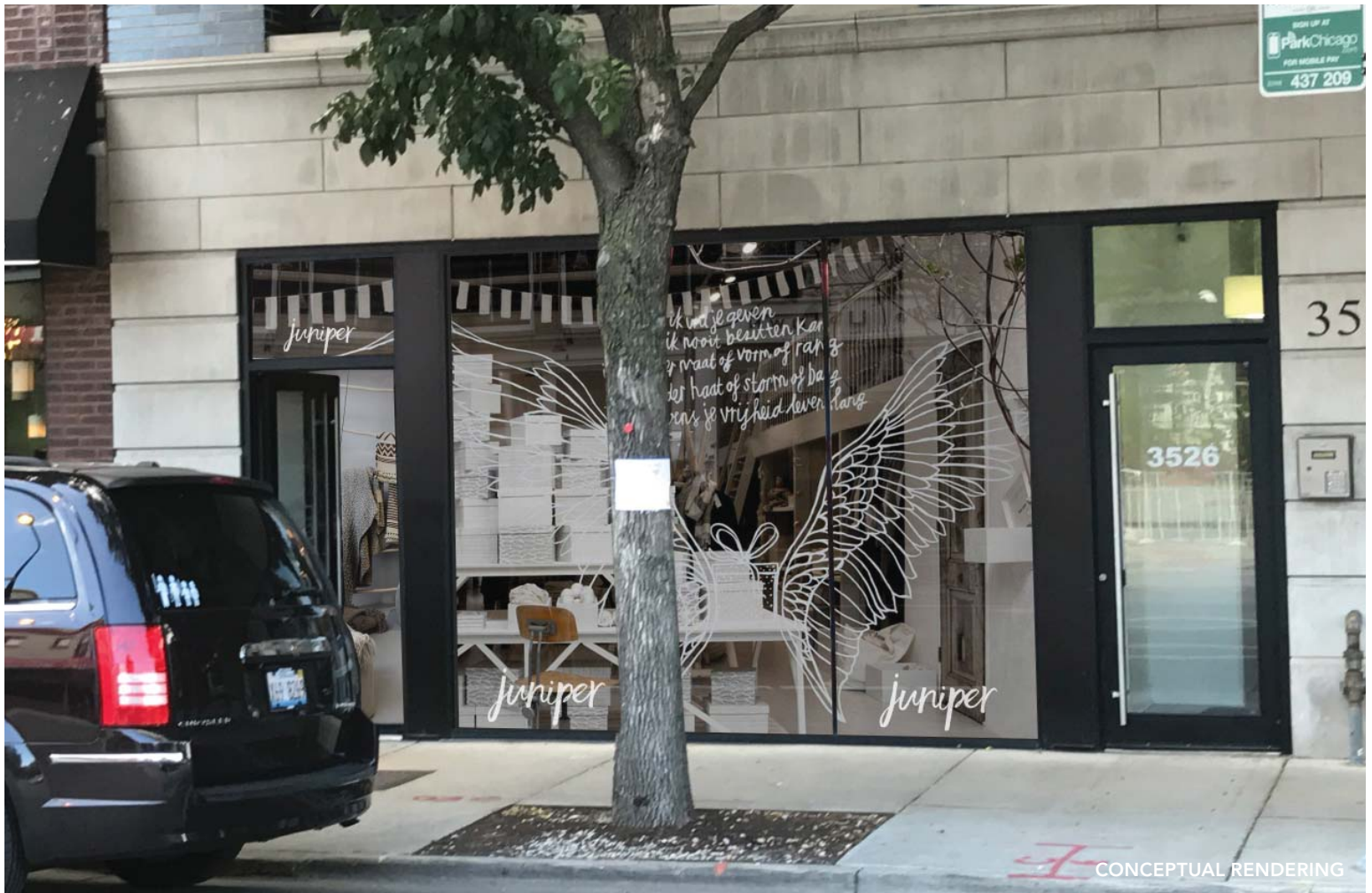


# For Lease

Retail Space

# 3526 N. Halsted Street

Chicago, IL 60657 | Lakeview



- 900 SF available
- Less than 2 blocks from Whole Foods Market
- 3 blocks from the Addison CTA Red Line 'L' Station (3.1M riders annually)
- 4 blocks from Wrigley Field (currently undergoing a five-year \$575M renovation) and Hotel Zachary, a seven-story 175 room hotel with ground floor retail (opening 2018)
- Easy access to Lake Shore Drive

- Area retailers include Starbucks, Dunkin Donuts, Peet's Coffee, Forever Yogurt, BMO Harris Bank, Wood, Lark, and Chicago Diner

## DEMOGRAPHIC SUMMARY

	RADIUS		
	.25 MILE	.5 MILE	1 MILE
AVERAGE HHI	\$99,077	\$100,705	\$109,820
DAYTIME POPULATION	4,116	15,048	48,333
RESIDENTIAL POPULATION	7,918	29,293	88,449

## TRAFFIC COUNTS

N. HALSTED STREET	11,800 VPD
-------------------	------------

Trevor Jack  
312.275.3128  
trevor@baumrealty.com

Mark Fredericks  
312.275.3109  
mark@baumrealty.com



