

UPTOWN / EDGEWATER SPACE FOR LEASE

# Retail at The Wilmore

4600 N. KENMORE AVENUE // CHICAGO, IL 60641



**Doug Renner**  
312.275.3137  
doug.renner@baumrealty.com

**Mark Fredericks**  
312.275.3109  
mark@baumrealty.com

**Kerwin Alvero**  
312.275.2189  
kerwin@baumrealty.com





## AVAILABLE SPACE

**Up to ±2,621 SF (divisible)**

## PROPERTY HIGHLIGHTS

- + ±1,016 - 2,621 SF of retail space available
- + Located at the base of The Wilmore, a 62-unit apartment development completed in 2023
- + One block from Wilson CTA Red & Purple Line station (1M+ annual riders)
- + Prominent corner location at Kenmore & Wilson with high visibility
- + Just steps from Truman College (8,000+ students, faculty, and staff)
- + Surrounded by vibrant local dining, new residential projects, and ongoing investment in Uptown's commercial core

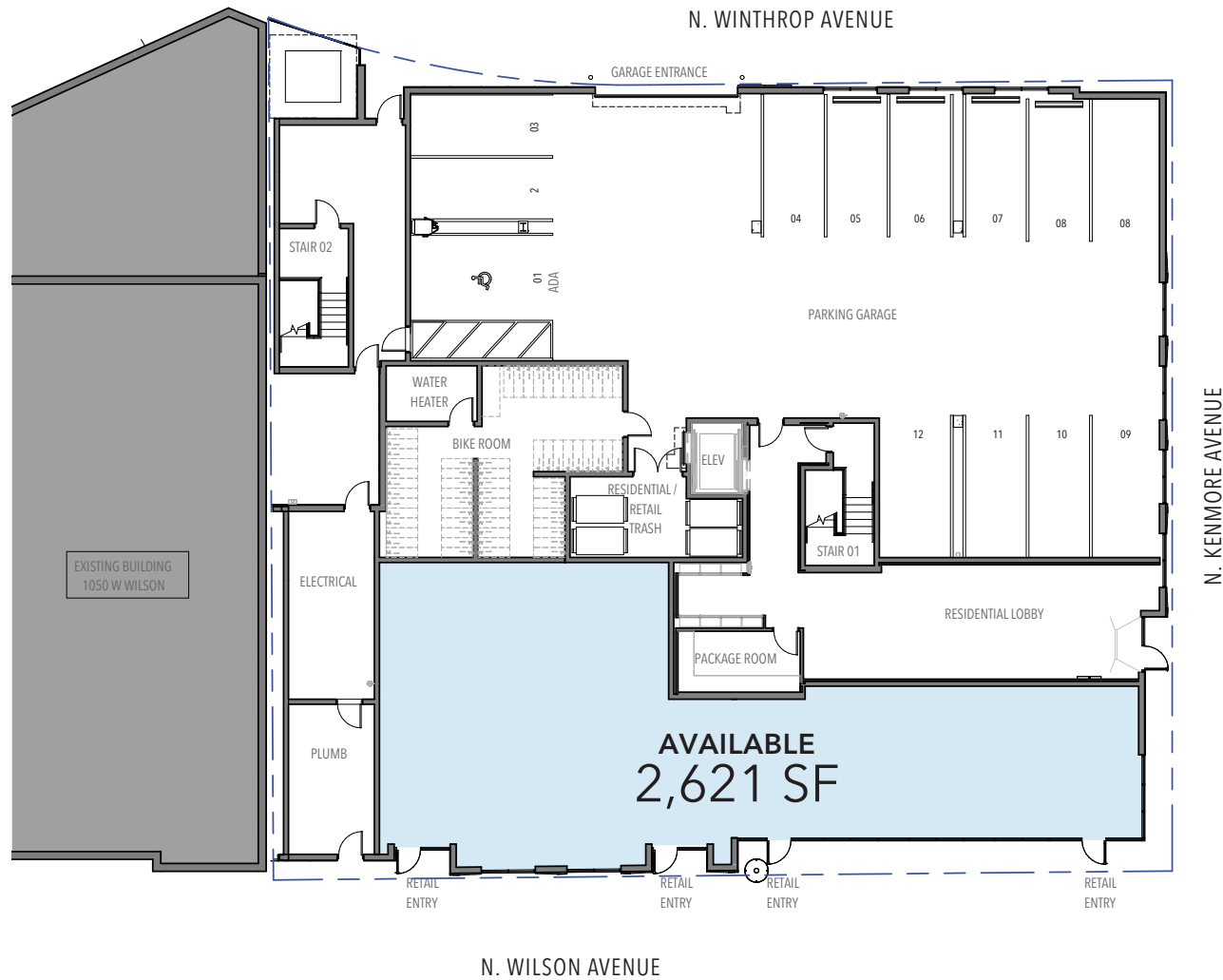


**Doug Renner**  
312.275.3137  
doug.renner@baumrealty.com

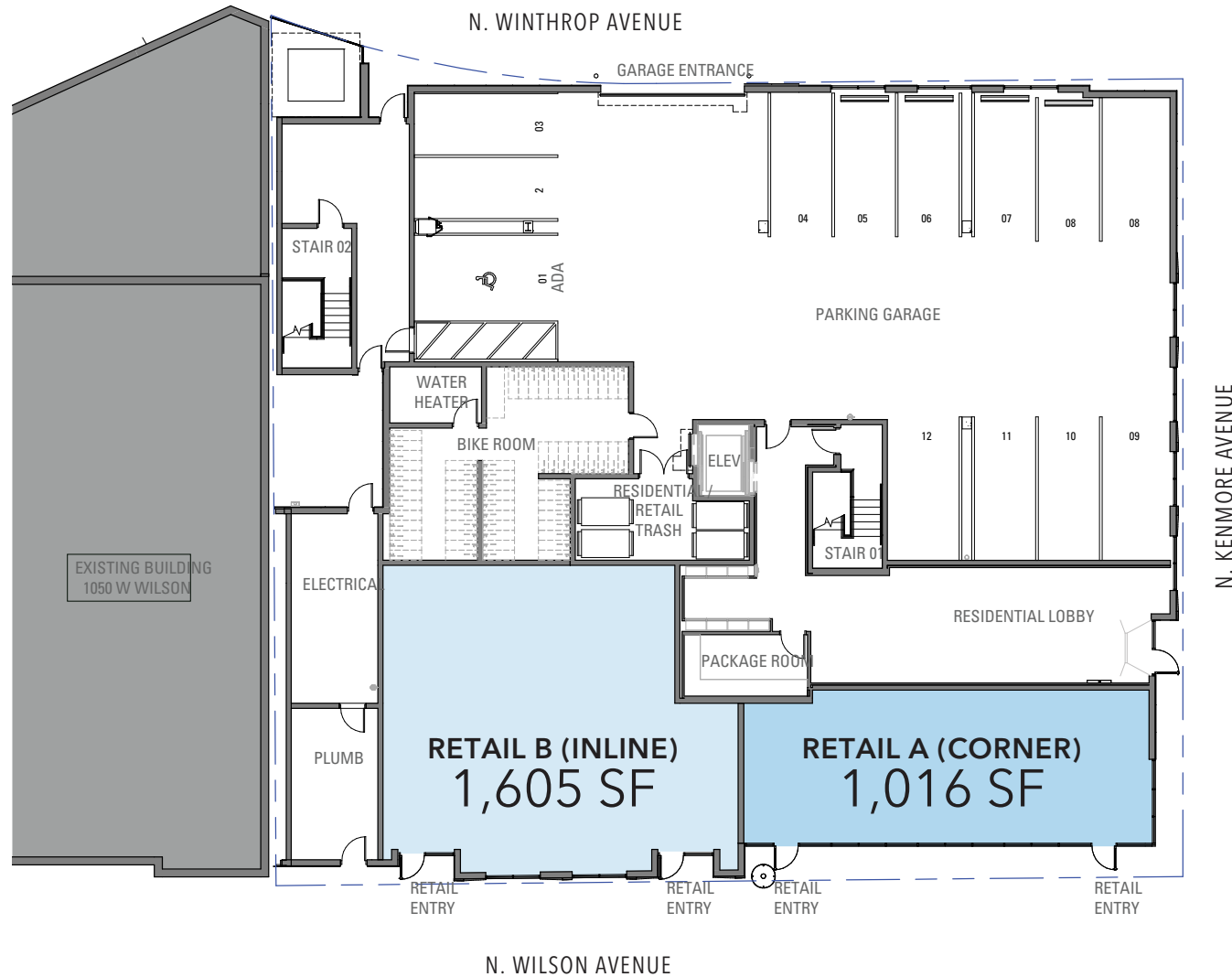
**Mark Fredericks**  
312.275.3109  
mark@baumrealty.com

**Kerwin Alvero**  
312.275.2189  
kerwin@baumrealty.com

## Floor Plan - Single Tenant Layout



## Floor Plan - Multi-Tenant Layout





# Dynamic Uptown Location

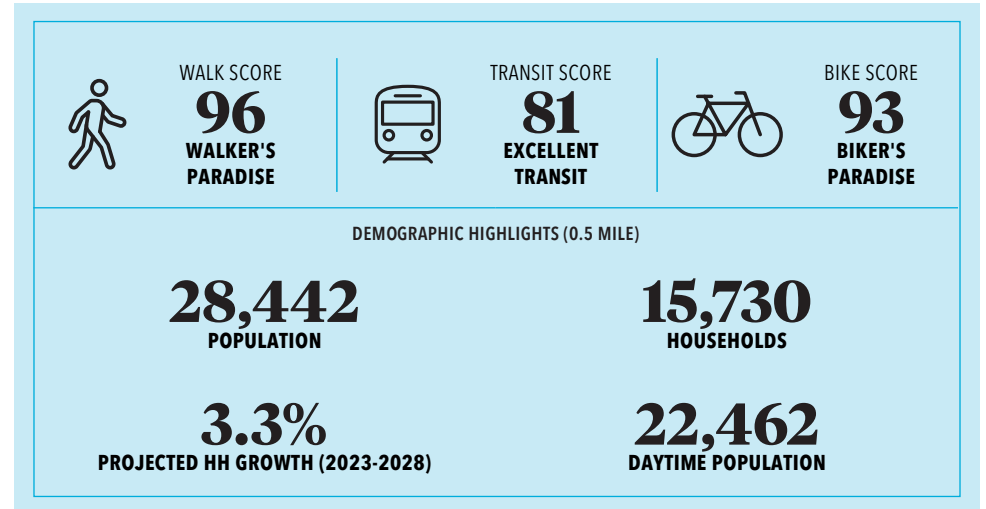
Located at the corner of Kenmore & Wilson in Chicago's Uptown neighborhood, **The Wilmore offers a prominent corner retail opportunity surrounded by a mix of historic architecture, new development, and cultural landmarks.** The property sits just one block from the Wilson CTA station and steps from Truman College, with daily foot traffic from students, commuters, and neighborhood residents. Anchored by nearby icons like The Riviera Theatre, Aragon Ballroom, and a growing lineup of local dining spots, this stretch of Wilson is emerging as a vibrant and walkable commercial corridor.

**Uptown continues to attract investment in housing, retail, and entertainment,** with nearby anchors like Target, the Riviera Theatre, The Aragon Ballroom, and the iconic Green Mill. Recent multifamily developments and streetscape improvements along Wilson Avenue and Broadway are bringing new energy and foot traffic to the area, with more residents, students, and visitors contributing to the neighborhood's ongoing transformation. The Wilmore is well-positioned to benefit from this momentum as Uptown evolves into one of Chicago's most dynamic and connected North Side communities.



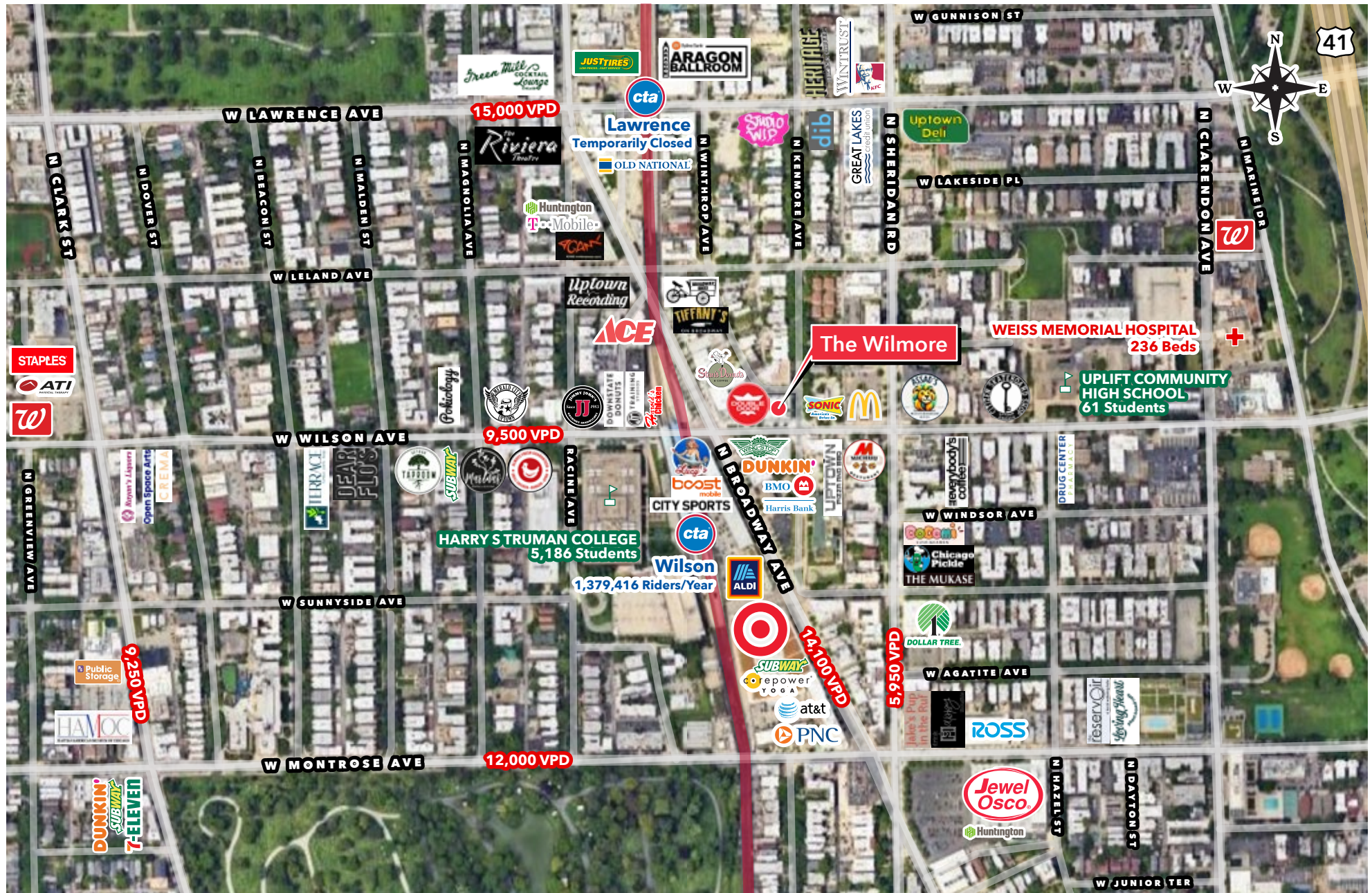
**Doug Renner**  
312.275.3137  
doug.renner@baumrealty.com

**Mark Fredericks**  
312.275.3109  
mark@baumrealty.com



**Kerwin Alvero**  
312.275.2189  
kerwin@baumrealty.com





Doug Renner  
312.275.3137  
doug.renner@baumrealty.com

Mark Fredericks  
312.275.3109  
mark@baumrealty.com

Kerwin Alvero  
312.275.2189  
kerwin@baumrealty.com





UPTOWN / EDGEWATER SPACE  
FOR LEASE

# Retail at The Wilmore

4600 N. KENMORE AVENUE //  
CHICAGO, IL 60641

FOR MORE INFORMATION CONTACT

**Doug Renner**  
312.275.3137  
[doug.renner@baumrealty.com](mailto:doug.renner@baumrealty.com)

**Mark Fredericks**  
312.275.3109  
[mark@baumrealty.com](mailto:mark@baumrealty.com)

**Kerwin Alvero**  
312.275.2189  
[kerwin@baumrealty.com](mailto:kerwin@baumrealty.com)

