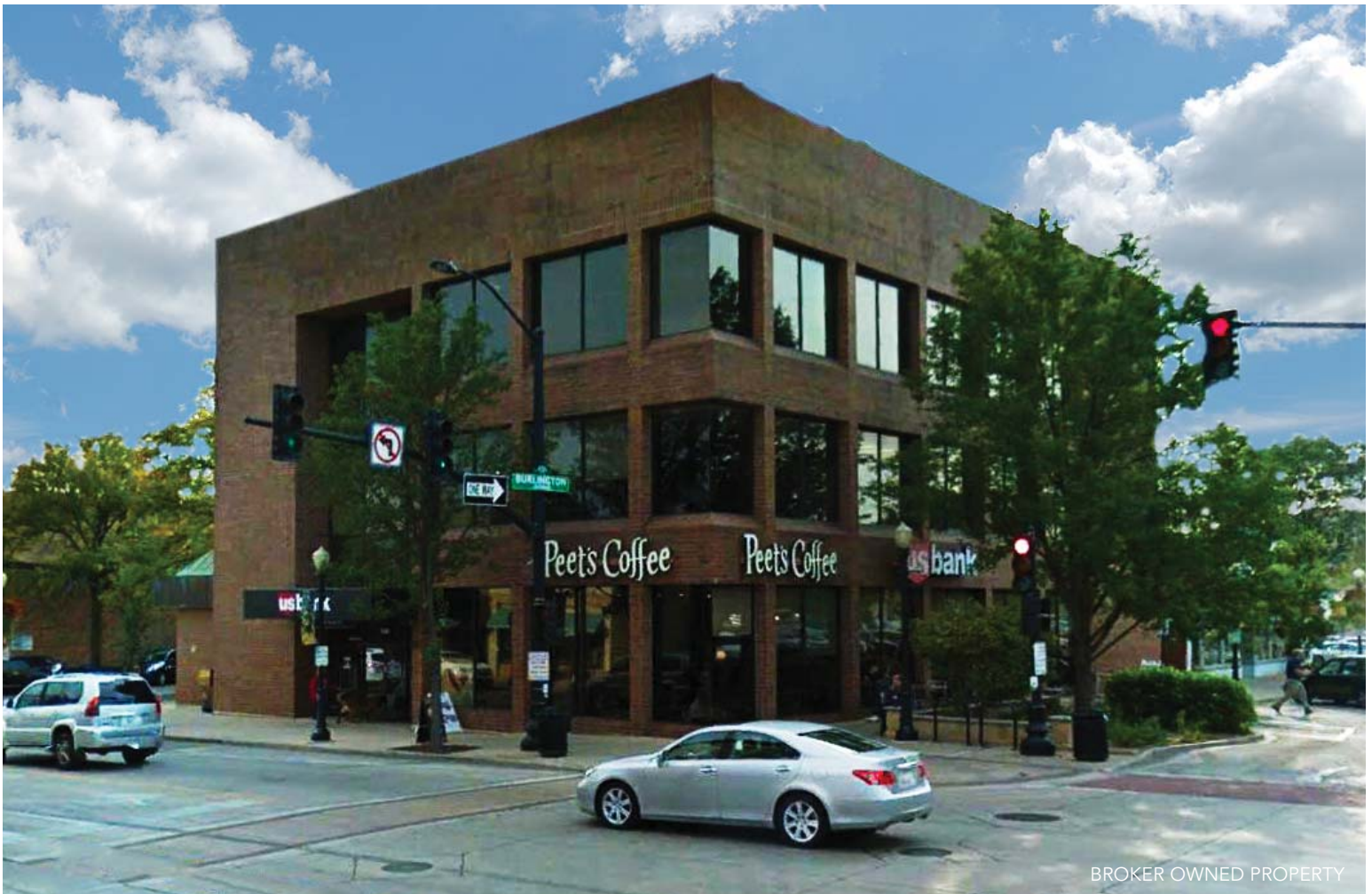


For Lease

Retail Space

5100 Main Street

Downers Grove, IL 60515



BROKER OWNED PROPERTY

- Available space:
±3,054 SF first floor space
±3,676 SF lower level space
- Fantastic location in the heart of downtown Downers Grove
- Across the street from the Downers Grove Metra Station
- Area tenants include Starbucks, Aurelio's Pizza, Giordano's, ATI Physical Therapy, Egg Harbor Cafe and Peet's Coffee and Tea
- Space is available June 1, 2019

DEMOGRAPHIC SUMMARY

	RADIUS		
	1 MILE	3 MILES	5 MILES
AVERAGE HHI	\$130,588	\$114,491	\$118,344
DAYTIME POPULATION	9,408	104,583	272,635
RESIDENTIAL POPULATION	14,562	99,372	255,964

TRAFFIC COUNTS

MAIN STREET	14,900 VPD
-------------	------------

Allen Joffe
312.275.3120
allen@baumrealty.com

Mark Fredericks
312.275.3109
mark@baumrealty.com



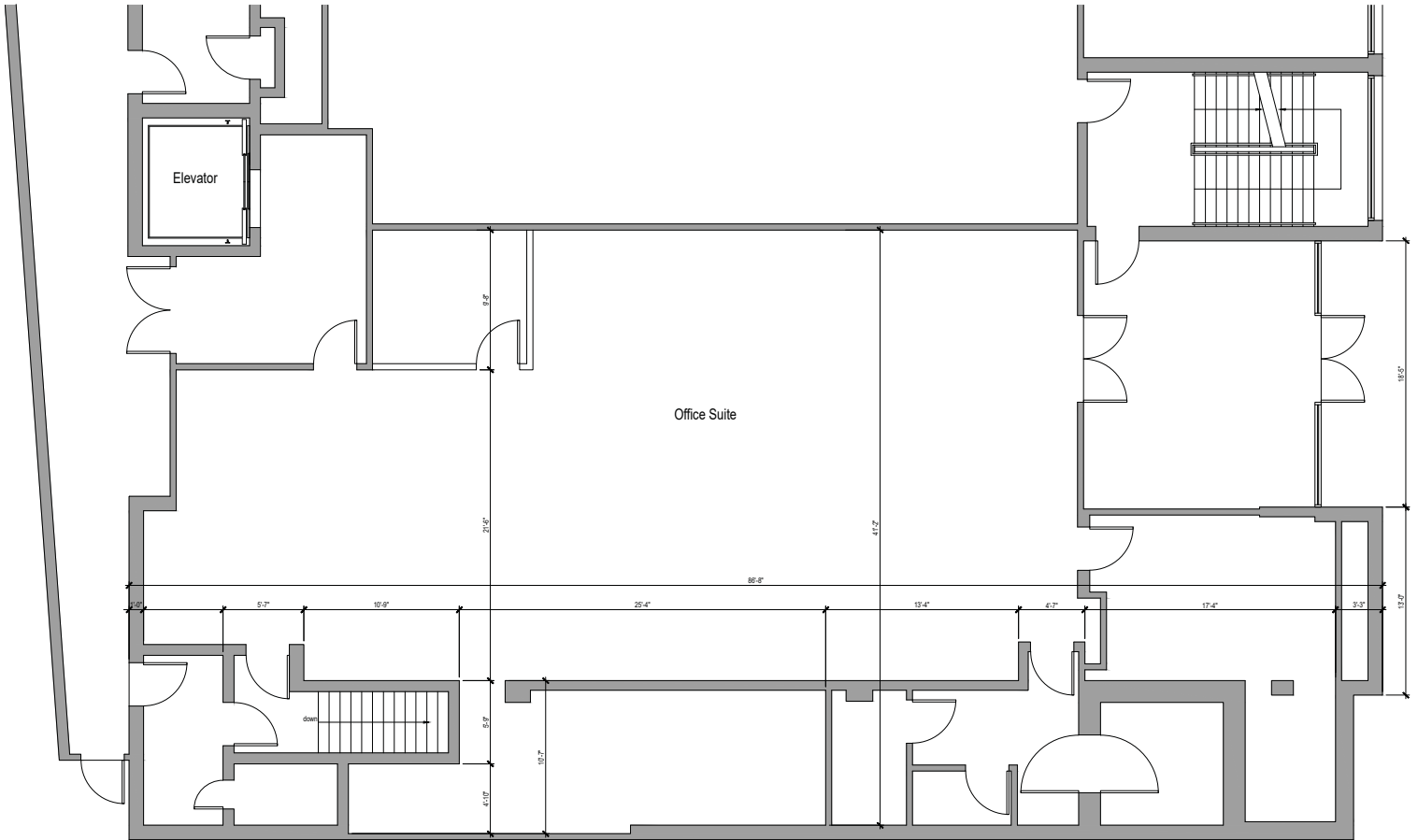
For Lease

Retail Space

5100 Main Street

Downers Grove, IL 60515

FIRST FLOOR SITE PLAN



Allen Joffe
312.275.3120
allen@baumrealty.com

Mark Fredericks
312.275.3109
mark@baumrealty.com



