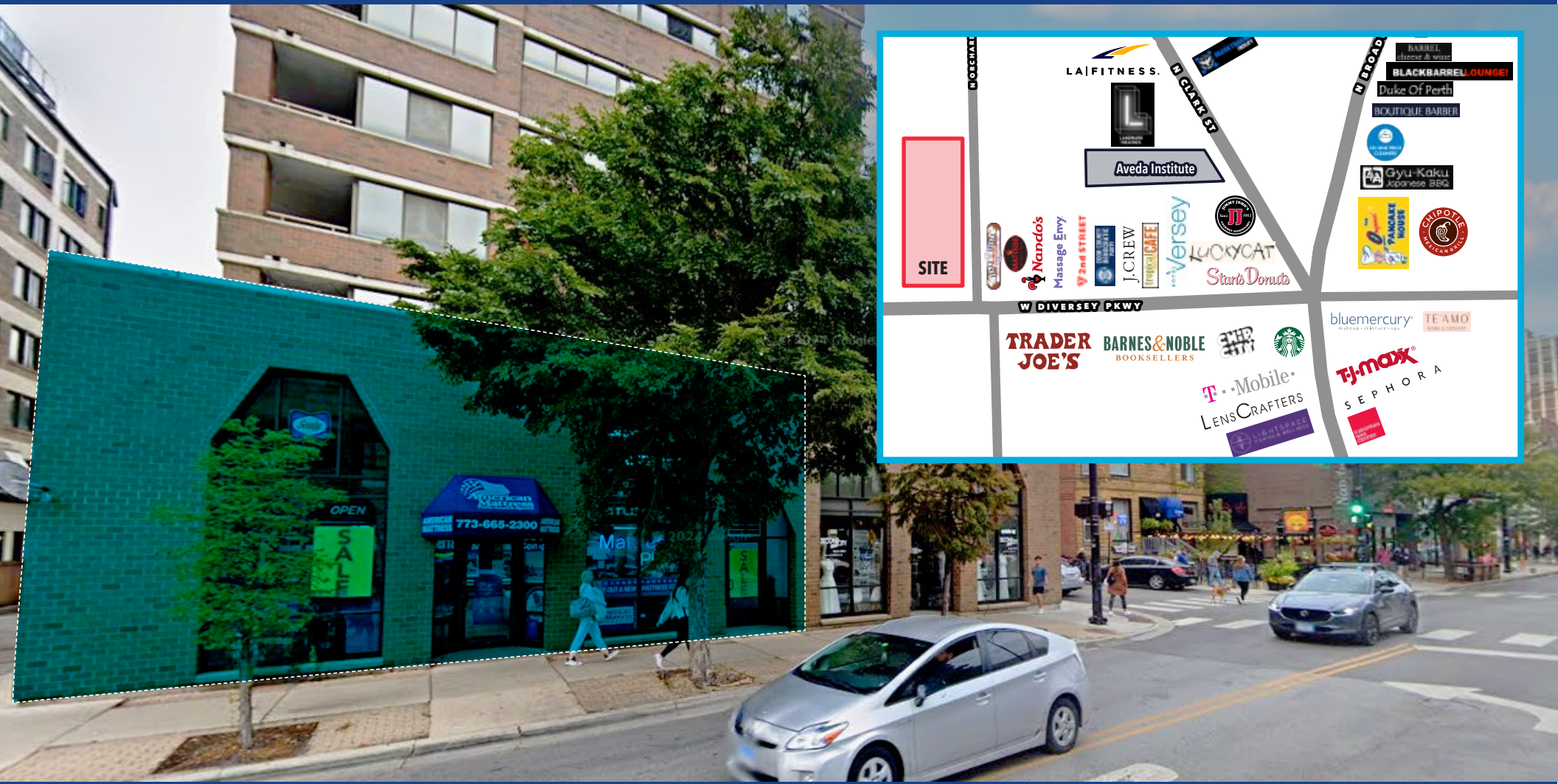


LAKEVIEW / LINCOLN PARK RETAIL SPACE FOR LEASE

# 702 W. Diversey Parkway

CHICAGO, IL 60614



Doug Renner  
doug.renner@baumrealty.com  
312.275.3137

Mark Fredericks  
mark@baumrealty.com  
312.275.3109





## AVAILABLE SPACE

**±1,882 SF +  
800 SF Mezzanine**

## PROPERTY HIGHLIGHTS

- + Well-positioned retail space on the border of Chicago's affluent Lincoln Park and Lakeview neighborhoods with excellent demographics and strong purchasing power
- + High daily vehicle and foot traffic along Diversey Parkway and Clark Street
- + ±40 feet of prominent frontage with expansive display windows for maximum visibility
- + Mezzanine level provides flexible space for retail displays, storage, or office use
- + Steps from top national and specialty retailers including Trader Joe's, Barnes & Noble, J.Crew Factory, Banana Republic Factory, Bluemercury, Target, and more



**Doug Renner**

doug.renner@baumrealty.com  
312.275.3137

**Mark Fredericks**

mark@baumrealty.com  
312.275.3109



**Doug Renner**  
doug.renner@baumrealty.com  
312.275.3137

**Mark Fredericks**  
mark@baumrealty.com  
312.275.3109





DEMOGRAPHIC SUMMARY  
0.5 MILE RADIUS

**34,827**  
W POPULATION

**22,285**  
HOUSEHOLDS

**\$155,107**  
AVERAGE HOUSEHOLD INCOME

**31,090**  
DAYTIME POPULATION



WALK SCORE  
**98**  
WALKER'S PARADISE



BIKE SCORE  
**90**  
BIKER'S PARADISE

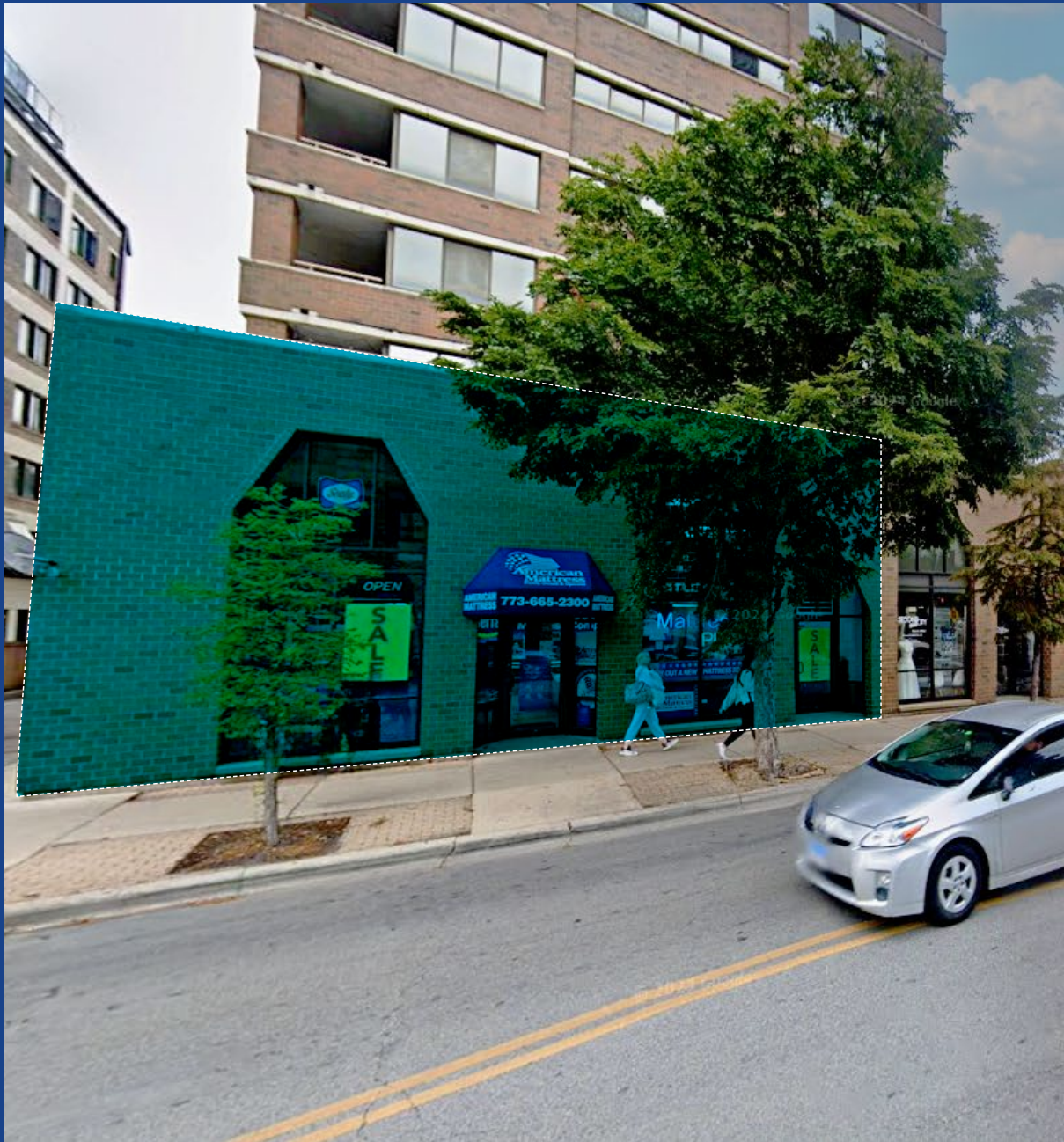


TRANSIT SCORE  
**81**  
EXCELLENT TRANSIT









LAKEVIEW / LINCOLN PARK  
RETAIL SPACE FOR LEASE

# 702 W. Diversey Parkway

CHICAGO, IL 60614

FOR MORE INFORMATION CONTACT

**Doug Renner**

[doug.renner@baumrealty.com](mailto:doug.renner@baumrealty.com)

312.275.3137

**Mark Fredericks**

[mark@baumrealty.com](mailto:mark@baumrealty.com)

312.275.3109





