

For Lease

Retail Space

W. 87th St & S. Lafayette Ave

Chicago, IL 60620 | Chatham

LOT 2

North Elevation



- One outlot left fronting 87th Street Center
Lot 1: 0.68 Acre available for ground lease
Lot 2: LEASE OUT
Lot 3: LEASE OUT
- Join GNC and Chipotle
- Delivery estimated for June 2017
- Anchored by Jewel, Burlington Coat Factory, Beauty One and Rainbow Shops
- Other area anchors include Marshalls, Walmart, Home Depot, Food 4 Less and Lowe's
- Sits at the entrance & exit ramps for the Dan Ryan Expressway
- The Dan Ryan Expressway receives over 263,100 VPD

- Dense residential population
- Outdoor seating available

DEMOGRAPHIC SUMMARY

	RADIUS		
	1 MILE	3 MILES	5 MILES
AVERAGE HHI	\$54,491	\$51,518	\$55,451
DAYTIME POPULATION	15,037	160,585	422,224
RESIDENTIAL POPULATION	24,712	269,069	671,756

TRAFFIC COUNTS

W. 87 TH STREET	25,500 VPD
----------------------------	------------

Allen Joffe
312.275.3120
allen@baumrealty.com

Trevor Jack
312.275.3128
trevor@baumrealty.com



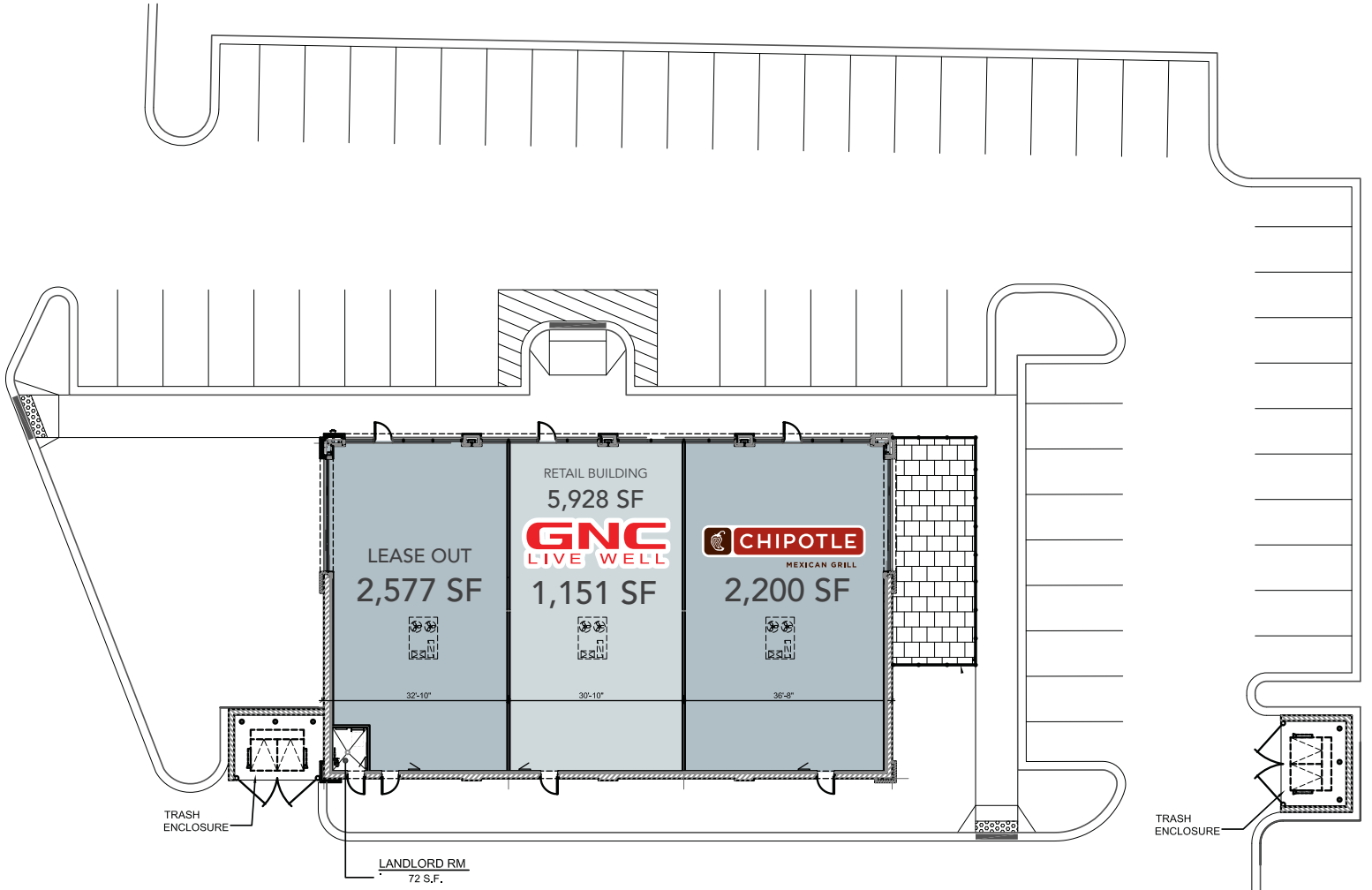
For Lease

Retail Space

W. 87th St & S. Lafayette Ave

Chicago, IL 60620 | Chatham

LOT 2 



PRELIMINARY AND SUBJECT TO CHANGE

Allen Joffe
312.275.3120
allen@baumrealty.com

Trevor Jack
312.275.3128
trevor@baumrealty.com

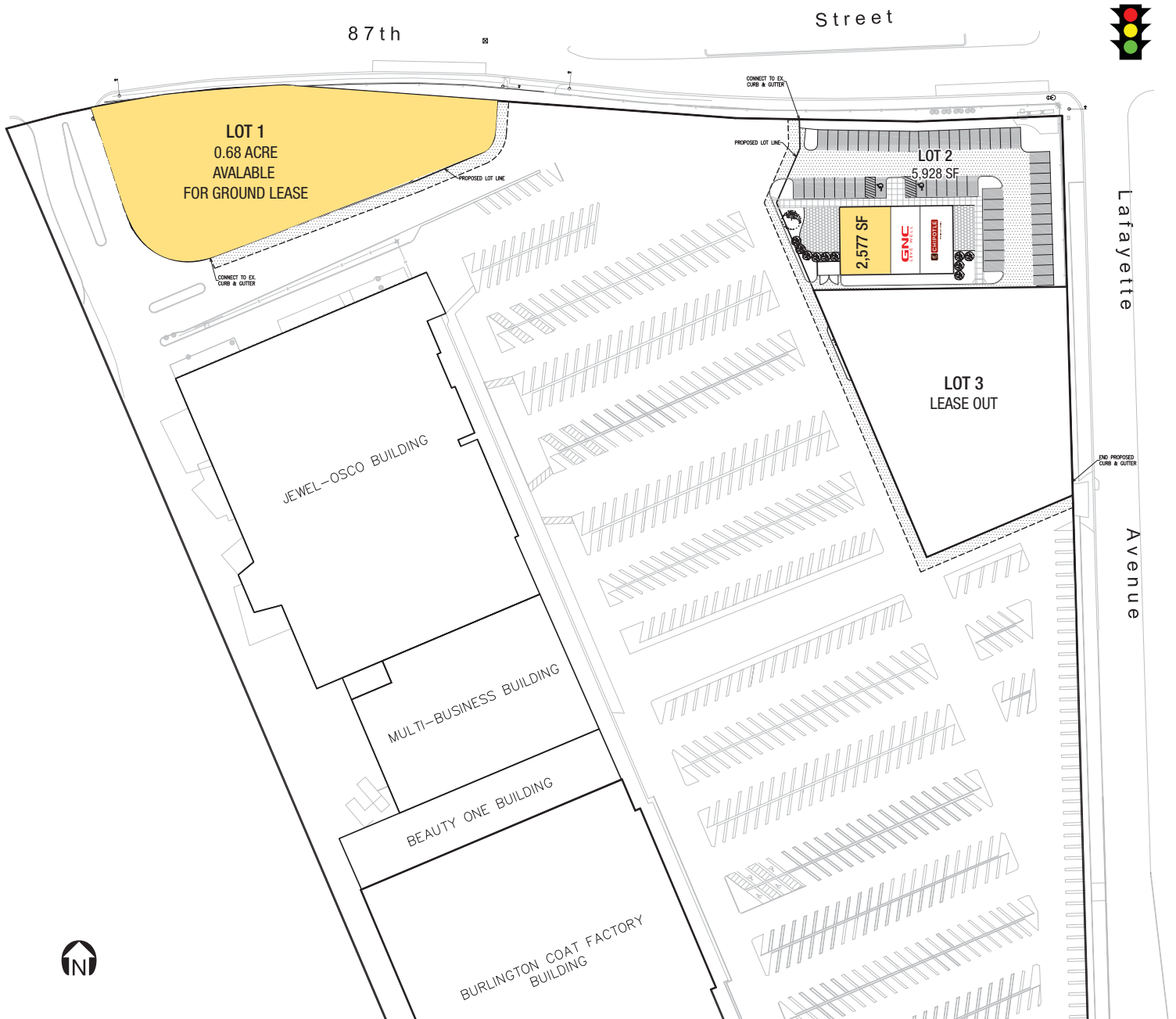


For Lease

Retail Space

W. 87th St & S. Lafayette Ave

Chicago, IL 60620 | Chatham



Allen Joffe
312.275.3120
allen@baumrealty.com

Trevor Jack
312.275.3128
trevor@baumrealty.com



