



CHESTNUT  
— PLACE —  
GOLD COAST

# HIGH-END REDEVELOPMENT OF SMALL SHOP RETAIL AT THE CORNER OF STATE & CHESTNUT



CONCEPTUAL

ADAM SECHER  
312.275.3130  
adam@baumrealty.com

JANIKA BRENNER  
312.275.3119  
janika@baumrealty.com

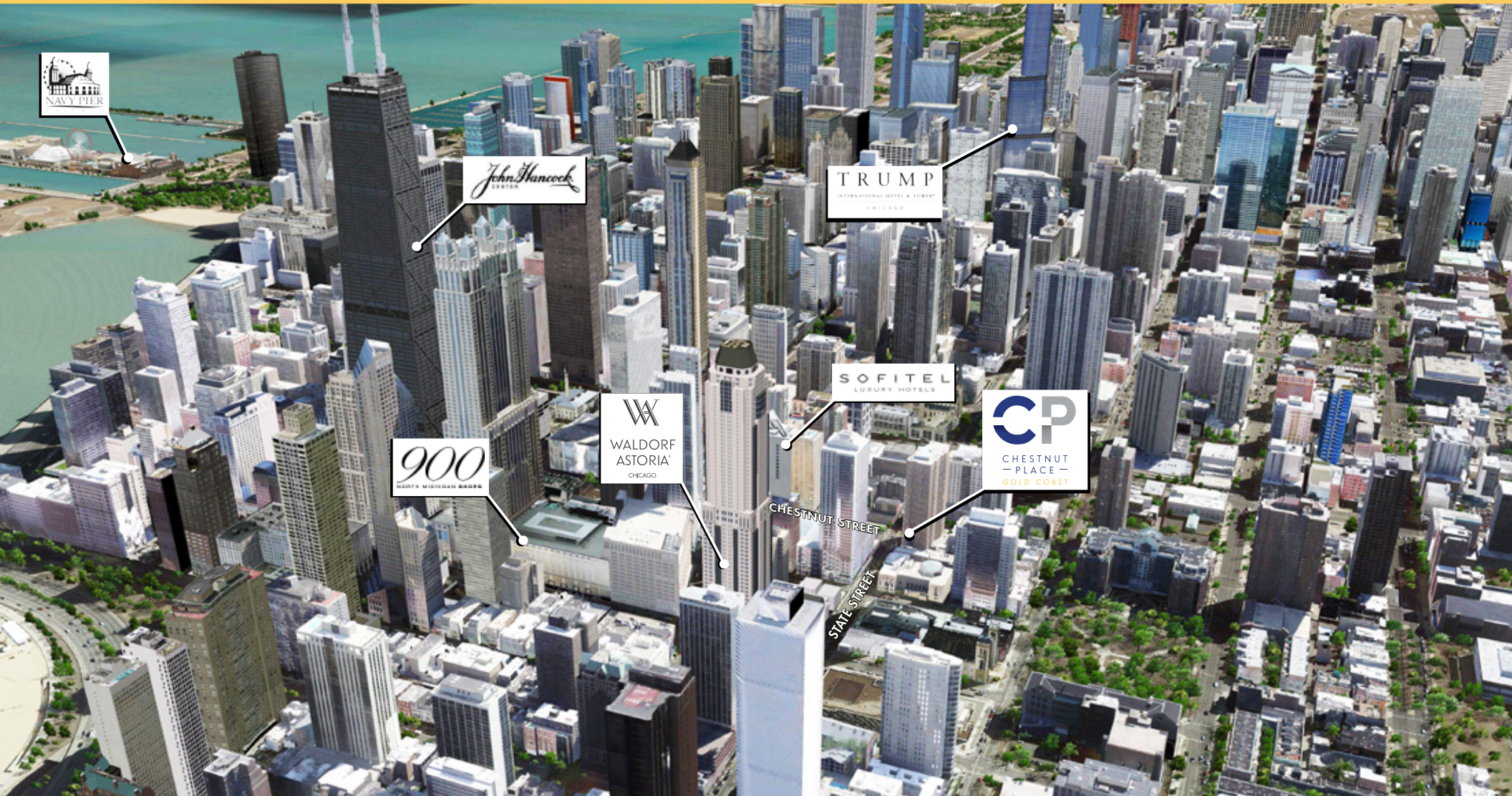






CHESTNUT  
— PLACE —  
GOLD COAST

Located at the highly visible northwest corner of State Street & Chestnut Street, this retail redevelopment sits at the base of a 30-story, 280-unit luxury apartment building in Chicago's Gold Coast neighborhood. Surrounded by high-end residential, popular restaurants and dynamic retail, this unique opportunity offers retailers a Gold Coast presence with significant branding potential.







CONCEPTUAL

# Highly visible Gold Coast corner with four small shop retail opportunities

- Delivery in Q3 2017
- Two-story storefronts available
- Located at the corner of State Street & Chestnut Street in the heart of Chicago's Gold Coast
- Michigan Avenue visibility
- Fashion and restaurant co-tenancy includes Marc Jacobs, Saint Laurent, Brioni, BHLDN, Starbucks, Potash, Tempo, Madewell, Marmot, Barneys New York, Le Colonial, Hermès, Oliver Peoples, Gibsons, Rag & Bone, Intermix and Brunello Cucinelli among others

## AVAILABLE RETAIL SPACE :

Retail 1*	2,676 SF
Retail 2*	2,061 SF
Retail 3*	1,376 SF
Retail 4	755 SF

\*Spaces can be combined



CHESTNUT  
— PLACE —  
GOLD COAST

# RETAIL SITE PLAN



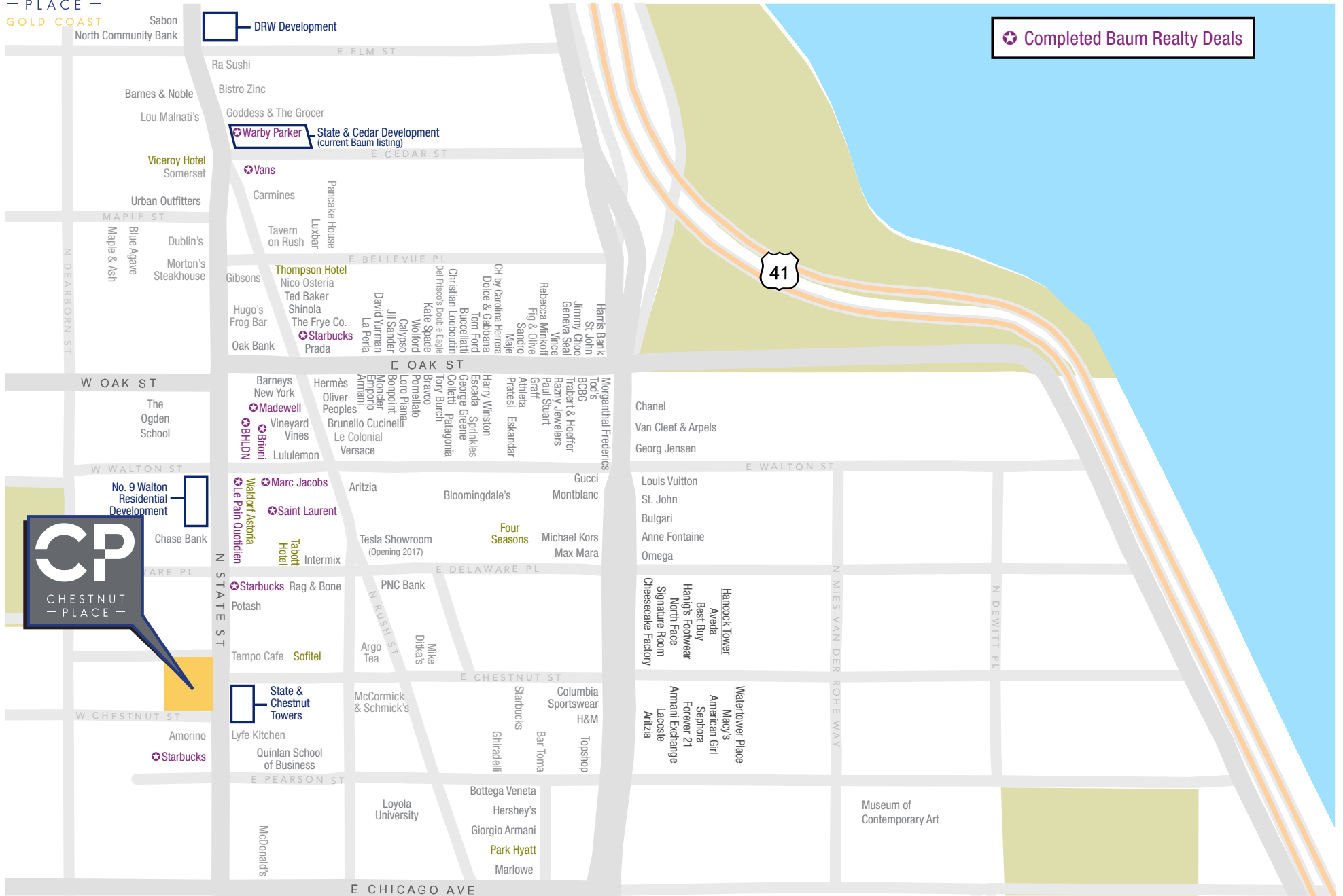
\*Spaces can be combined





CHESTNUT  
— PLACE —  
GOLD COAST

# GOLD COAST RETAIL MAP

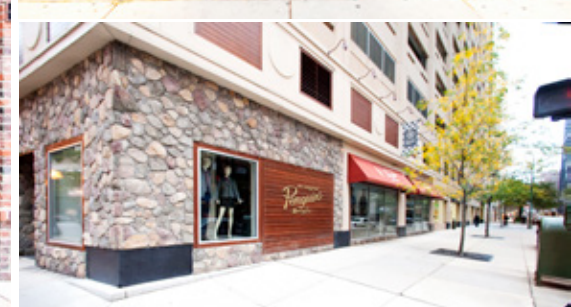






# GOLD COAST RETAILERS

CHESTNUT  
— PLACE —  
GOLD COAST







CONCEPTUAL



CHESTNUT  
— PLACE —  
GOLD COAST

## HIGH-END REDEVELOPMENT OF SMALL SHOP RETAIL AT THE CORNER OF STATE & CHESTNUT

For more information about this unparalleled leasing opportunity please contact:

Adam Secher  
312.275.3130  
adam@baumrealty.com

Janika Brenner  
312.275.3119  
janika@baumrealty.com

A DEVELOPMENT OF  
GOLUB & COMPANY



© 2015 All information supplied is from sources deemed reliable and is furnished subject to errors, omissions, modifications, removal of the listing from sale or lease, and to any listing conditions, including the rates and manner of payment of commissions for particular offerings, the terms of which are available to principals or duly licensed brokers. This information may include estimates and projections with respect to future events, and these future events may or may not actually occur. Such estimates and projections reflect various assumptions concerning anticipated results. While we believe these assumptions are reasonable, there can be no assurance that any of these estimates and projections will prove to have been correct. Therefore, actual results may vary materially from these forward-thinking estimates and projections. Any square footage dimensions set forth are approximate.

