

H CITY DE PARK

Hyde Park
Captures
Obama
Presidential
Library!



51st & Lake Park Avenue · Chicago, IL

Doug Renner

312.275.3137

doug.renner@baumrealty.com

William Selonick

312.224.3211

wselonick@ngkf.com

Trevor Jack

312.275.3128

trevor@baumrealty.com

 **BAUM**
REALTY GROUP

SMALL SHOP SPACES AVAILABLE ALONG HARPER COURT & 51ST STREET



SITE HIGHLIGHTS

- ▶ With 110,000 SF of retail leasable area, City Hyde Park is anchored by Whole Foods, Marshalls, Michaels and newly signed Athletico opening in June
- ▶ 14 story residential tower will boast 180 luxury units
- ▶ Development designed by the nationally renowned Studio Gang Architects and includes 2 levels of garage parking, street front retail and will connect to the 53rd Street Corridor through the newly redeveloped Harper Court Corridor
- ▶ City Hyde Park is well under construction and will deliver retail space in the first quarter of 2016
- ▶ Area co-tenants include LA Fitness, Chipotle, Starbucks, Ulta and Hyatt Place Hotel
- ▶ Area restaurants include A10, Yusho Hyde Park, Promontory and Giordano's
- ▶ Located across the street from the Metra Electric Line and multiple bus stops

- ▶ Close proximity to the University of Chicago and the top rated University of Chicago Medical Center as well as the recently announced Obama Presidential Library

Demographic Summary

	1 MI	3 MI	5 MI
Average HHI	\$76,388	\$52,786	\$52,787
Daytime Population	30,487	135,950	349,216
Residential Population	38,419	177,471	494,644



Doug Renner
312.275.3137
doug.renner@baumrealty.com

William Selonick
312.224.3211
wselonick@ngkf.com

Trevor Jack
312.275.3128
trevor@baumrealty.com





Obama Presidential Library rendering

Hyde Park

Hyde Park, long time home to the University of Chicago and its University of Chicago Medical Center, will become home to the Obama Presidential Library (OPL) in 2018. That is the big news, however, well prior to the recent announcement the market had already become dynamic. Over the past five years, it has added many national retailers, most notably Chipotle, Five Guys, LA Fitness and Akira. Their success has heightened recognition that Hyde Park is a dynamic and diverse market. In addition, and more recently Hyde Park has become a focus for full service restaurateurs and A10 and Yusho have opened to revenues levels well above those anticipated.

Harper Court, which opened in 2014, was the first large scale Hyde Park development in decades. That project includes office, retail, entertainment and hospitality uses. Most significant, its office component now houses 560 University of Chicago employees, providing a new and significant concentration of daytime population. City Hyde Park, slated for a Q2 2016 opening, will add both retail depth with Whole Foods, Marshalls and Michaels, and dense residential with its 180 apartment units. The combination of the two projects will intensify demand across all day parts connecting the center of the shopping experience in Hyde Park from 53rd Street to 51st Street.

Despite the quality of the recent activity, the opening of the Library will be an intense new driver of economic growth as its projected 800,000 tourists visit area shops, restaurants, hotels and entertainment spots. According to an independent study, OPL visitors will add \$31 million annually to food and beverage and other retail expenditures in proximate neighborhoods.

Even if it achieves its attendance projections, the OPL will still not be the largest area attraction: the Museum of Science and Industry, which hosts over 1.4 Million visitors annually, will likely retain that title. Synergies between the two and the jobs produced will strengthen the surrounding neighborhoods, increase disposable income and drive the next wave of development in Hyde Park.



Museum of Science & Industry



Harper Court

Doug Renner
312.275.3137
doug.renner@baumrealty.com

William Selonick
312.224.3211
wselonick@ngkf.com

Trevor Jack
312.275.3128
trevor@baumrealty.com



Site Plans

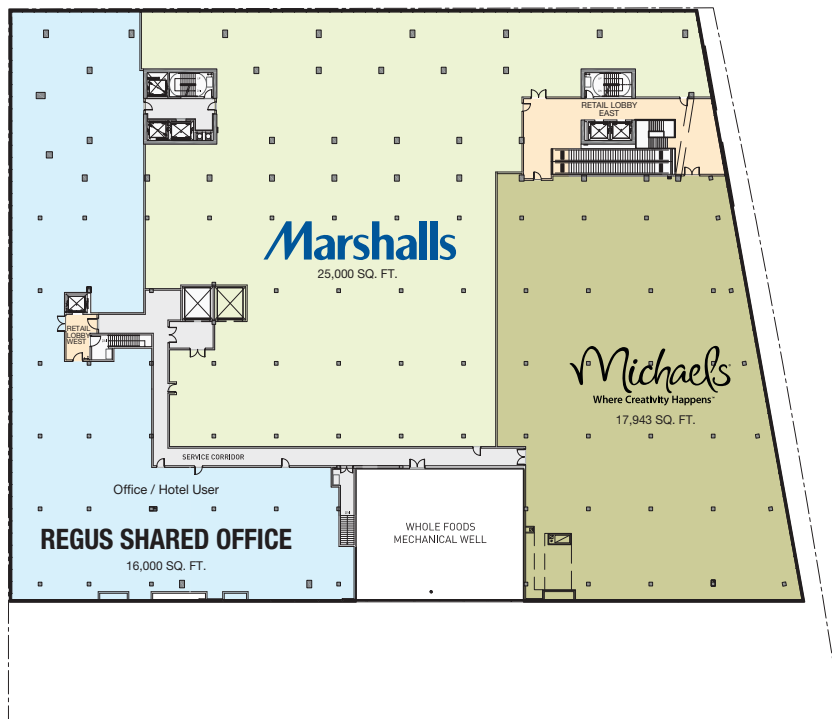


NOTE: RETAIL AREAS ARE MEASURED TO BOMA "STORE AREA" STANDARDS

retail:	49,102 SF.
retail common:	1,590 SF.
residential common:	2,629 SF.
service:	12,186 SF.
vertical opening:	2,019 SF.
gross area:	67,987 SF.

Up to ±7,000 SF contiguous

L1 PLAN



	RENTABLE SQ. FT.	% OF TOTAL
L1	49,267	44.6%
L2	61,121	55.4%
TOTAL	110,388	100.0%

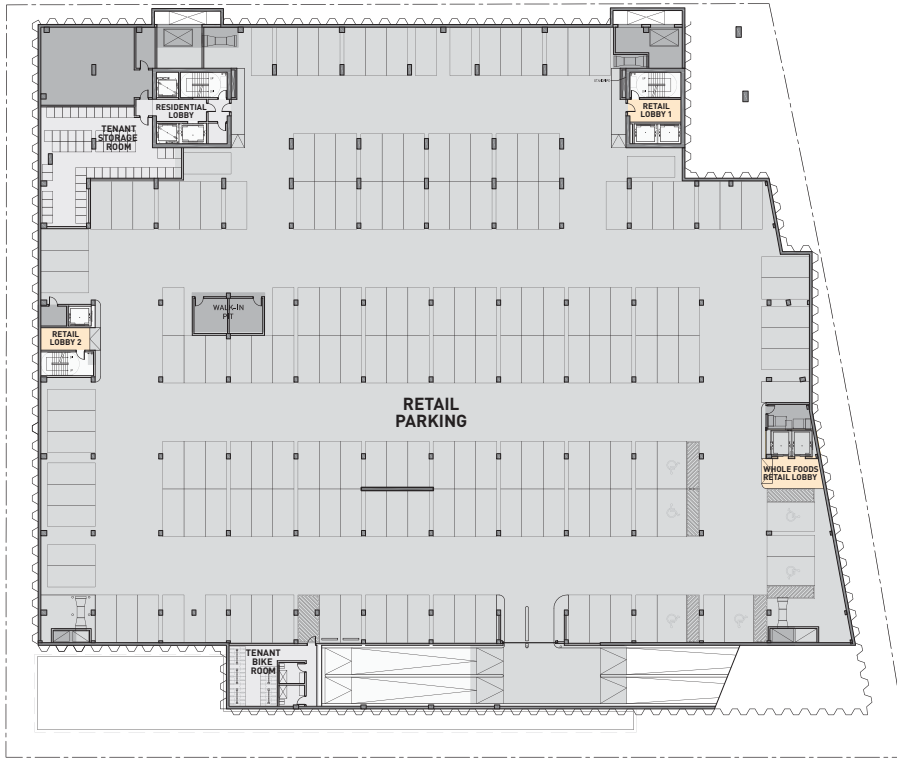
L2 PLAN

Doug Renner
312.275.3137
doug.renner@baumrealty.com

William Selonick
312.224.3211
wselonick@ngkf.com

Trevor Jack
312.275.3128
trevor@baumrealty.com





LL1 PLAN



LL2 PLAN

Doug Renner
 312.275.3137
 doug.renner@baumrealty.com

William Selonick
 312.224.3211
 wselonick@ngkf.com

Trevor Jack
 312.275.3128
 trevor@baumrealty.com





H CITY DE PARK

QUICK FACTS

180

Residential Units at
City Hyde Park

30,487

Daytime Population within 1 mile

34,000 Riders

Weekday Average (2014)
Metra Electric Line

800,000

Projected Annual Visitors to the
Obama Presidential Library

1.4 M

Annual Visitors to the Museum of
Science & Industry

Doug Renner

312.275.3137

doug.renner@baumrealty.com

William Selonick

312.224.3211

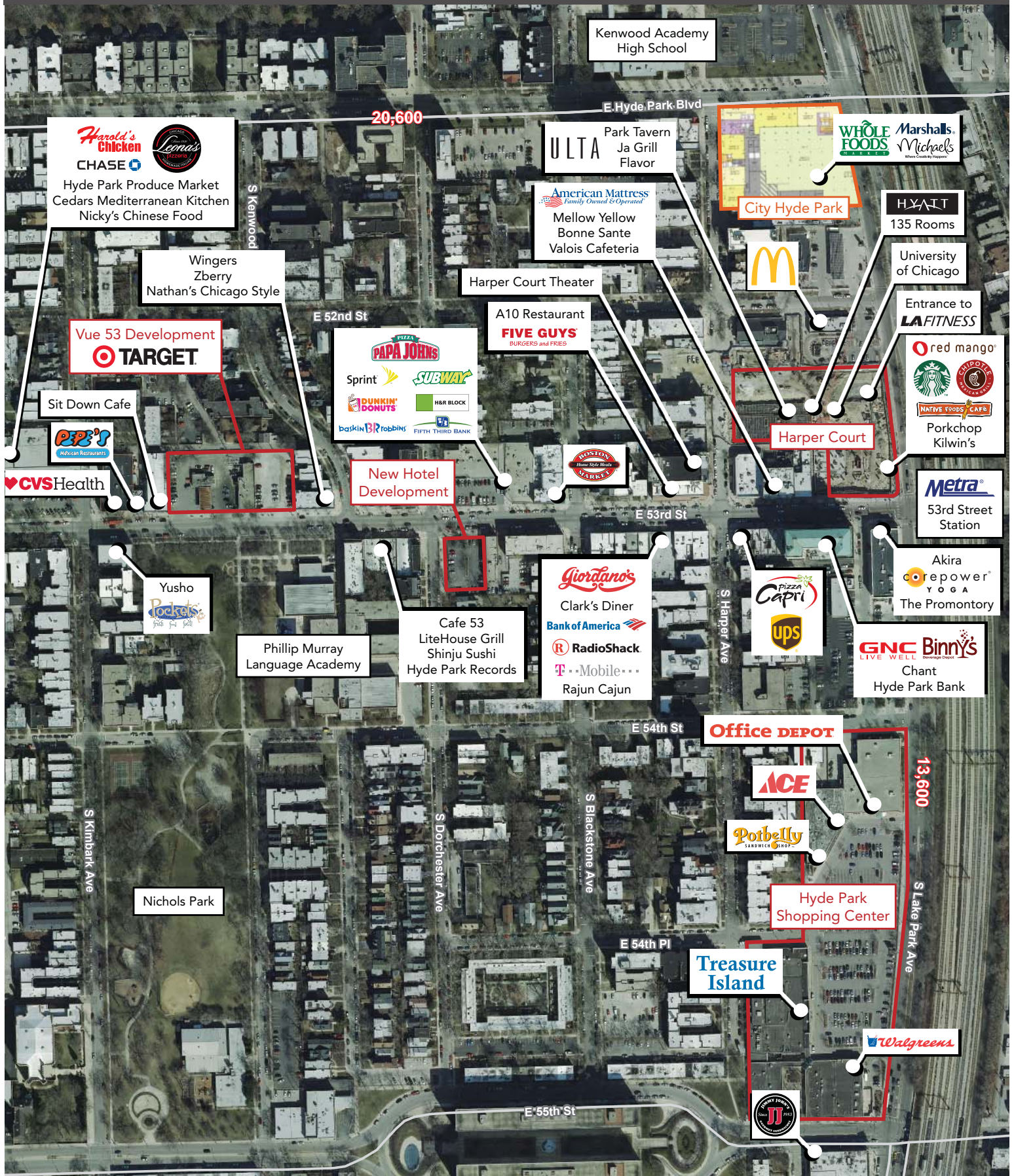
wselonick@ngkf.com

Trevor Jack

312.275.3128

trevor@baumrealty.com





Doug Renner
 312.275.3137
 doug.renner@baumrealty.com

William Selonick
 312.224.3211
 wselonick@ngkf.com

Trevor Jack
 312.275.3128
 trevor@baumrealty.com





Doug Renner

312.275.3137

doug.renner@baumrealty.com

William Selonick

312.224.3211

wselonick@ngkf.com

Trevor Jack

312.275.3128

trevor@baumrealty.com



© 2015 All information supplied is from sources deemed reliable and is furnished subject to errors, omissions, modifications, removal of the listing from sale or lease, and to any listing conditions, including the rates and manner of payment of commissions for particular offerings, the terms of which are available to principals or duly licensed brokers. This information may include estimates and projections with respect to future events, and these future events may or may not actually occur. Such estimates and projections reflect various assumptions concerning anticipated results. While we believe these assumptions are reasonable, there can be no assurance that any of these estimates and projections will prove to have been correct. Therefore, actual results may vary materially from these forward-thinking estimates and projections. Any square footage dimensions set forth are approximate.

