

# SEQ Aurora & Eola

AURORA, IL 60502

# Available

LAND



- ▶ 0.6 acre development land site for sale, ground lease, or build-to-suit
- ▶ Asking Price: Contact broker
- ▶ Jewel-Osco anchored outlet adjacent to new Jiffy Lube (coming soon) and new Primrose School
- ▶ Close to Metra Rail Station, Route 59, Stonebridge Country Club and more
- ▶ Zoning: B2 (S)
- ▶ Area retail includes Starbucks, Chipotle, Chase, GNC, BMO Harris Bank and more
- ▶ Strong average household income in surrounding area
- ▶ Utilities to the property line detention served off-site
- ▶ Located just northwest of the Fox Valley Mall trade area

Traffic Counts	N. Aurora Road	17,900 VPD
	Eola Road	37,800 VPD

DEMOGRAPHIC SUMMARY			
	1 Mi	3 Mi	5 Mi
Estimated Population	7,717	79,080	238,202
Adj. Daytime Population	7,526	89,400	257,700
Estimated Households	2,761	30,834	87,381
Estimated Average Household Income	\$194,988	\$140,624	\$137,906

## MIKE MEKSTO

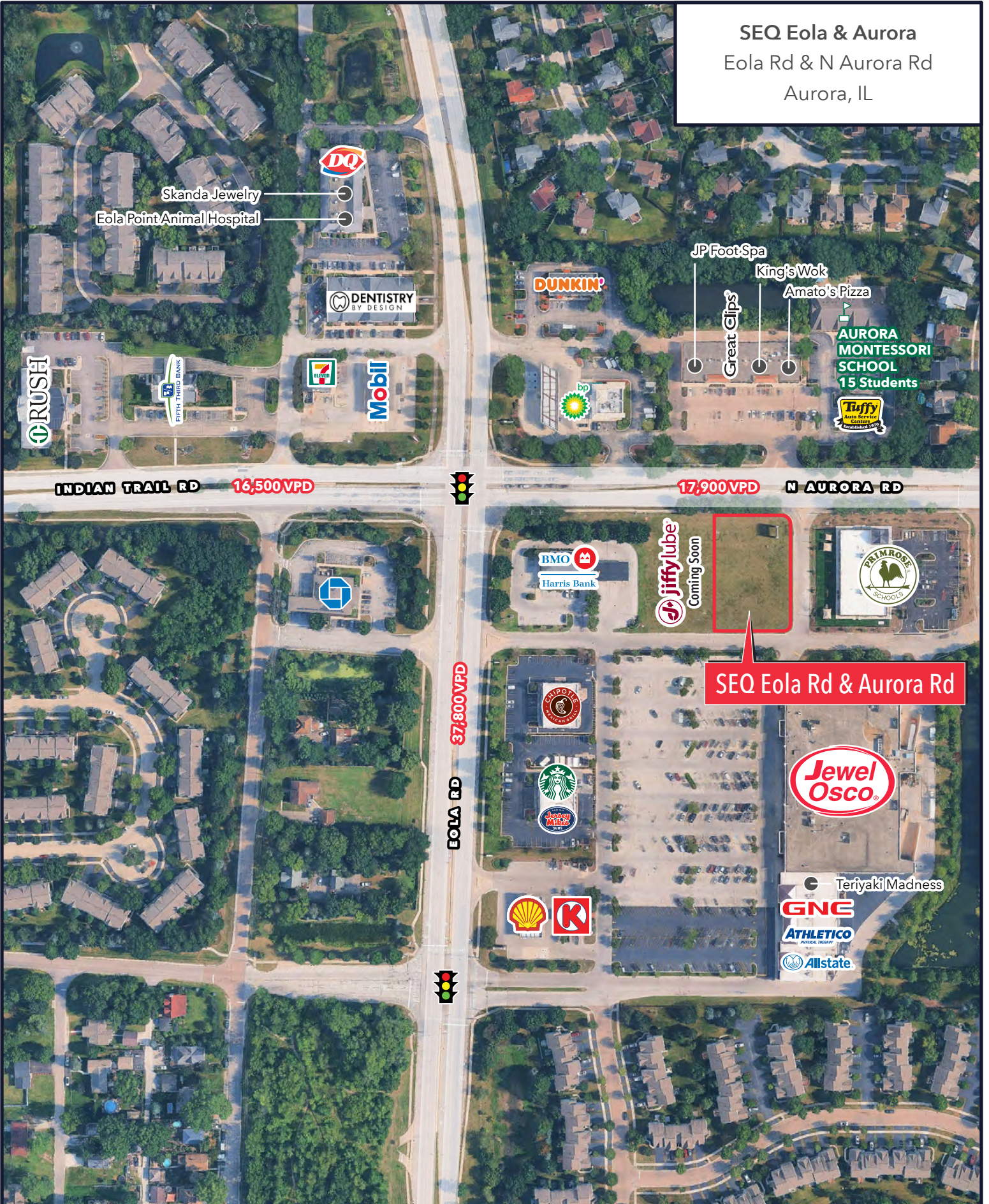
mmekesto@baumrealty.com  
312.275.3103



BAUM REALTY GROUP, LLC · 1030 W. CHICAGO AVENUE, SUITE 200 · CHICAGO, IL 60642 · 312.666.3000 · BAUMREALTY.COM

© 2026 All information supplied is from sources deemed reliable and is furnished subject to errors, omissions, modifications, removal of the listing from sale or lease, and to any listing conditions, including the rates and manner of payment of commissions for particular offerings, the terms of which are available to principals or duly licensed brokers. Any square footage dimensions set forth are approximate.

SEQ Eola & Aurora  
 Eola Rd & N Aurora Rd  
 Aurora, IL



SEQ Eola Rd & Aurora Rd