

1122-1126 W. Bryn Mawr Avenue

Chicago, IL 60660 | Edgewater

For Lease

Retail Property



- ▶ Up to ±4,875 SF with demising options available
- ▶ Black iron available
- ▶ Private parking optional
- ▶ Adjacent to the CTA Red Line Bryn Mawr 'L' Stop (1.58M Riders in 2017)
- ▶ Access to Lake Shore Drive directly to the east
- ▶ Just off the heavily trafficked Broadway / Ridge/ Bryn Mawr intersection (60,600 combined VPD)
- ▶ 1 mile south of Loyola University
- ▶ Nearby retailers include Walgreens, Starbucks, Dunkin' Donuts, Francesca's Restaurant, Chase & 7-Eleven

DEMOGRAPHICS

| | .25 MILE | .5 MILE | 1 MILE |
|------------------------------------|----------|----------|----------|
| Estimated Population | 9,029 | 26,694 | 71,568 |
| Adj. Daytime Demographics | 7,447 | 22,273 | 63,079 |
| Estimated Households | 5,280 | 15,223 | 38,164 |
| Estimated Average Household Income | \$63,586 | \$78,135 | \$80,000 |

DOUG RENNER

312.275.3137

doug.renner@baumrealty.com



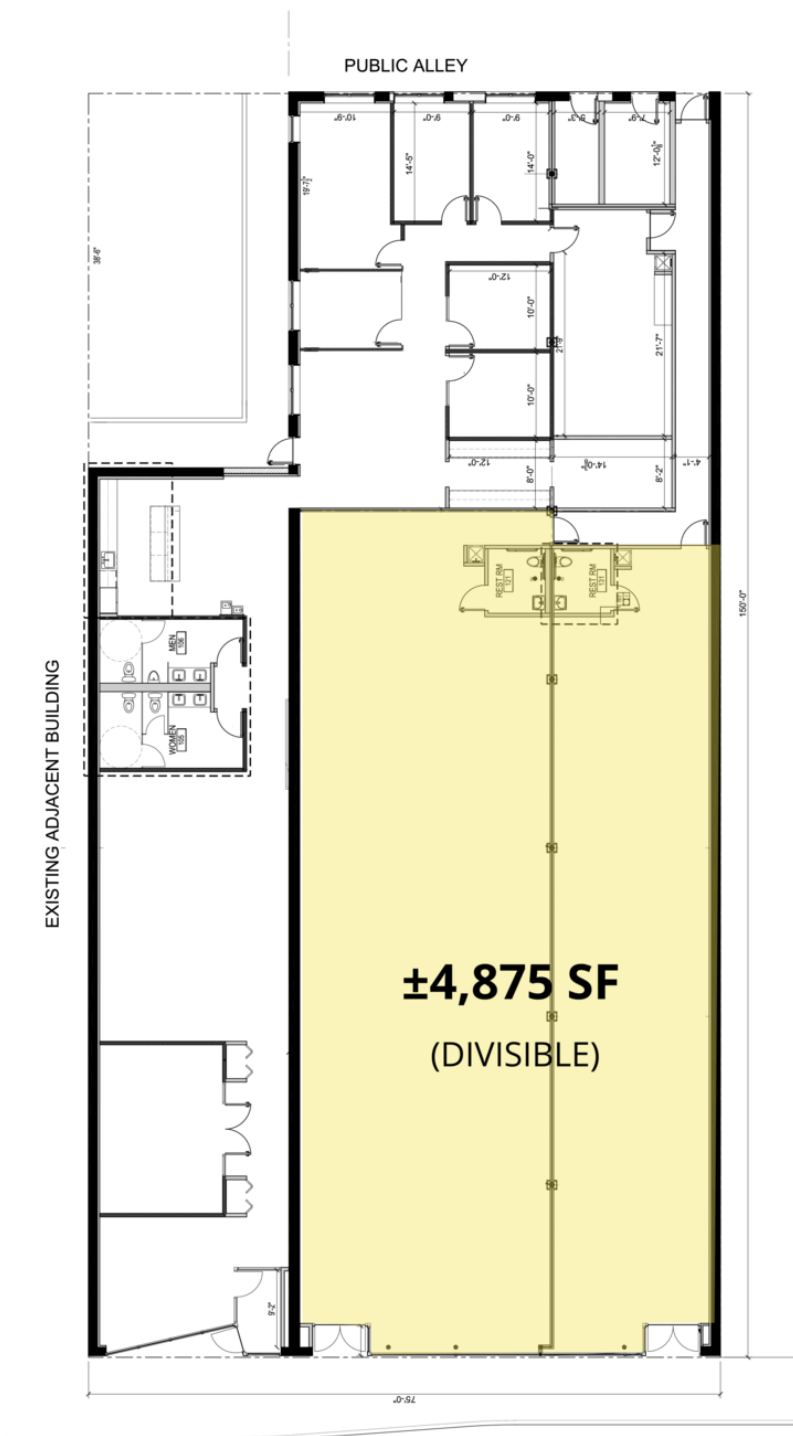
© 2020 All information supplied is from sources deemed reliable and is furnished subject to errors, omissions, modifications, removal of the listing from sale or lease, and to any listing conditions, including the rates and manner of payment of commissions for particular offerings, the terms of which are available to principals or duly licensed brokers. Any square footage dimensions set forth are approximate.

1122-1126 W. Bryn Mawr Avenue

Chicago, IL 60660 | Edgewater

For Lease

Retail Property



DOUG RENNER

312.275.3137

doug.renner@baumrealty.com



© 2020 All information supplied is from sources deemed reliable and is furnished subject to errors, omissions, modifications, removal of the listing from sale or lease, and to any listing conditions, including the rates and manner of payment of commissions for particular offerings, the terms of which are available to principals or duly licensed brokers. Any square footage dimensions set forth are approximate.

BAUM REALTY GROUP • 1030 W. CHICAGO AVENUE • CHICAGO, IL 60642 • 312.666.3000 • BAUMREALTY.COM

1122-1126 W. Bryn Mawr Avenue
Chicago, IL 60660



© 2020 All information supplied is from sources deemed reliable and is furnished subject to errors, omissions, modifications, removal of the listing from sale or lease, and to any listing conditions, including the rates and manner of payment of commissions for particular offerings, the terms of which are available to principals or duly licensed brokers. Any square footage dimensions set forth are approximate.

