

1200 N. Wells St

Chicago, IL 60610 | Old Town

For Lease

Retail Property



- ▶ ±1,600 SF available
- ▶ Excellent corner opportunity with frontage on both Wells & Division
- ▶ Located in the vibrant Old Town neighborhood
- ▶ Adjacent to Atrium Village, a new development with 1,500 residential units and 47,000 SF of retail
- ▶ Neighboring retailers include Plum Market, Happy Camper, Soul Cycle, PNC Bank, Intelligentsia, Starbucks, and more
- ▶ Broker Owned Property

DEMOGRAPHICS

	.25 MILE	.5 MILE	1 MILE
Estimated Population	10,474	38,039	87,863
Adj. Daytime Demographics	7,855	30,879	146,103
Estimated Households	7,185	23,662	54,847
Estimated Average Household Income	\$103,806	\$117,921	\$138,336

DOUG RENNER

312.275.3137
doug.renner@baumrealty.com

TREVOR JACK

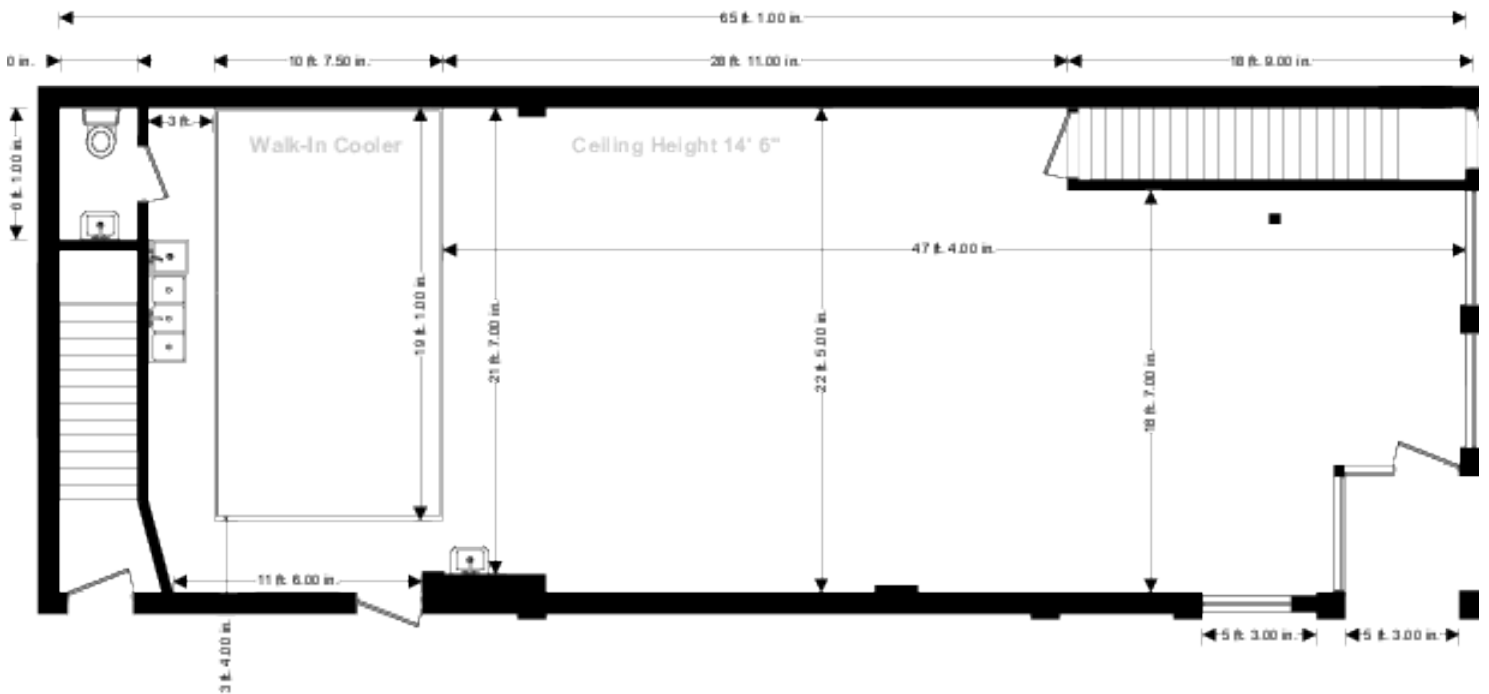
312.275.3128
trevor@baumrealty.com



© 2018 All information supplied is from sources deemed reliable and is furnished subject to errors, omissions, modifications, removal of the listing from sale or lease, and to any listing conditions, including the rates and manner of payment of commissions for particular offerings, the terms of which are available to principals or duly licensed brokers. Any square footage dimensions set forth are approximate.

1200 N. Wells St
Chicago, IL 60610 | Old Town

For Lease
Retail Property



W. DIVISION STREET

DOUG RENNER
312.275.3137
doug.renner@baumrealty.com

TREVOR JACK
312.275.3128
trevor@baumrealty.com



© 2018 All information supplied is from sources deemed reliable and is furnished subject to errors, omissions, modifications, removal of the listing from sale or lease, and to any listing conditions, including the rates and manner of payment of commissions for particular offerings, the terms of which are available to principals or duly licensed brokers. Any square footage dimensions set forth are approximate.

1200 N. Wells St
Chicago, IL 60610



Map data ©2019 Google Imagery ©2019 , DigitalGlobe, Sanborn, U.S. Geological Survey, USDA Farm Service Agency



© 2018 All information supplied is from sources deemed reliable and is furnished subject to errors, omissions, modifications, removal of the listing from sale or lease, and to any listing conditions, including the rates and manner of payment of commissions for particular offerings, the terms of which are available to principals or duly licensed brokers. Any square footage dimensions set forth are approximate.

