

**1749
N. DAMEN**

**PRIME BUCKTOWN
2ND FLOOR RETAIL SPACE**



CONCEPTUAL

For leasing information contact:

JANIKA BRENNER

312.275.3119

janika@baumrealty.com

ADAM SECHER

312.275.3130

adam@baumrealty.com

 **BAUM**
REALTY GROUP



DAMEN AVENUE CO-TENANCY

1749 N. Damen Avenue is located along Chicago's most dynamic retail corridor. Damen Avenue boasts a diverse mix of vintage shops, independently owned boutiques, nationally recognized designers, fashion industry icons and major retailers. Recent entries to the market include Stio, YellowKorner, Journelle, Bucketfeet, Flight001, Oak + Fort and TOMS.



1749 N. DAMEN AVENUE

PRIME 2ND FLOOR RETAIL SPACE ON DAMEN AVENUE

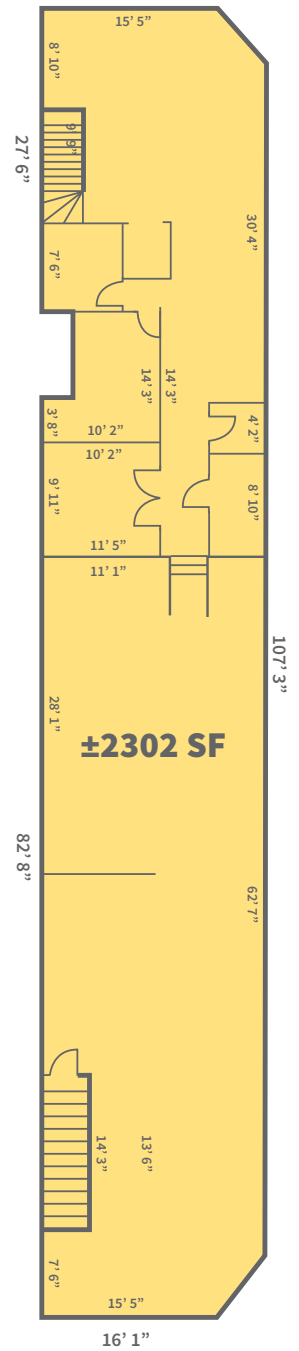
- › **2,302 SF 2nd floor retail space** available (not divisible) in Chicago's hottest retail neighborhood
- › Dedicated entrance
- › Ideal for a fitness user
- › Blade signage on Damen Avenue for maximum visibility
- › One block from The 606, Chicago's High Line trail

For more information contact:

JANIKA BRENNER
Principal
312.275.3119
janika@baumrealty.com

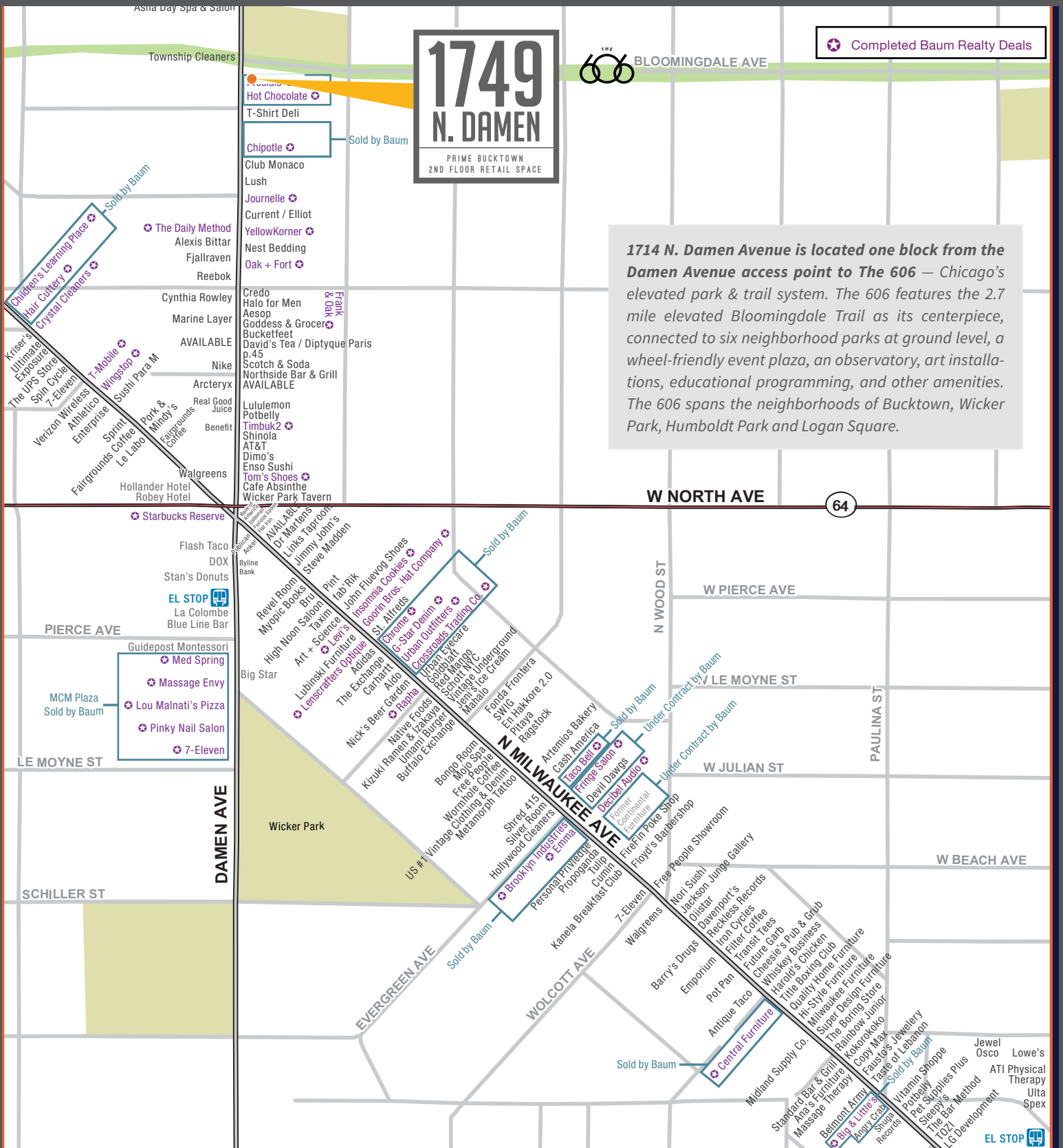
ADAM SECHER
Principal
312.275.3130
adam@baumrealty.com

DEMOGRAPHIC SUMMARY	0.25 MI	0.5 MI	1 MI
Average HHI	\$183,625	\$148,033	\$123,870
Daytime Population	2,318	11,698	35,059
Residential Population	3,808	16,488	54,953



N. DAMEN AVENUE





**1749
N. DAMEN**
PRIME BUCKTOWN
2ND FLOOR RETAIL SPACE

1714 N. Damen Avenue is located one block from the Damen Avenue access point to The 606 – Chicago's elevated park & trail system. The 606 features the 2.7 mile elevated Bloomingdale Trail as its centerpiece, connected to six neighborhood parks at ground level, a wheel-friendly event plaza, an observatory, art installations, educational programming, and other amenities. The 606 spans the neighborhoods of Bucktown, Wicker Park, Humboldt Park and Logan Square.

For more information contact:

JANIKA BRENNER 312.275.3119 janika@baumrealty.com
ADAM SECHER 312.275.3130 adam@baumrealty.com

© 2017 All information supplied is from sources deemed reliable and is furnished subject to errors, omissions, modifications, removal of the listing from sale or lease, and to any listing conditions, including the rates and manner of payment of commissions for particular offerings, the terms of which are available to principals or duly licensed brokers. This information may include estimates and projections with respect to future events, and these future events may or may not actually occur. Such estimates and projections reflect various assumptions concerning anticipated results. While we believe these assumptions are reasonable, there can be no assurance that any of these estimates and projections will prove to have been correct. Therefore, actual results may vary materially from these forward-thinking estimates and projections. Any square footage dimensions set forth are approximate.

