

For Sale



1750 N. Springfield

Ari Topper, CFA
312.275.3113 · ari@baumrealty.com

Tyler Dechter
312.275.3132 · tyler@baumrealty.com

Owen Wiesner
312.275.3119 · owen@baumrealty.com



BAUMREALTY.COM

FOR SALE

1750 N. Springfield

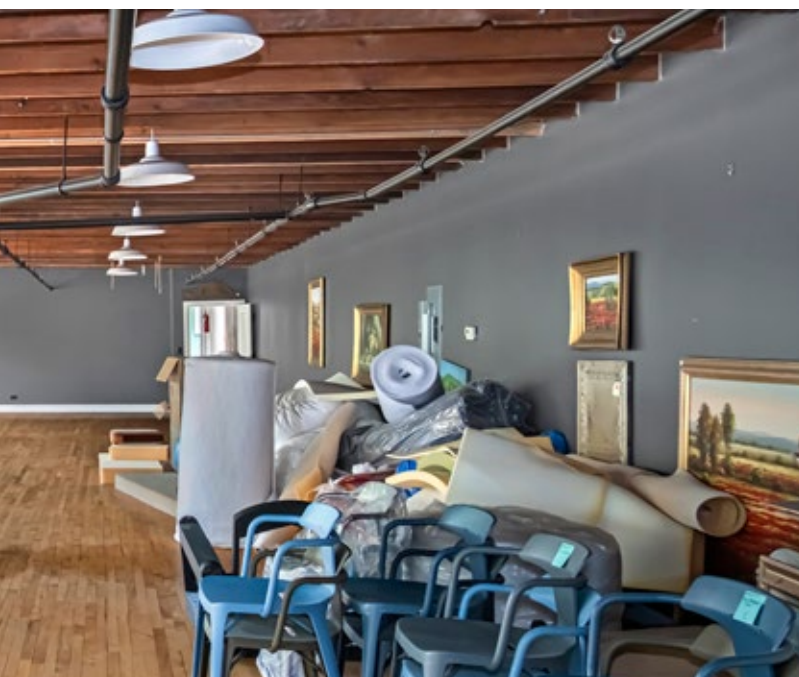
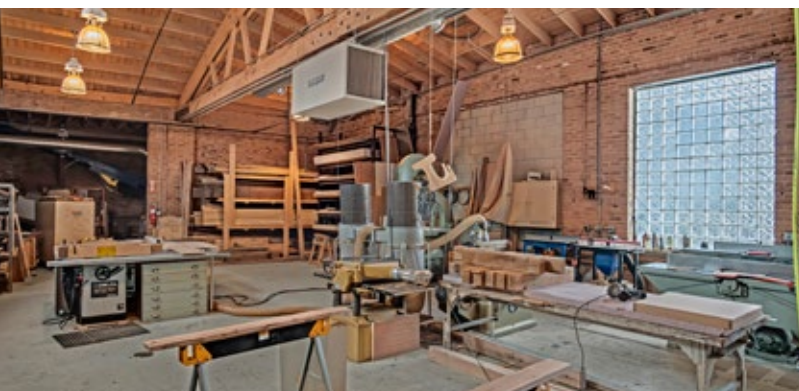
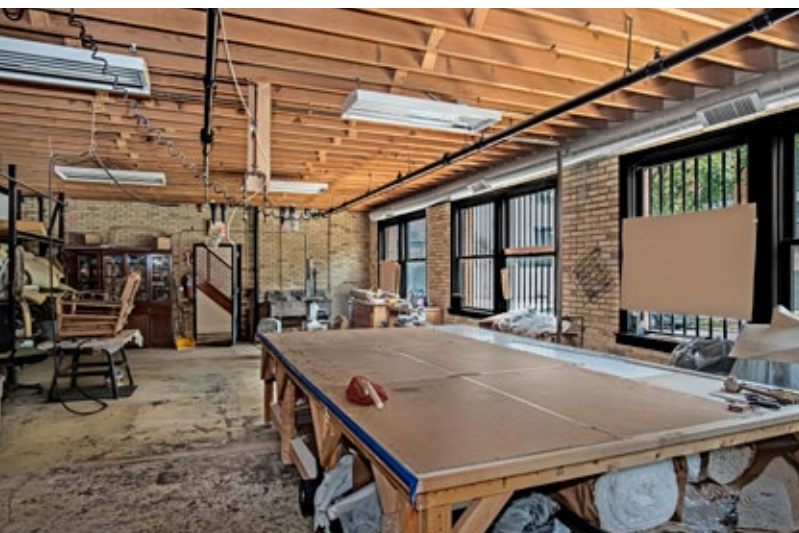
*Showroom / Manufacturing /
Warehouse Facility*

Baum Realty Group, LLC has been exclusively retained to offer for sale 1750 N. Springfield Avenue, a 33,203 square foot industrial building on the north side of Chicago at the intersection of the Humboldt Park, Logan Square and Hermosa neighborhoods (the "Property").

Currently improved as a showroom and light manufacturing facility, the Property is beautifully appointed with high-end finishes, including modern bathrooms, concrete floors and oversized skylights providing abundant natural light throughout the building.

The building is fully climate controlled and consists of four (4) interconnected barrel truss bays with minimal columns, providing tons of operational flexibility. Located adjacent to the western trail head of The 606, the Property also includes a separate 6,000 SF gated parking lot able to accommodate 25+ vehicles.





Flexible & creative work environment

- Workshop and showroom space with abundant natural light, exposed brick and high-end finishes throughout
- Barrel truss building with minimal columns provides flexible and creative work environment
- Convenient northwest side location at the nexus of the Logan Square, Hermosa, and Humboldt Park neighborhoods
- Adjacent to The 606's western trail head
- Fully air-conditioned building
- Private parking lot for 25+ vehicles

Building Size: 33,203 SF

Ceiling Heights: 12' to low point of beam & 18' to trusses

Loading: Two (2) 12' overhead doors

Power: 1600 AMP / 3 Phase

Zoning: M1-1

2021 RE Taxes: \$39,345

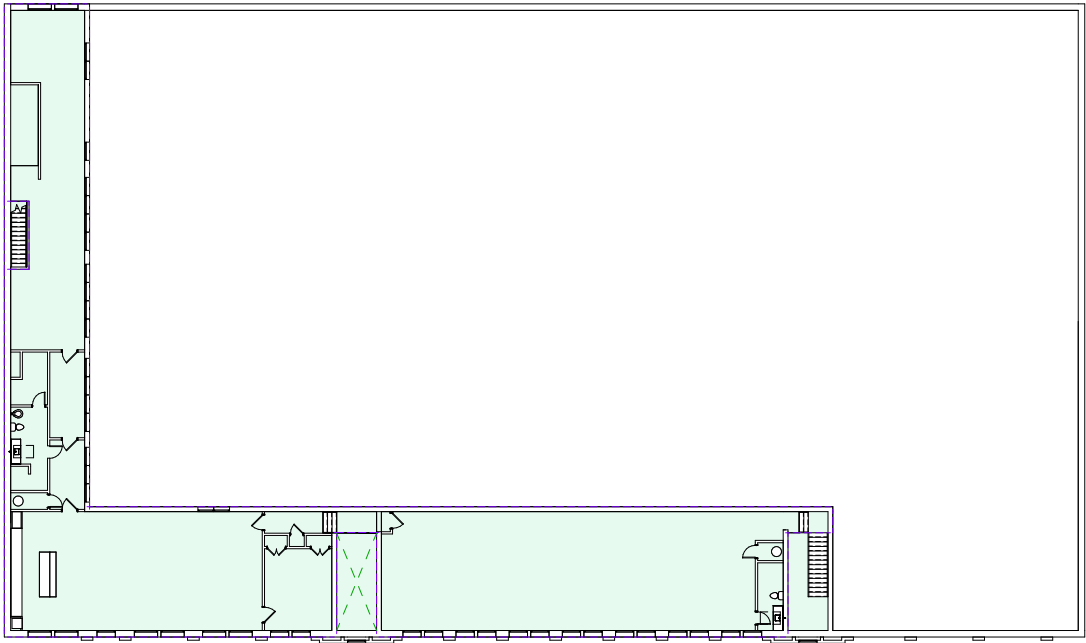
Sale Price: Subject to Offer

Floor Plan

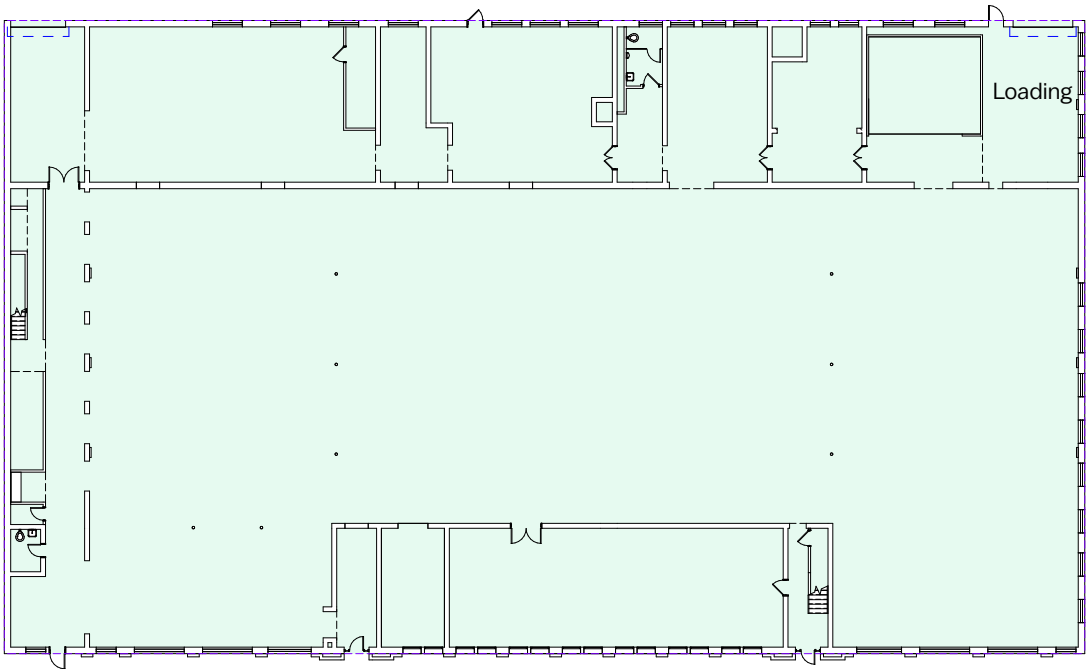
Entire Building
33,203 SF



Scan or click
for survey



Second Floor - 5,649 SF



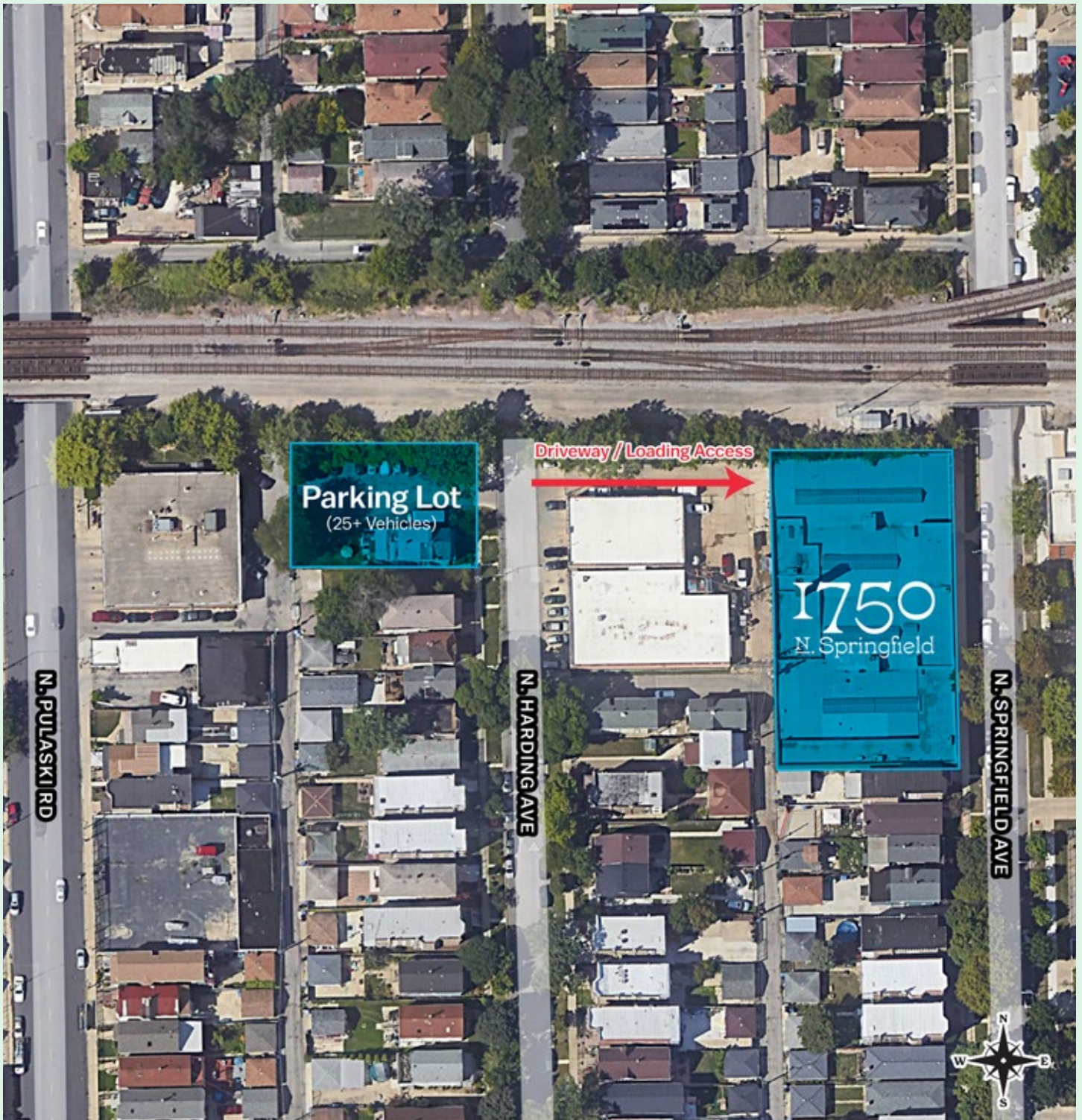
Springfield Avenue



Ground Floor - 27,554 SF

1750 N. Springfield Avenue

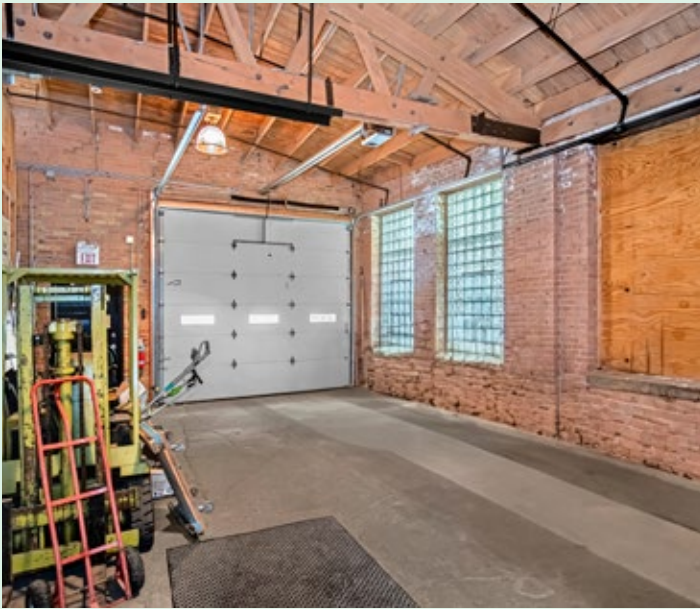
Private Parking Lot



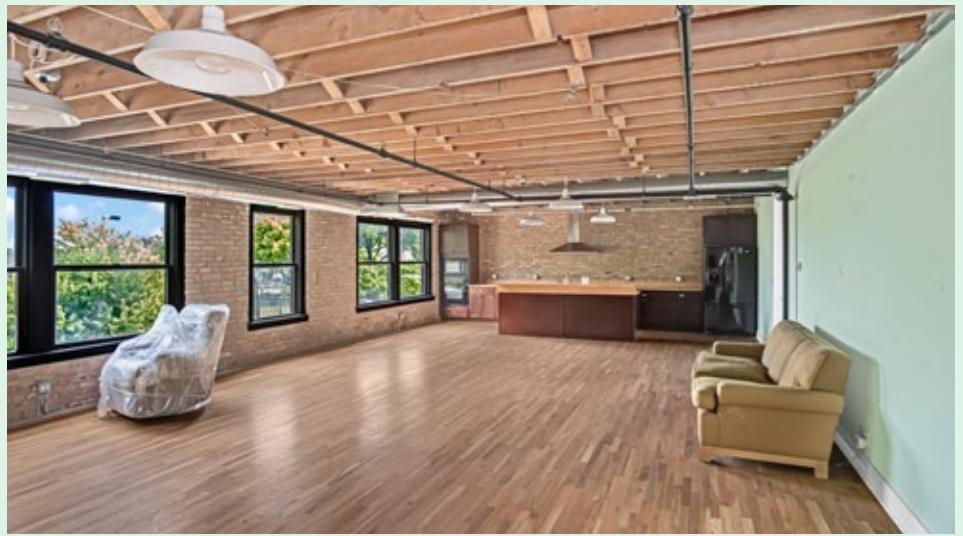
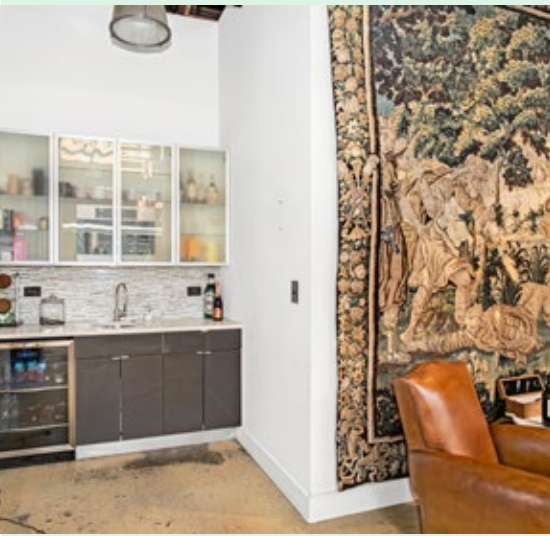


Showroom / Manufacturing / Warehouse Facility





Interior Photos



Notable Neighbors

Giant › Damn Fine Coffee Bar › **The 606** › Scofflaw › Ground Control › Xurro
Pipeworks Brewing Company › Rosa's Lounge › **Ørkenoy** › Pizza Matta
Parson's › Dayglow › **Tasa Coffee Roasters** › Solemn Oath › ArePA George
Barracks Boxing › Weegee's › Lonesome Rose › Zoku › Grandma Annie's
Bungalow by Middlebrow › **The Moonlighter** › Best Intentions...and more!



› Giant



› The 606 (west trail head)



› Ørkenoy



› Parson's



› Tasa Coffee Roasters



› The Moonlighter

Northwest Side Location



The 606

2.7 mile elevated trail system connecting Chicago's Wicker Park, Bucktown, Humboldt Park, and Logan Square.

Great Neighbors

Located at the nexus of Chicago's Logan Square, Hermosa, and Humboldt Park neighborhoods

Easy Access

Nearby transit includes 3 CTA bus routes, Metra (MD-N), and CTA Blue Line and 8-15 minutes to I-90/94

For Sale



1750 N. Springfield

Contact:

Ari Topper, CFA
312.275.3113 · ari@baumrealty.com

Tyler Dechter
312.275.3132 · tyler@baumrealty.com

Owen Wiesner
312.275.3119 · owen@baumrealty.com



[BAUMREALTY.COM](https://baumrealty.com)

© 2024 All information supplied is from sources deemed reliable and is furnished subject to errors, omissions, modifications, removal of the listing from sale or lease, and to any listing conditions, including the rates and manner of payment of commissions for particular offerings, the terms of which are available to principals or duly licensed brokers. This information may include estimates and projections with respect to future events, and these future events may or may not actually occur. Such estimates and projections reflect various assumptions concerning anticipated results. While we believe these assumptions are reasonable, there can be no assurance that any of these estimates and projections will prove to have been correct. Therefore, actual results may vary materially from these forward-thinking estimates and projections. Any square footage dimensions set forth are approximate.