

# 3333 W. Lake Street

CHICAGO, IL 60624 | EAST GARFIELD PARK

## For Lease

INDUSTRIAL & OFFICE SPACE



### BUILDING INFORMATION

<b>AVAILABLE SPACE:</b>	49,200 SF
<b>FLOOR 1:</b>	26,000 SF - Industrial / Warehouse / Garage
<b>FLOOR 2:</b>	23,200 SF - Office / Flex
<b>LEASE RATE:</b>	\$7 NNN
<b>ZONING:</b>	M1-3
<b>CEILING HEIGHTS:</b>	14'+
<b>PARKING:</b>	60 spaces (gated and secured)
<b>LOADING:</b>	4 drive-in doors (able to convert 1 to a truck level dock)

### SITE HIGHLIGHTS

- ▶ Former vehicle fleet storage & training facility available for lease
- ▶ Private, secured parking lot with parking for up to 60 vehicles
- ▶ Located in Enterprise Zone #5, tenants are eligible for Enterprise Zone tax incentives including sales tax exemption & investment tax credits among other benefits
- ▶ Desirable location in rapidly growing East Garfield Park, just west of Chicago's booming Fulton Market neighborhood
- ▶ Outstanding expressway and public transportation access;
  - Easy access to I-290 from Homan Avenue
  - 4 minute walk to the Kedzie Green Line CTA 'L' Station
  - 10 minute walk to Kedzie Metra station

**ARI TOPPER, CFA**  
ari@baumrealty.com  
312.275.3113

**TYLER DECHTER**  
312.275.3132  
tyler@baumrealty.com



© 2024 All information supplied is from sources deemed reliable and is furnished subject to errors, omissions, modifications, removal of the listing from sale or lease, and to any listing conditions, including the rates and manner of payment of commissions for particular offerings, the terms of which are available to principals or duly licensed brokers. This information may include estimates and projections with respect to future events, and these future events may or may not actually occur. Such estimates and projections reflect various assumptions concerning anticipated results. While we believe these assumptions are reasonable, there can be no assurance that any of these estimates and projections will prove to have been correct. Therefore, actual results may vary materially from these forward-thinking estimates and projections. Any square footage dimensions set forth are approximate.



# 3333 W. Lake Street

CHICAGO, IL 60624 | EAST GARFIELD PARK

## For Lease

INDUSTRIAL & OFFICE SPACE

### EXTERIOR PHOTOS



**ARI TOPPER, CFA**  
ari@baumrealty.com  
312.275.3113

**TYLER DECHTER**  
312.275.3132  
tyler@baumrealty.com



© 2024 All information supplied is from sources deemed reliable and is furnished subject to errors, omissions, modifications, removal of the listing from sale or lease, and to any listing conditions, including the rates and manner of payment of commissions for particular offerings, the terms of which are available to principals or duly licensed brokers. This information may include estimates and projections with respect to future events, and these future events may or may not actually occur. Such estimates and projections reflect various assumptions concerning anticipated results. While we believe these assumptions are reasonable, there can be no assurance that any of these estimates and projections will prove to have been correct. Therefore, actual results may vary materially from these forward-thinking estimates and projections. Any square footage dimensions set forth are approximate.



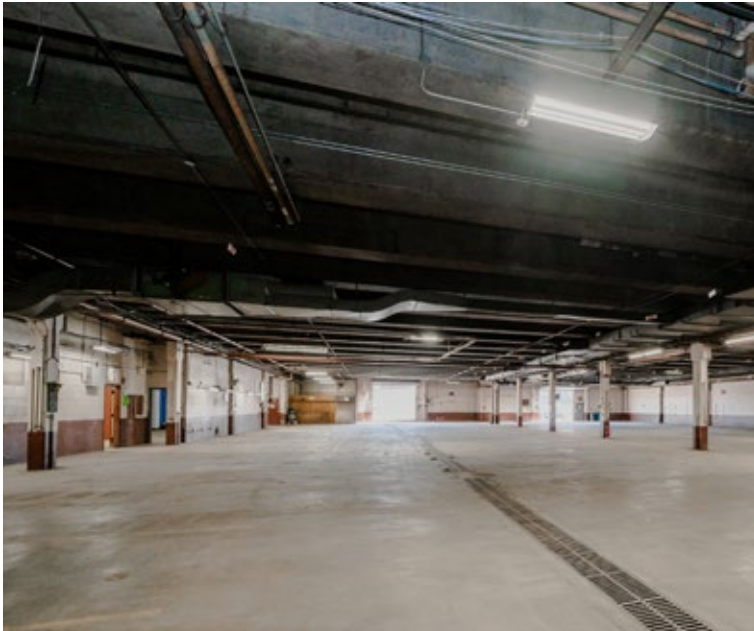
# 3333 W. Lake Street

CHICAGO, IL 60624 | EAST GARFIELD PARK

## For Lease

INDUSTRIAL & OFFICE SPACE

### FIRST FLOOR



**ARI TOPPER, CFA**  
ari@baumrealty.com  
312.275.3113

**TYLER DECHTER**  
312.275.3132  
tyler@baumrealty.com



© 2024 All information supplied is from sources deemed reliable and is furnished subject to errors, omissions, modifications, removal of the listing from sale or lease, and to any listing conditions, including the rates and manner of payment of commissions for particular offerings, the terms of which are available to principals or duly licensed brokers. This information may include estimates and projections with respect to future events, and these future events may or may not actually occur. Such estimates and projections reflect various assumptions concerning anticipated results. While we believe these assumptions are reasonable, there can be no assurance that any of these estimates and projections will prove to have been correct. Therefore, actual results may vary materially from these forward-thinking estimates and projections. Any square footage dimensions set forth are approximate.

# 3333 W. Lake Street

CHICAGO, IL 60624 | EAST GARFIELD PARK

## For Lease

INDUSTRIAL & OFFICE SPACE

SECOND FLOOR



**ARI TOPPER, CFA**  
ari@baumrealty.com  
312.275.3113

**TYLER DECHTER**  
312.275.3132  
tyler@baumrealty.com



© 2024 All information supplied is from sources deemed reliable and is furnished subject to errors, omissions, modifications, removal of the listing from sale or lease, and to any listing conditions, including the rates and manner of payment of commissions for particular offerings, the terms of which are available to principals or duly licensed brokers. This information may include estimates and projections with respect to future events, and these future events may or may not actually occur. Such estimates and projections reflect various assumptions concerning anticipated results. While we believe these assumptions are reasonable, there can be no assurance that any of these estimates and projections will prove to have been correct. Therefore, actual results may vary materially from these forward-thinking estimates and projections. Any square footage dimensions set forth are approximate.



# 3333 W. Lake Street

CHICAGO, IL 60624 | EAST GARFIELD PARK

## For Lease

INDUSTRIAL & OFFICE SPACE

RENDERING OF NEW ENTRY FACADE WITH  
ELEVATOR (ESTIMATED DELIVERY Q4 '22)



### SITE PLAN



**ARI TOPPER, CFA**  
ari@baumrealty.com  
312.275.3113

**TYLER DECHTER**  
312.275.3132  
tyler@baumrealty.com



© 2024 All information supplied is from sources deemed reliable and is furnished subject to errors, omissions, modifications, removal of the listing from sale or lease, and to any listing conditions, including the rates and manner of payment of commissions for particular offerings, the terms of which are available to principals or duly licensed brokers. This information may include estimates and projections with respect to future events, and these future events may or may not actually occur. Such estimates and projections reflect various assumptions concerning anticipated results. While we believe these assumptions are reasonable, there can be no assurance that any of these estimates and projections will prove to have been correct. Therefore, actual results may vary materially from these forward-thinking estimates and projections. Any square footage dimensions set forth are approximate.

# 3333 W. Lake Street

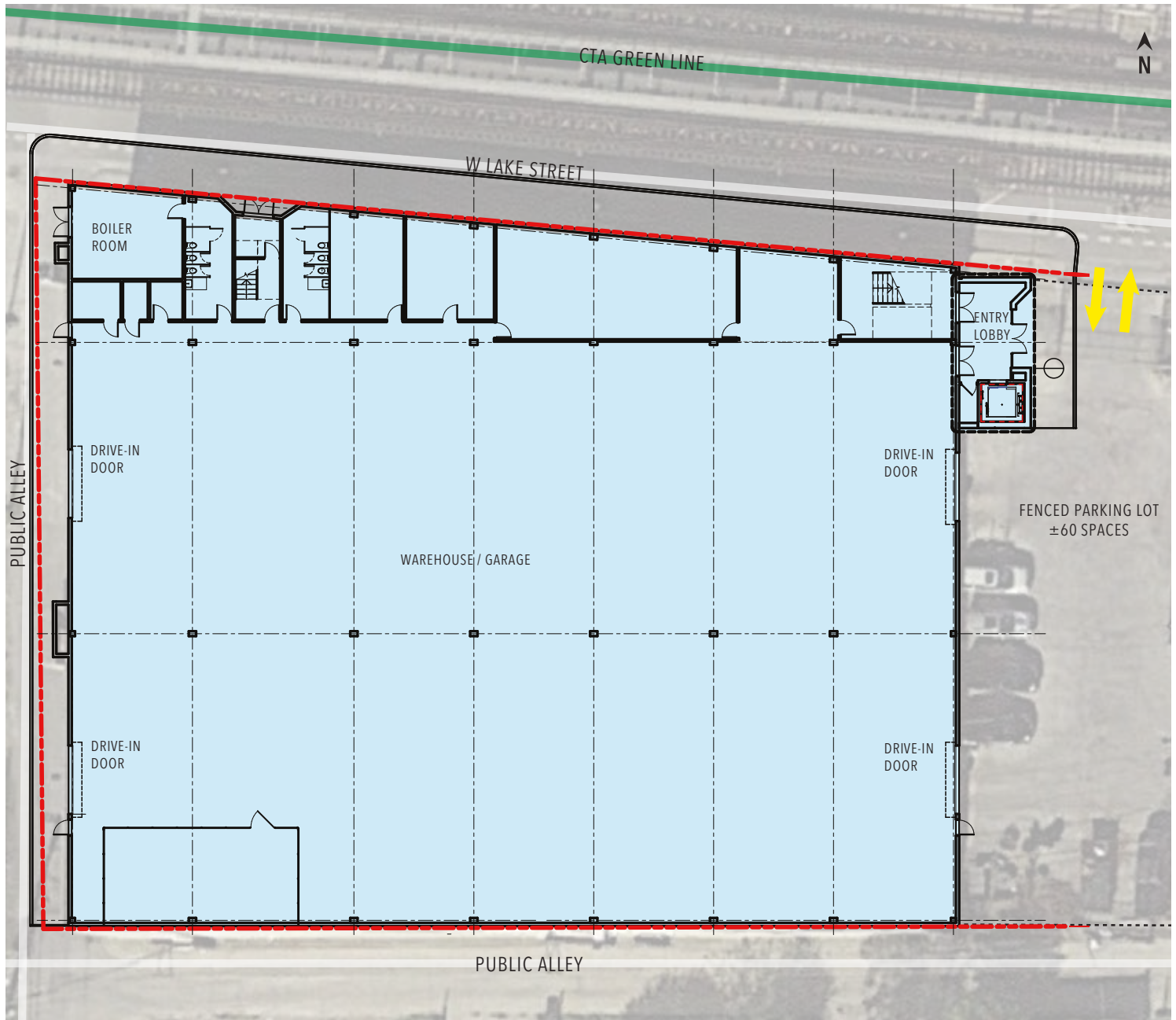
CHICAGO, IL 60624 | EAST GARFIELD PARK

## For Lease

INDUSTRIAL & OFFICE SPACE

### FIRST FLOOR – 26,000 SF INDUSTRIAL / WAREHOUSE / GARAGE

- ▶ Full drive thru capability
- ▶ 2 bathrooms sets & ancillary office / training space
- ▶ Heated garage with trench drains & repair bay
- ▶ Ability to add truck-level loading dock



**ARI TOPPER, CFA**  
ari@baumrealty.com  
312.275.3113

**TYLER DECHTER**  
312.275.3132  
tyler@baumrealty.com



© 2024 All information supplied is from sources deemed reliable and is furnished subject to errors, omissions, modifications, removal of the listing from sale or lease, and to any listing conditions, including the rates and manner of payment of commissions for particular offerings, the terms of which are available to principals or duly licensed brokers. This information may include estimates and projections with respect to future events, and these future events may or may not actually occur. Such estimates and projections reflect various assumptions concerning anticipated results. While we believe these assumptions are reasonable, there can be no assurance that any of these estimates and projections will prove to have been correct. Therefore, actual results may vary materially from these forward-thinking estimates and projections. Any square footage dimensions set forth are approximate.



# 3333 W. Lake Street

CHICAGO, IL 60624 | EAST GARFIELD PARK

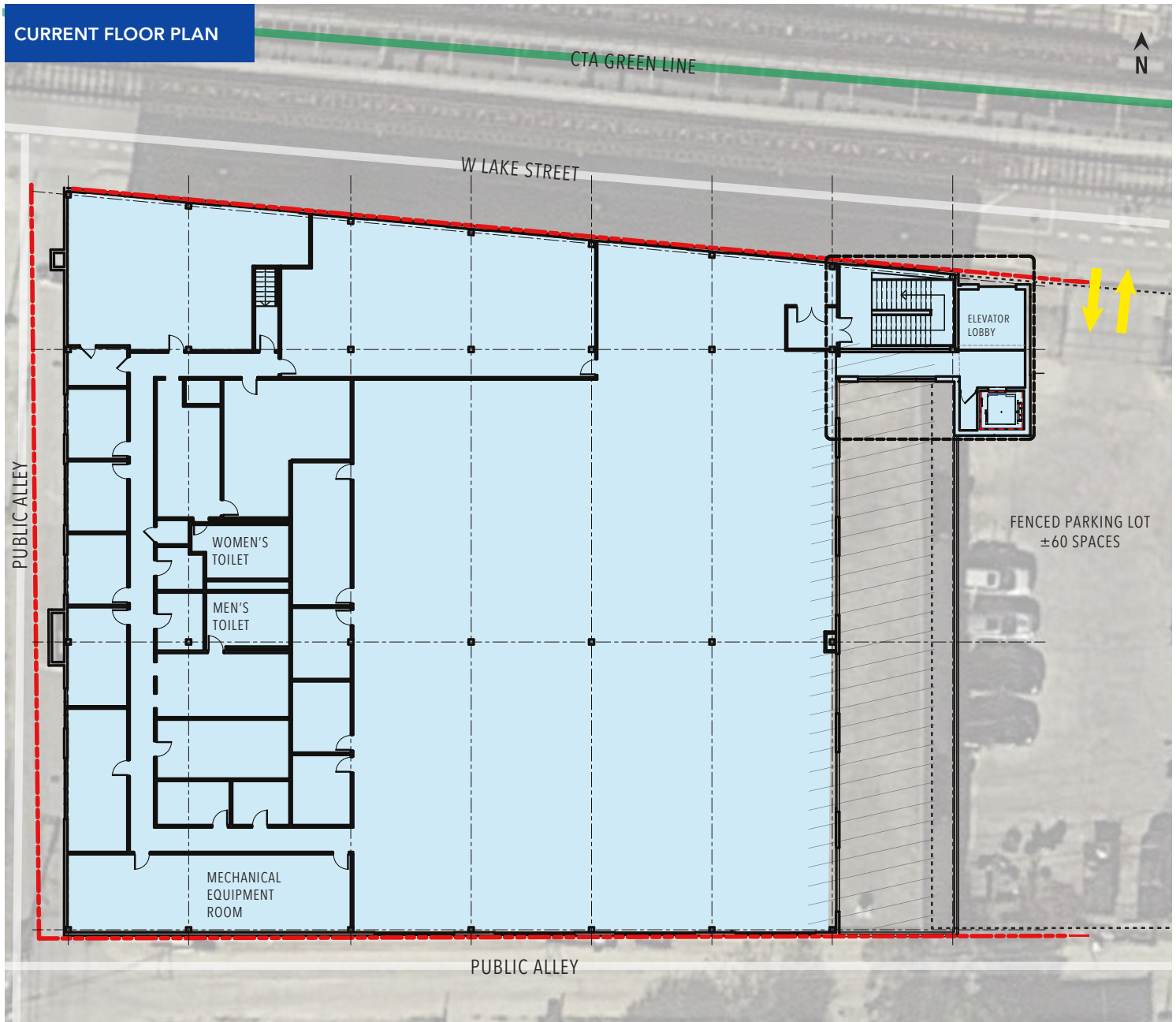
## For Lease

INDUSTRIAL & OFFICE SPACE

### CURRENT SECOND FLOOR PLAN – 23,200 SF OFFICE / INDUSTRIAL

- ▶ Suitable for office or light manufacturing / fabrication
- ▶ Abundant on site, secured parking available
- ▶ Eastern skyline views
- ▶ Potential for roof deck / outdoor terrace

#### CURRENT FLOOR PLAN



**ARI TOPPER, CFA**  
ari@baumrealty.com  
312.275.3113

**TYLER DECHTER**  
312.275.3132  
tyler@baumrealty.com



© 2024 All information supplied is from sources deemed reliable and is furnished subject to errors, omissions, modifications, removal of the listing from sale or lease, and to any listing conditions, including the rates and manner of payment of commissions for particular offerings, the terms of which are available to principals or duly licensed brokers. This information may include estimates and projections with respect to future events, and these future events may or may not actually occur. Such estimates and projections reflect various assumptions concerning anticipated results. While we believe these assumptions are reasonable, there can be no assurance that any of these estimates and projections will prove to have been correct. Therefore, actual results may vary materially from these forward-thinking estimates and projections. Any square footage dimensions set forth are approximate.



3333 W. Lake Street  
Chicago, IL

