

OneTen

EAST PEARSON

*Magnificent Mile
Flagship
Opportunity*

GOLD COAST // CHICAGO



 BAUM
REALTY GROUP

OWNED BY

 STERLING
ORGANIZATION

The Magnificent Mile

One of the most vibrant and successful commercial, residential, cultural and tourist destinations in the world.

North Michigan Avenue, known as The Magnificent Mile, is an unparalleled, mixed-use district located just north of downtown Chicago.

The Magnificent Mile and the surrounding Gold Coast neighborhood benefit from a unique mix of premier retailers, individual boutiques, and distinctive restaurants coupled with popular attractions, world-class and award-winning hotels, beautiful residences, landmark architecture and prestigious education & medical facilities.



FOR MORE INFORMATION CONTACT

Allen Joffe

312.275.3120 // allen@baumrealty.com

Doug Renner

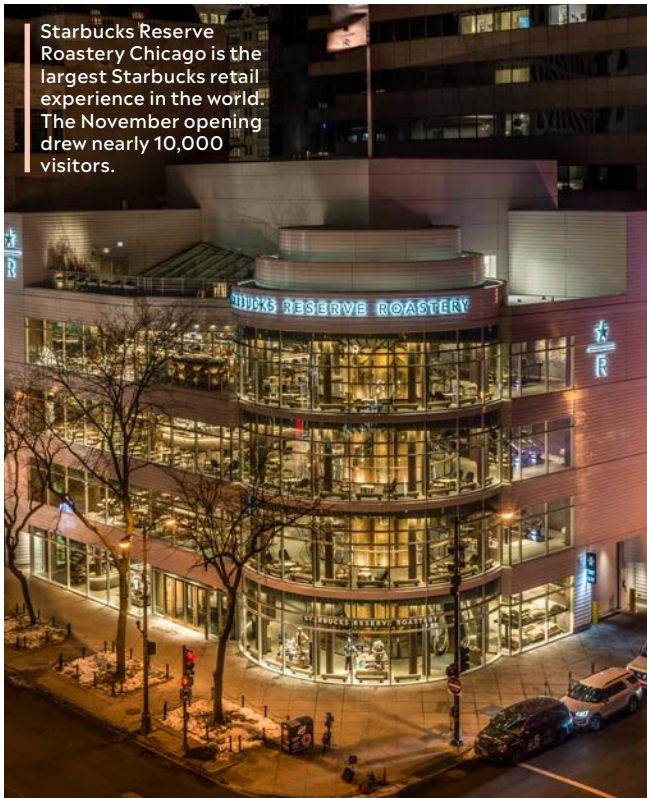
312.275.3137 // doug.renner@baumrealty.com

Nicole Cardot

312.275.0371 // nicole@baumrealty.com



Apple's Michigan Avenue flagship experience is designed to minimize the boundary between the city and the Chicago River.



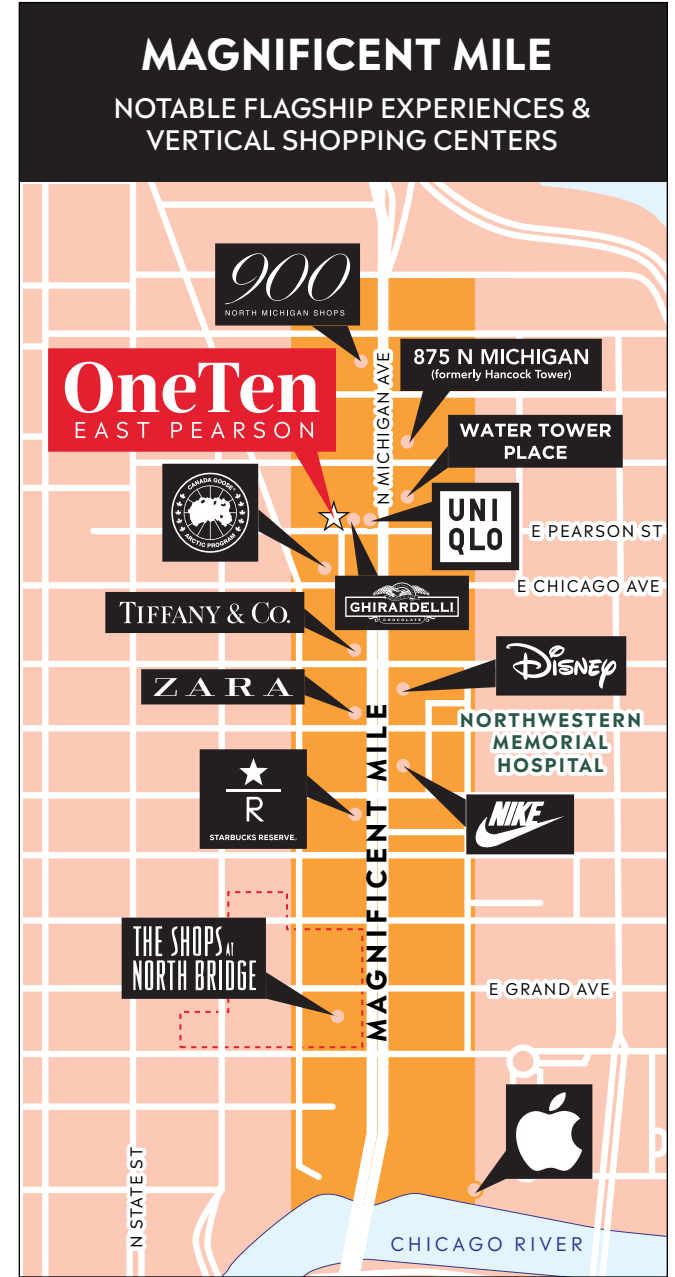
Starbucks Reserve Roastery Chicago is the largest Starbucks retail experience in the world. The November opening drew nearly 10,000 visitors.

FLAGSHIP RETAIL EXPERIENCES

Impressive store facades, unique merchandise and immersive retail environments are found at more than 50 flagship retailers and brand houses, in addition to new store openings all the time. Notable flagships include Apple Michigan Avenue and Starbucks Reserve Roastery, a 5-story multi-sensory destination that opened November 2019.

VERTICAL SHOPPING CENTERS

The Mag. Mile is anchored by three major shopping centers, each with a blend of luxury brands and local boutiques. The 900 North Michigan Shops, Water Tower Place, and The Shops at North Bridge which has expanded to encompass a six-block district. All three shopping centers are anchored by major department stores and have undergone extensive renovations in recent years.



FOR MORE INFORMATION CONTACT

Allen Joffe

312.275.3120 // allen@baumrealty.com

Doug Renner

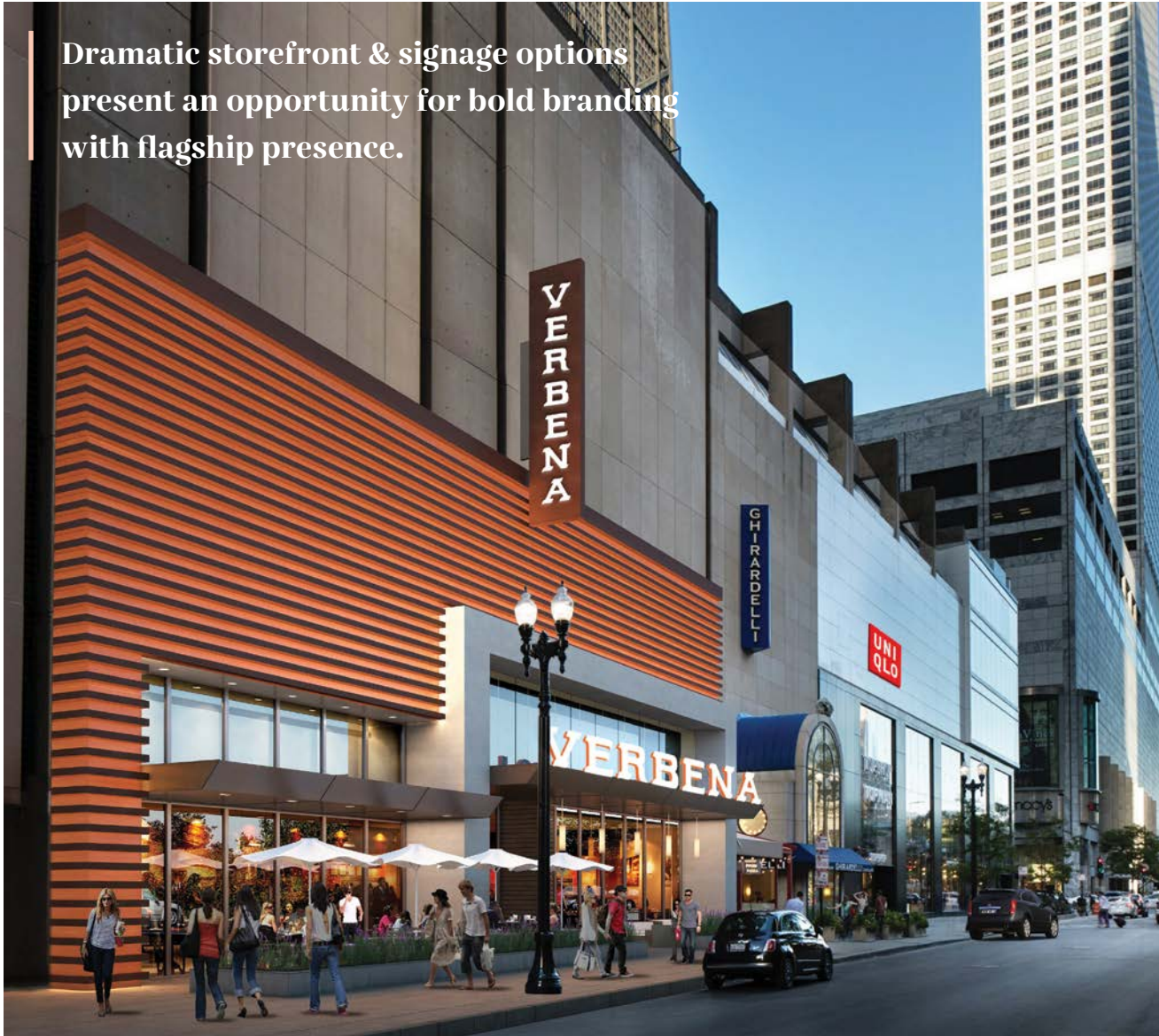
312.275.3137 // doug.renner@baumrealty.com

Nicole Cardot

312.275.0371 // nicole@baumrealty.com

GOLD COAST / MAG. MILE STATS

Dramatic storefront & signage options present an opportunity for bold branding with flagship presence.



FOR MORE INFORMATION CONTACT

Allen Joffe

312.275.3120 // allen@baumrealty.com

Doug Renner

312.275.3137 // doug.renner@baumrealty.com

Nicole Cardot

312.275.0371 // nicole@baumrealty.com



Flagship Opportunity

Establish a presence in one of the world's top 10 destinations for hospitality, dining & retail.

FLAGSHIP DESTINATION

Unique opportunity to **create a flagship retail, dining or entertainment destination**

Incredible branding opportunity with a **custom, tenant-designed storefront & bold signage**

RETAIL SPACE

7,515 SF street level retail / restaurant space available for lease with 1,948 SF 2nd floor mezzanine

±75 feet of frontage along E. Pearson Street provides **opportunity for substantial signage and outdoor seating**

Available immediately

UNMATCHED LOCATION

Just **steps west of Michigan Avenue**, adjacent to the iconic Old Watertower landmark, Loyola University Water Tower Campus

Within ½ block of the highest pedestrian counts on Michigan Avenue

FOR MORE INFORMATION CONTACT

Allen Joffe

312.275.3120 // allen@baumrealty.com

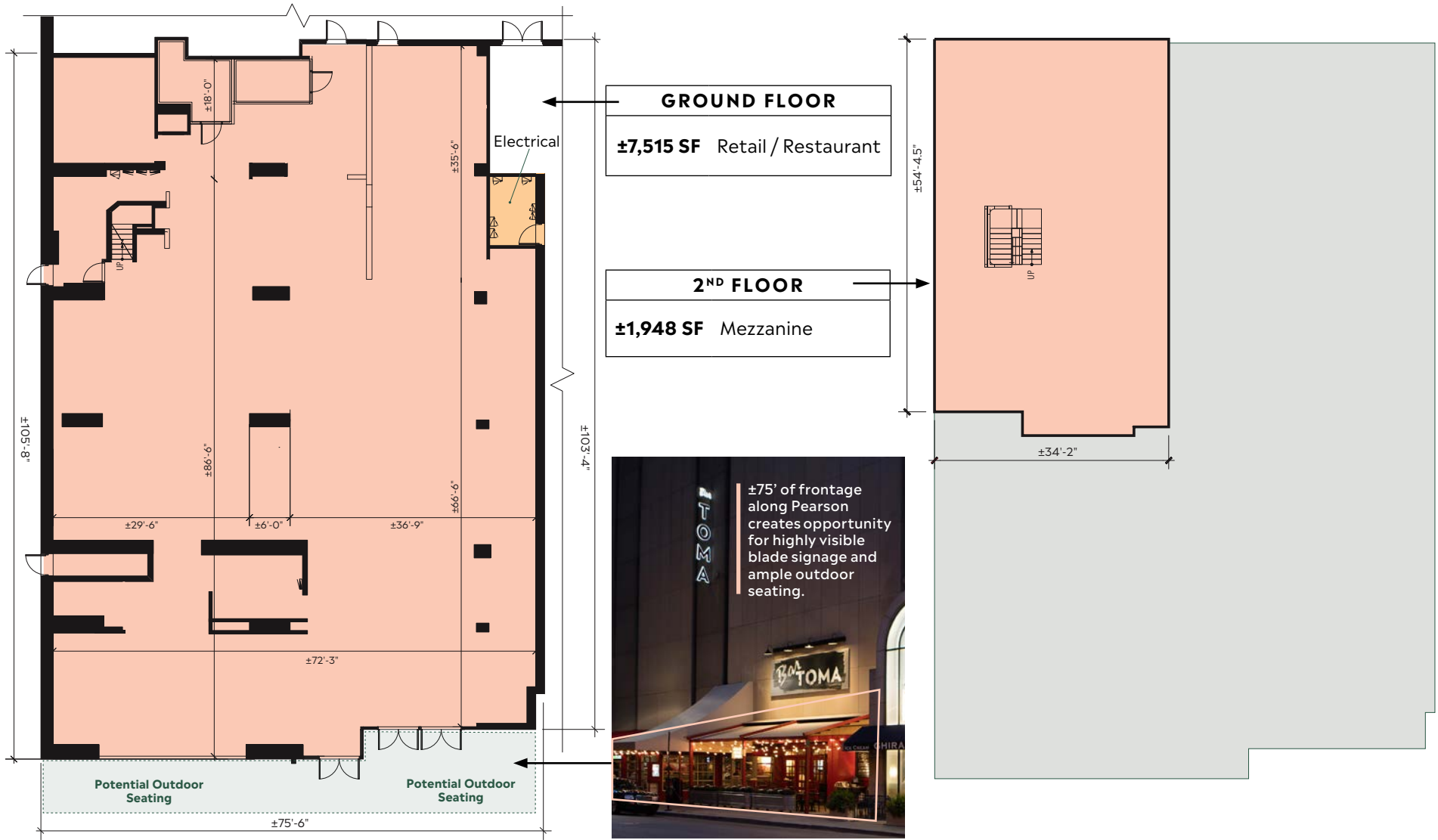
Doug Renner

312.275.3137 // doug.renner@baumrealty.com

Nicole Cardot

312.275.0371 // nicole@baumrealty.com

FLOOR PLANS



E. PEARSON STREET

FOR MORE INFORMATION CONTACT

Allen Joffe

312.275.3120 // allen@baumrealty.com

Doug Renner

312.275.3137 // doug.renner@baumrealty.com

Nicole Cardot

312.275.0371 // nicole@baumrealty.com

AREA RETAIL MAP



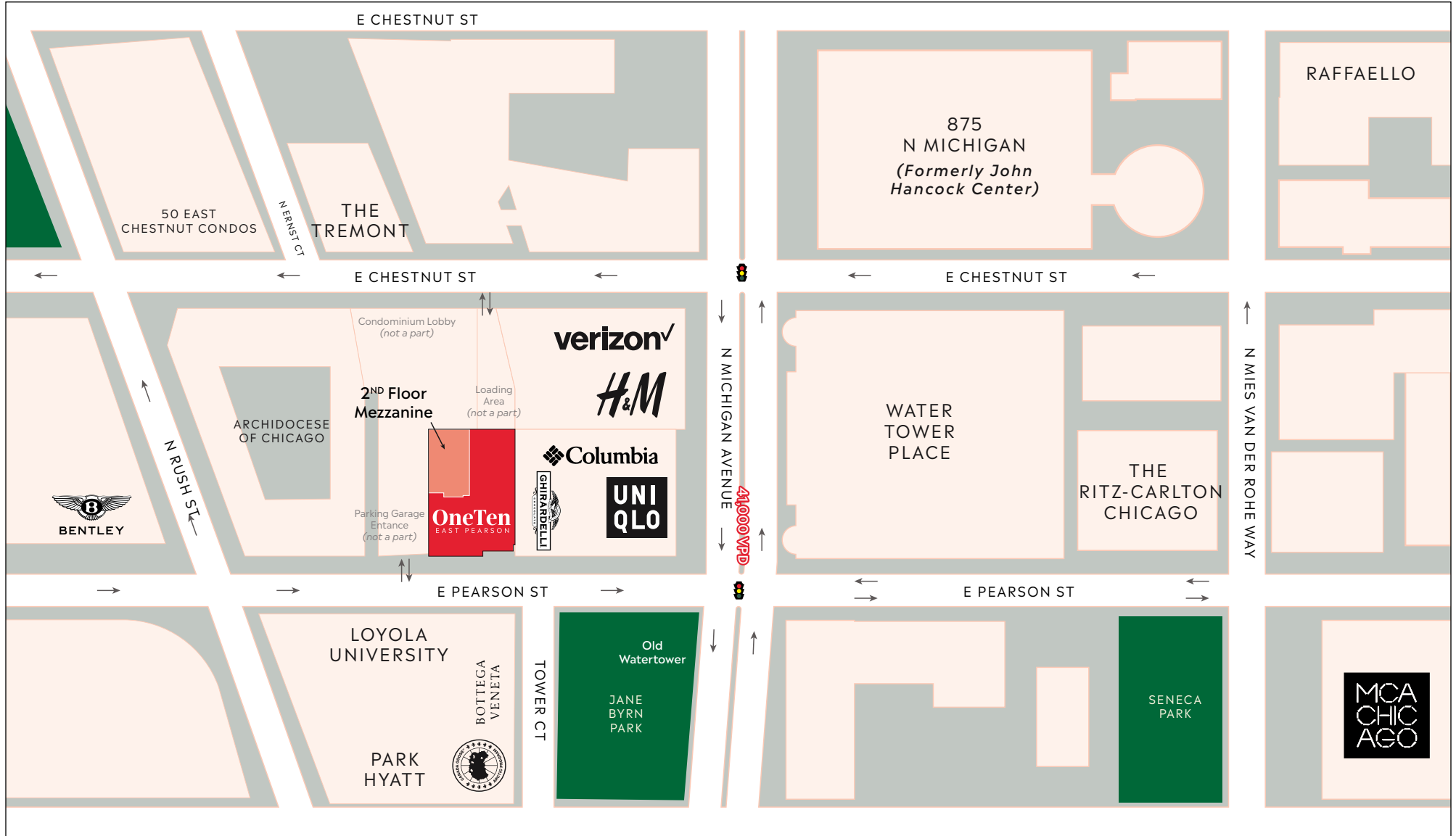
FOR MORE INFORMATION CONTACT

Allen Joffe
312.275.3120 // allen@baumrealty.com

Doug Renner
312.275.3137 // doug.renner@baumrealty.com

Nicole Cardot
312.275.0371 // nicole@baumrealty.com

SITE PLAN



FOR MORE INFORMATION CONTACT

Allen Joffe

312.275.3120 // allen@baumrealty.com

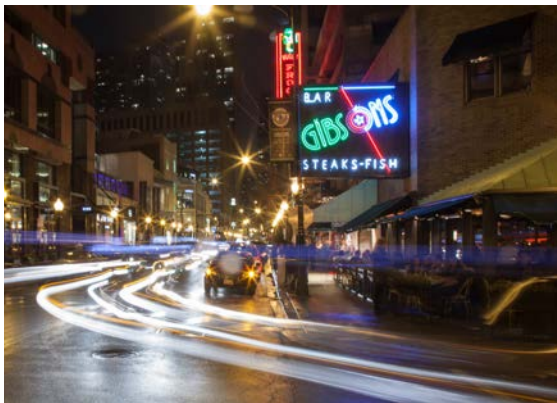
Doug Renner

312.275.3137 // doug.renner@baumrealty.com

Nicole Cardot

312.275.0371 // nicole@baumrealty.com

UNRIVALED LOCATION FOR BRANDS



GUCCI

UNI
QLO

Louis Vuitton logo
LOUIS VUITTON

TIFFANY & Co.



BAR STEAKHOUSE
GIBSON'S



ARITZIA

ZARA

Dior



MICHAEL JORDAN'S
STEAK HOUSE

lululemon
athletica

bloomingdales

Disney logo

NICO
OSTERIA

H&M

OneTen East Pearson is ideally situated just off Michigan Avenue, surrounded by luxury boutiques, national brands, world class restaurants, and award-winning hotels.

Neighboring tenants include UNIQLO, H&M, Canada Goose, lululemon, Aritzia, Nico Osteria, Tiffany, Nike, Zara, Apple, Gucci, Ghirardelli, Bloomingdale's, Gibsons Steakhouse, Burberry, Michael Jordan's Steak House and Louis Vuitton, among others.

FOR MORE INFORMATION CONTACT

Allen Joffe

312.275.3120 // allen@baumrealty.com

Doug Renner

312.275.3137 // doug.renner@baumrealty.com

Nicole Cardot

312.275.0371 // nicole@baumrealty.com

OneTen

EAST PEARSON

OWNED BY



Magnificent Mile Flagship Opportunity

GOLD COAST // CHICAGO

FOR MORE INFORMATION CONTACT

Allen Joffe

312.275.3120 // allen@baumrealty.com

Doug Renner

312.275.3137 // doug.renner@baumrealty.com

Nicole Cardot

312.275.0371 // nicole@baumrealty.com



© 2020 All information supplied is from sources deemed reliable and is furnished subject to errors, omissions, modifications, removal of the listing from sale or lease, and to any listing conditions, including the rates and manner of payment of commissions for particular offerings, the terms of which are available to principals or duly licensed brokers. This information may include estimates and projections with respect to future events, and these future events may or may not actually occur. Such estimates and projections reflect various assumptions concerning anticipated results. While we believe these assumptions are reasonable, there can be no assurance that any of these estimates and projections will prove to have been correct. Therefore, actual results may vary materially from these forward-thinking estimates and projections. Any square footage dimensions set forth are approximate.



WWW.BAUMREALTY.COM